



The IB Diploma Programme Provisional Statistical Bulletin

November 2024 Assessment Session

The IB Diploma Programme Provisional Statistical Bulletin

November 2024 Assessment Session

International Baccalaureate
IB Global Centre, Cardiff
Peterson House, Malthouse Avenue
Cardiff Gate, Cardiff, Wales
CF23 8GL
United Kingdom
Website: www.ibo.org

© International Baccalaureate Organization 2024

Provisional Data

These data tables are provisional. They are a snapshot of outcomes taken shortly before results are released to students and do not reflect changes due to Enquiry upon Results or IB investigations where schools have not responded to inquiries by issue of results. A confirmed version of this statistical release will be made available after the close of the assessment session. Whilst provisional, we do not anticipate significant changes to outcomes or entries to occur when the final bulletin is released.

Context for this statistical bulletin

For the non-examination contingency the IB used the available evidence from teachers on the student achievement; the marked coursework that the student had already completed, the predicted grade from the teacher and evidence on how these two pieces of data usually related to final grades for each school.

The IB has made every effort to ensure parity between the examination and non-examination contingency and recommend all stakeholders to treat them as equivalent. All statistics are based on the combined examination and non-examination contingency.

Number of students achieving 45 points

From the May 2023 Diploma Programme (DP) and Career-related Programme (CP) assessment session, the statistical bulletin will no longer include data on the number of students achieving 45 points. The IB has made this decision because it values the importance of focusing on the achievements of all students—we are equally proud of all our IB students and the accomplishments they achieved during their two-year DP or CP journey. By presenting the proportion of points in bands of 5, we believe that there is sufficient information for interested parties to understand our standards.

If you have feedback on this statistical bulletin please email: support@ibo.org

Key to abbreviations and terminology

Programmes

DP: Diploma Programme

Categories of registration

DP Diploma qualification students must register in one of three categories:

Diploma: Students intending to complete the requirements for the award of an DP Diploma.

Retake: Previous DP Diploma students who are seeking to improve their results by retaking one or more subjects. The highest grade obtained for a subject will contribute towards the DP Diploma.

Anticipated: Students intending to complete the requirements for one or two standard level subjects (excluding languages ab initio and pilot subjects) at the end of their first year of the Diploma Programme. They must complete all remaining DP Diploma requirements in the corresponding examination session the following year.

Course: Students taking one or more subjects who are not seeking the award of the DP Diploma.

Results

DP Diploma Results: Data includes all Diploma and Retake category students whether they were awarded the diploma or not. Unless otherwise stated.

IB Regions

Schools authorized to offer the IB Diploma Programme are grouped by geographical regions. The abbreviations used in the tables are the codes describing the following geographical regions:

IBA: IB Americas

IBAEM: IB Africa, Europe, Middle East

IBAP: IB Asia-Pacific

Other Abbreviations

HL: Higher Level

SL: Standard Level

Session overview

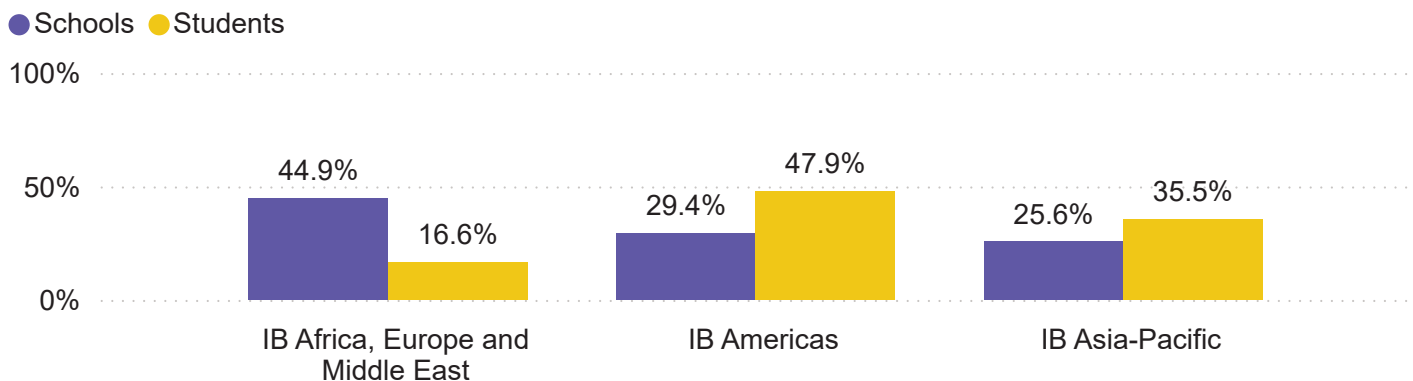
Number of students	Number of student subjects	Number of subjects	Number of countries	Number of schools
21,806	97,549	79	125	1,427

Mean grade	Number of first languages	Number of first nationalities
4.6	107	160

DP diploma results

Pass rate	Mean grade	Mean total points
72.7%	4.6	29.2

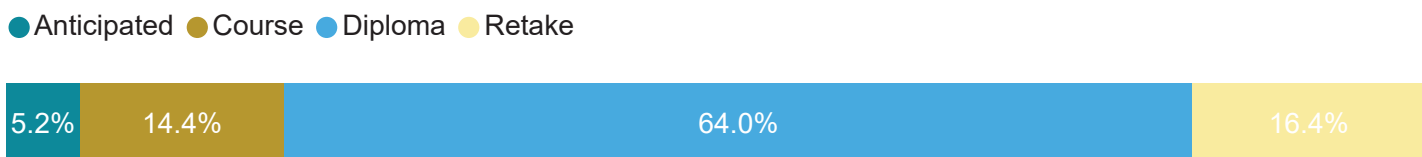
Distribution of schools and students by region



Distribution of students by gender



Distribution of students by category

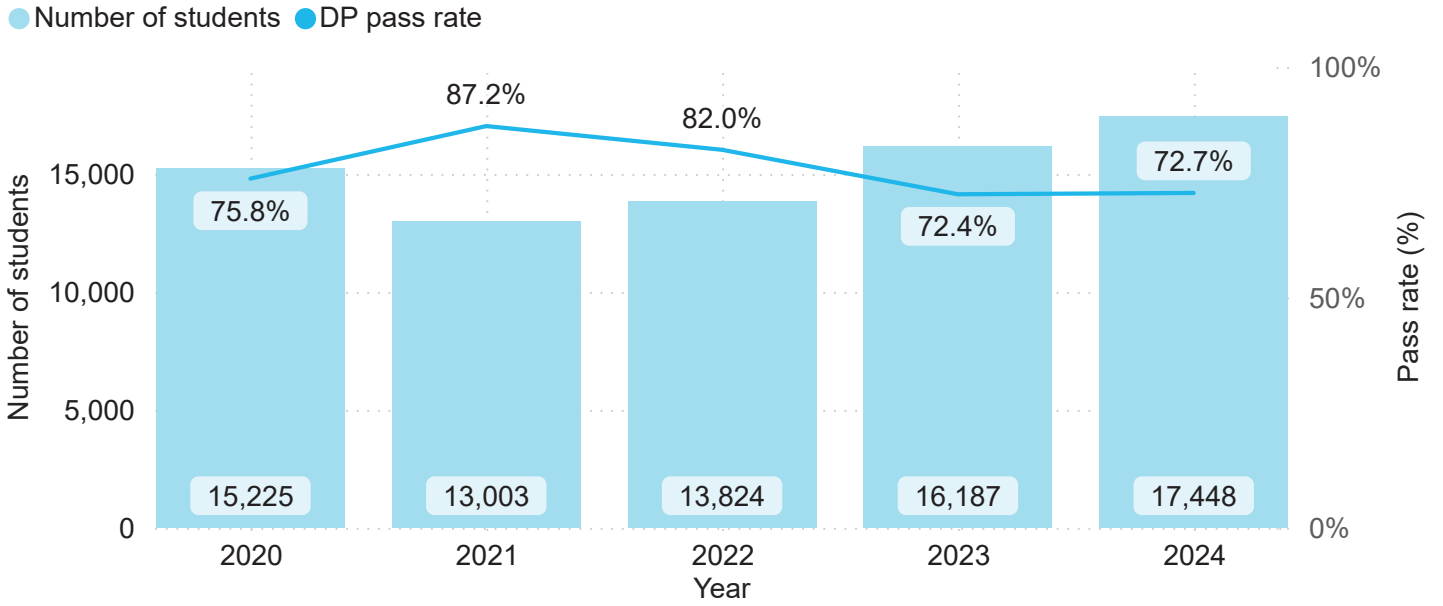


Distribution of schools by legal status

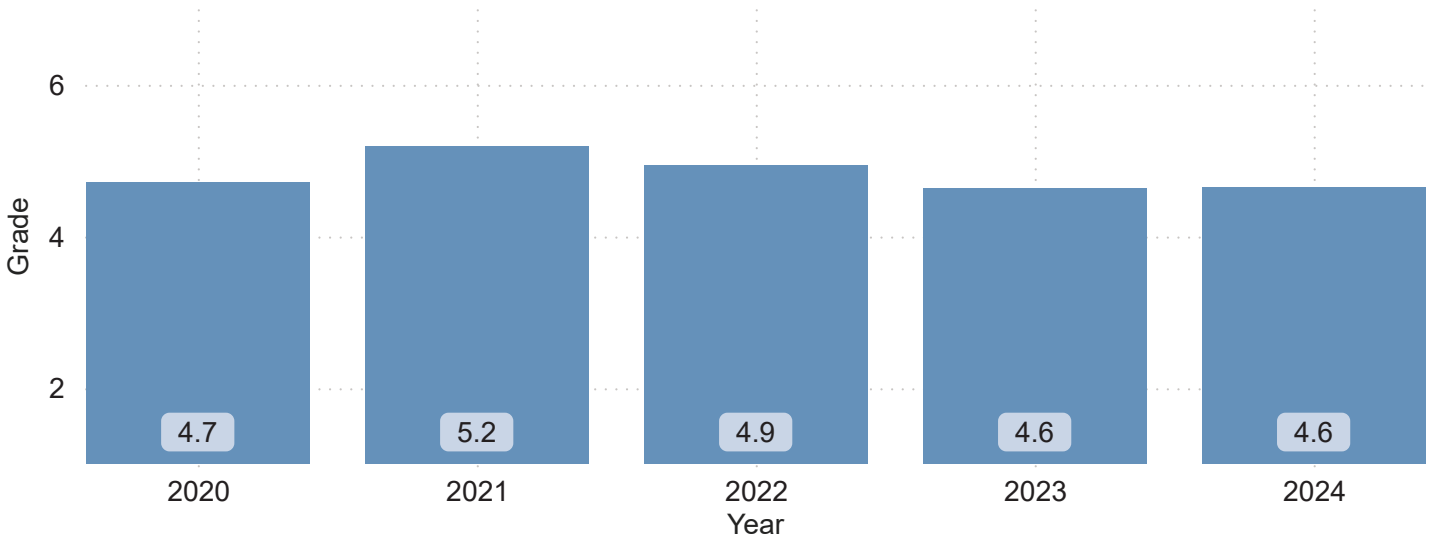


DP diploma results

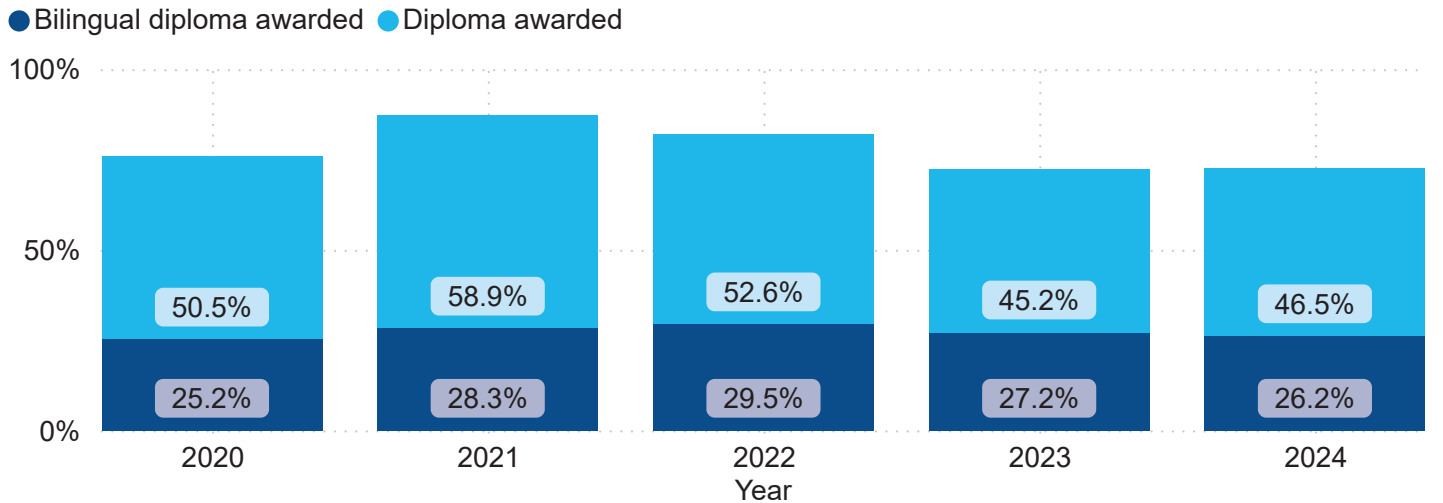
Number of students and pass rate



Mean Grade

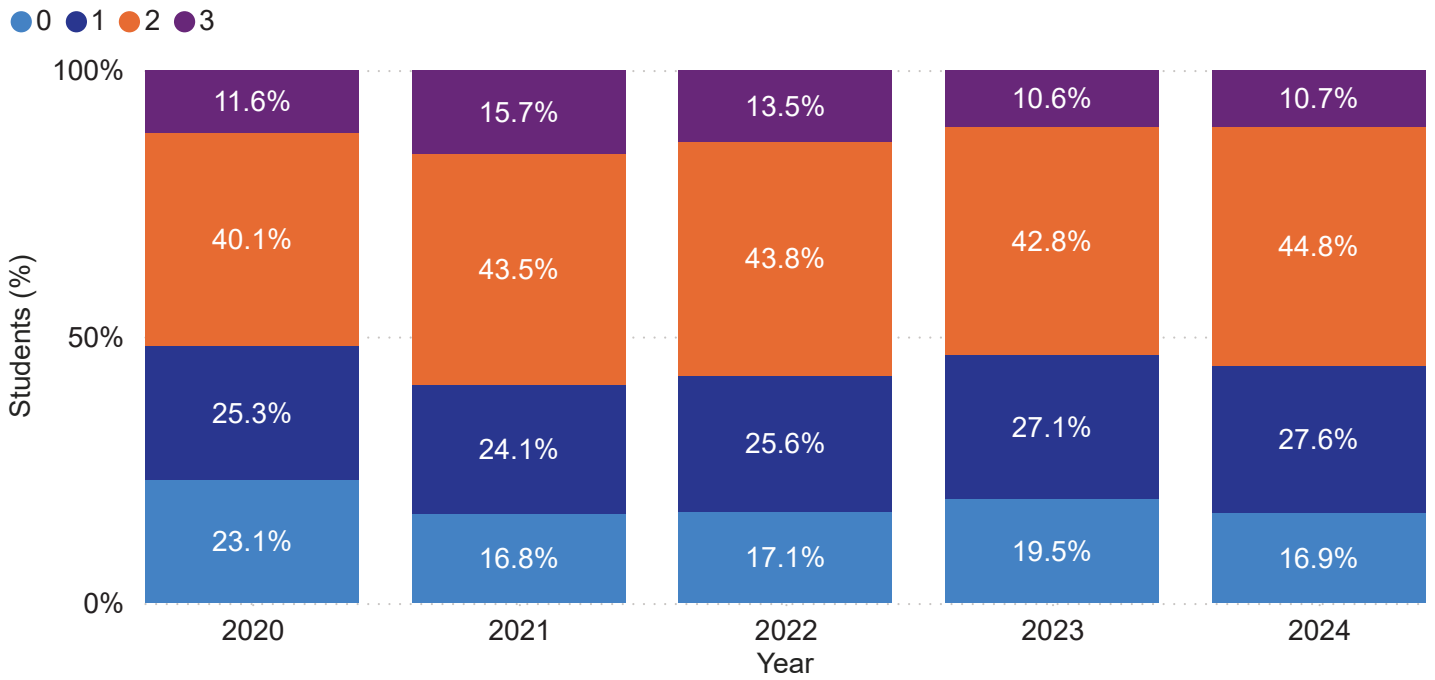


Percentage of Diplomas Awarded

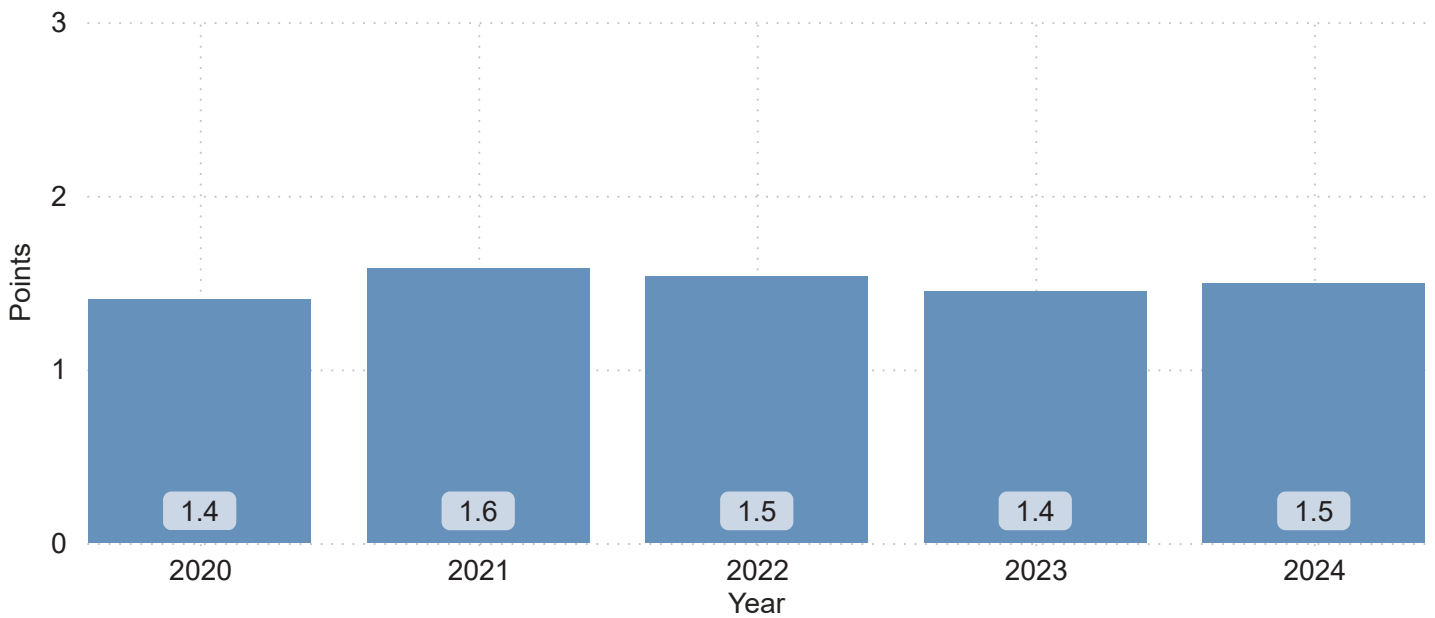


DP diploma results - core points

Distribution of core points

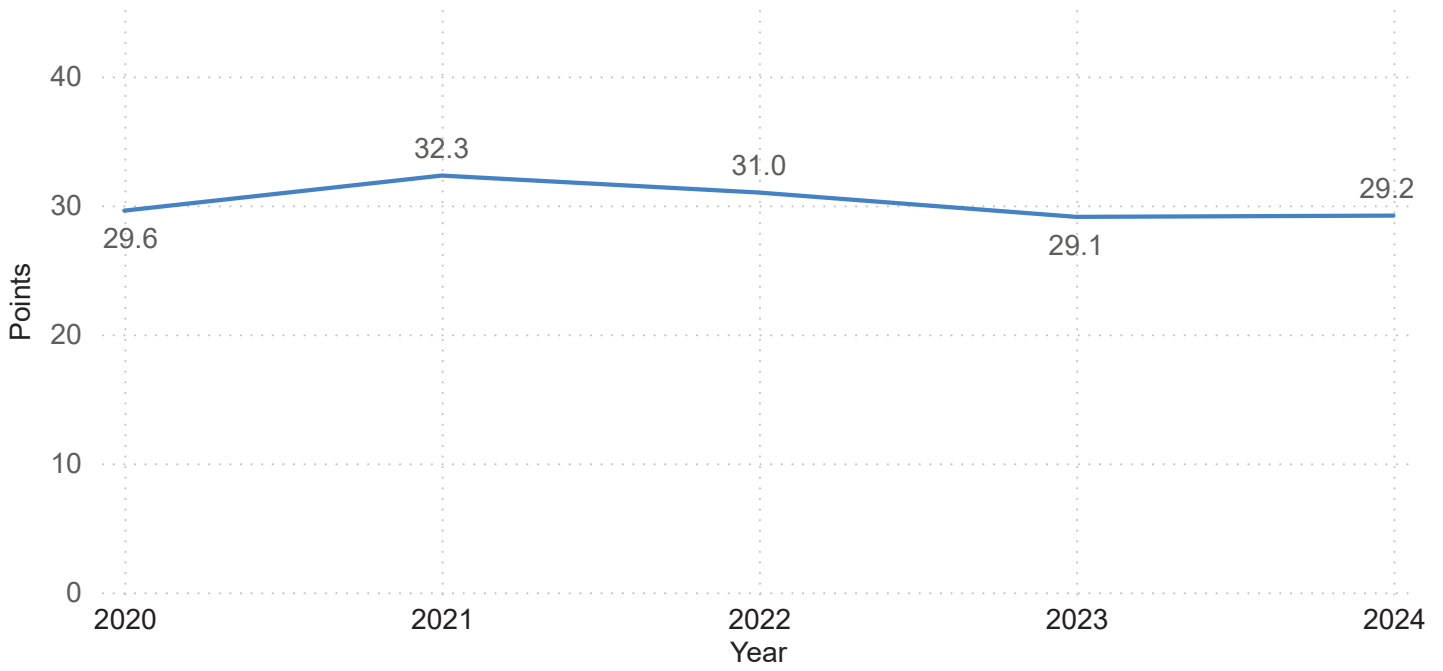


Mean core points

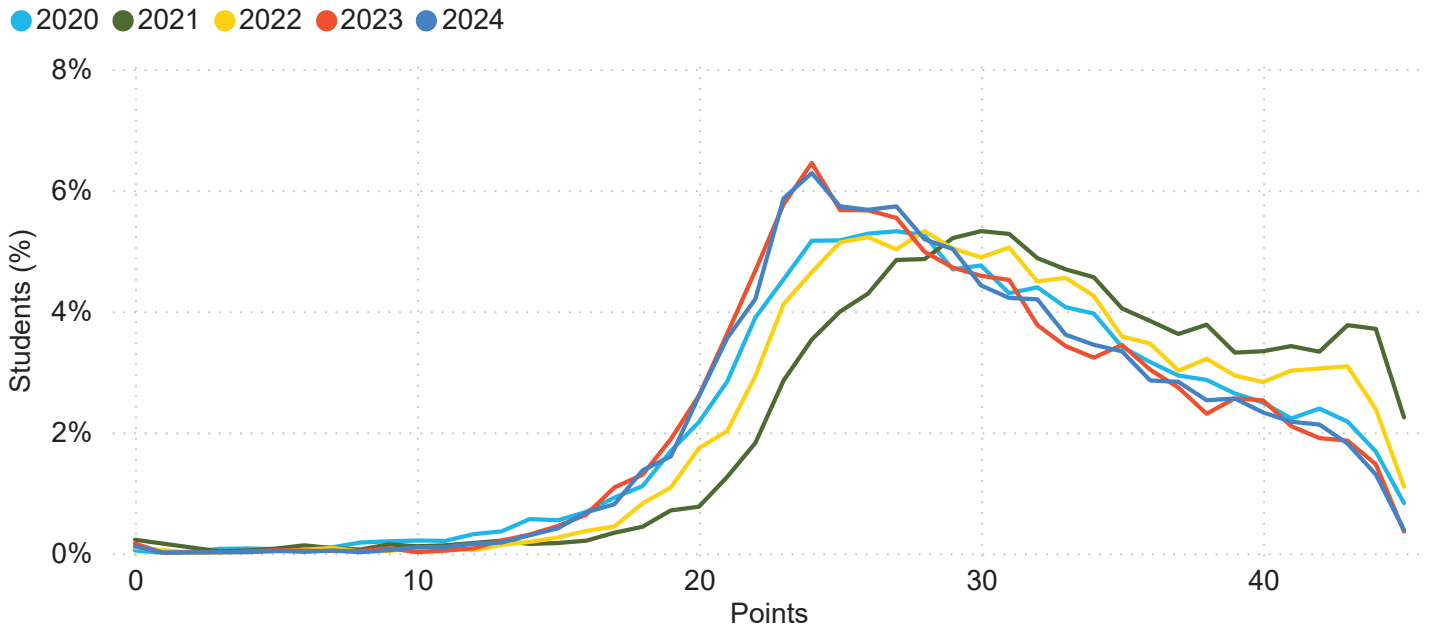


DP diploma results - total points

Mean Total Points



Total points distribution



Grouped total points distribution

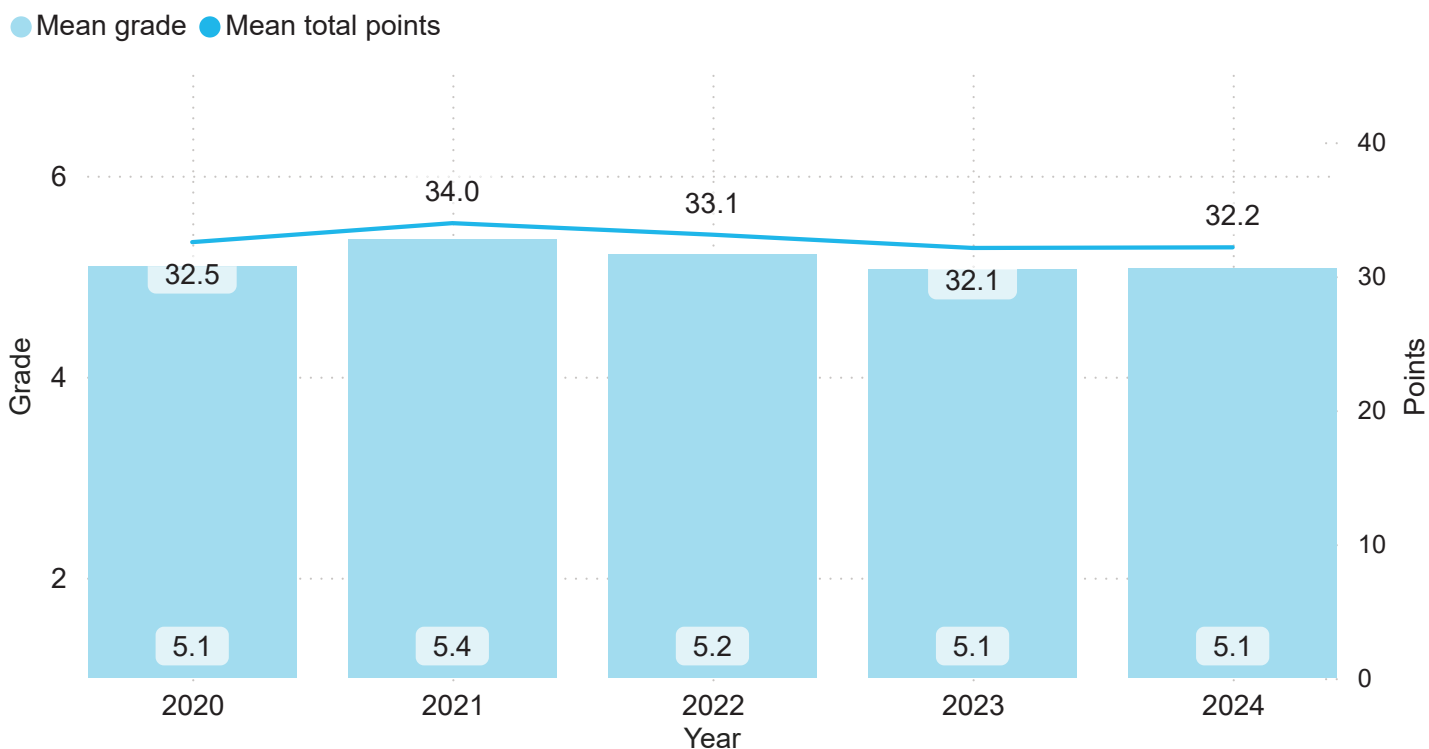
Points	2020	2021	2022	2023	2024
0 - 23	20.9%	10.1%	14.7%	23.2%	22.2%
24 - 29	30.9%	26.7%	30.4%	33.0%	33.6%
30 - 34	21.5%	24.7%	23.2%	19.5%	19.9%
35 - 39	15.0%	18.6%	16.2%	14.1%	14.1%
40 - 45	11.8%	19.8%	15.5%	10.2%	10.1%

DP diploma results - students distributed by number of points

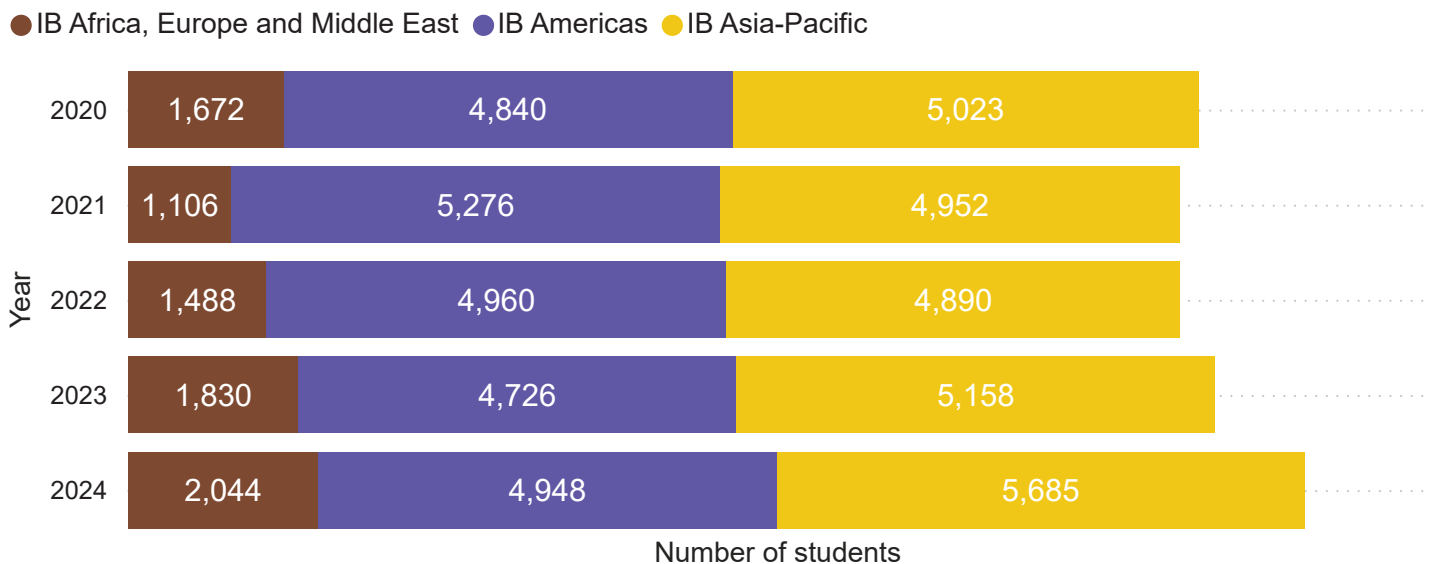
Result Points	Diploma awarded		Diploma not awarded	
	Number of students	Percentage of students	Number of students	Percentage of students
0 - 10			76	1.6%
11 - 19			977	20.5%
20 - 23			2,829	59.3%
24 - 29	4,995	39.4%	873	18.3%
30 - 34	3,456	27.3%	15	0.3%
35 - 39	2,460	19.4%	<10	
40 - 45	1,766	13.9%		
Total	12,677	100.0%	4,771	100.0%

DP diploma results - diploma awarded students only

Mean grade and mean total points of students awarded the diploma



Number of Diplomas Awarded by Region



DP diploma results - year on year growth

Year	Number of schools	Schools % change	Number of students	Students % change	Average number of students per school	Number of diploma 2nd year students	Average number of diploma 2nd year students per school
2020	1,170		19,623		16.8	15,225	13.2
2021	916	-21.7%	16,814	-14.3%	18.4	13,003	14.4
2022	1,124	22.7%	18,068	7.5%	16.1	13,824	12.5
2023	1,340	19.2%	20,266	12.2%	15.1	16,187	12.4
2024	1,427	6.5%	21,806	7.6%	15.3	17,448	12.4

DP extended essay

Grade distribution by subject group

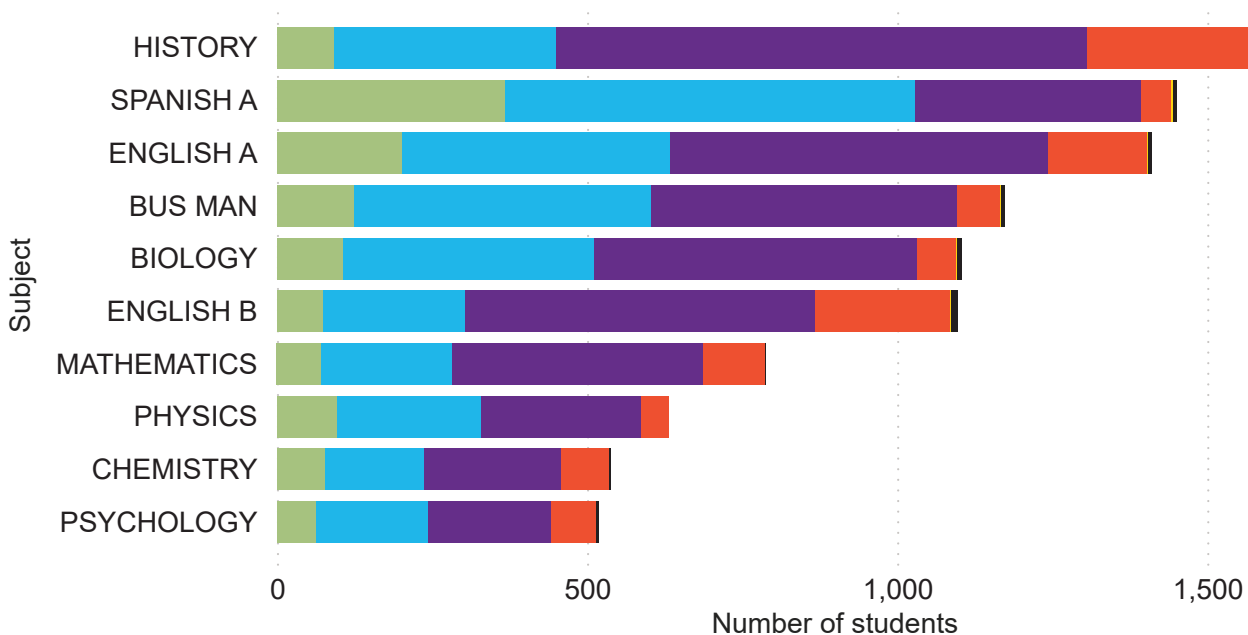
Result	Grade awarded						No grade awarded	Total	
	A	B	C	D	E	Total			
Subject group	A	B	C	D	E	Total	N	Total	
STUDIES IN LANGUAGE AND LITERATURE	650	1,234	1,138	248	6	3,276	12	12	3,288
LANGUAGE ACQUISITION	142	318	611	229	2	1,302	10	10	1,312
INDIVIDUALS AND SOCIETIES	520	1,545	2,296	784	14	5,159	41	41	5,200
SCIENCES	347	926	1,159	249	12	2,693	10	10	2,703
MATHEMATICS	71	212	404	101		788	1	1	789
THE ARTS	195	238	350	105	7	895	4	4	899
INTERDISCIPLINARY	34	61	120	76	4	295	2	2	297
Total	1,959	4,534	6,078	1,792	45	14,408	80	80	14,488

Grade distribution percentage by subject group

Result	Grade awarded						No grade awarded	Total	
	A	B	C	D	E	Total			
Subject group	A	B	C	D	E	Total	N	Total	
STUDIES IN LANGUAGE AND LITERATURE	19.8%	37.5%	34.6%	7.5%	0.2%	99.6%	0.4%	0.4%	100.0%
LANGUAGE ACQUISITION	10.8%	24.2%	46.6%	17.5%	0.2%	99.2%	0.8%	0.8%	100.0%
INDIVIDUALS AND SOCIETIES	10.0%	29.7%	44.2%	15.1%	0.3%	99.2%	0.8%	0.8%	100.0%
SCIENCES	12.8%	34.3%	42.9%	9.2%	0.4%	99.6%	0.4%	0.4%	100.0%
MATHEMATICS	9.0%	26.9%	51.2%	12.8%		99.9%	0.1%	0.1%	100.0%
THE ARTS	21.7%	26.5%	38.9%	11.7%	0.8%	99.6%	0.4%	0.4%	100.0%
INTERDISCIPLINARY	11.4%	20.5%	40.4%	25.6%	1.3%	99.3%	0.7%	0.7%	100.0%
Total	13.5%	31.3%	42.0%	12.4%	0.3%	99.4%	0.6%	0.6%	100.0%

Top 10 extended essay subjects

● A ● B ● C ● D ● E ● N



DP theory of knowledge

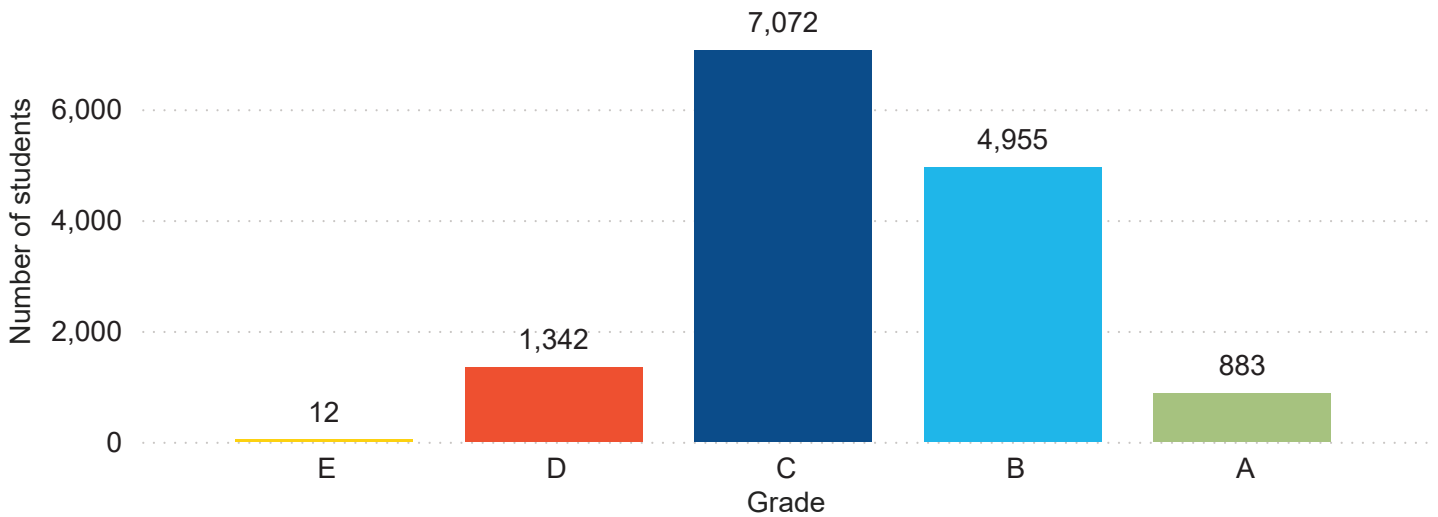
Grade distribution

Result	Grade awarded						Total	No grade awarded		Total
	A	B	C	D	E	Total		N	Total	
THEORY KNOWL.	883	4,955	7,072	1,342	12	14,264	88	88	14,352	

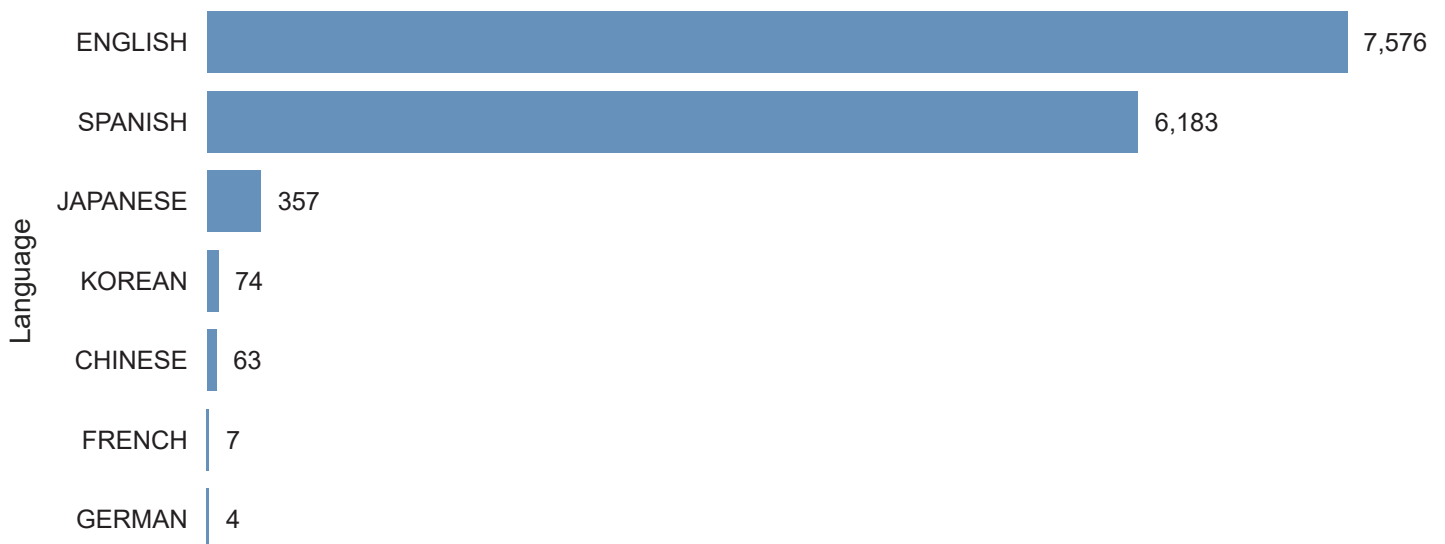
Grade distribution percentage

Result	Grade awarded						Total	No grade awarded		Total
	A	B	C	D	E	Total		N	Total	
THEORY KNOWL.	6.2%	34.5%	49.3%	9.4%	0.1%	99.4%	0.6%	0.6%	100.0%	

Grade Distribution



Number of students by language



Number of students

Subjects

Subjects with fewer than 10 students are excluded from these lists

Grade distribution by subject group

Subject group	Students	Mean grade	%N	%1	%2	%3	%4	%5	%6	%7
STUDIES IN LANGUAGE AND LITERATURE	17,570	4.9	1.0	0.0	0.4	5.6	27.7	39.8	22.5	3.0
LANGUAGE ACQUISITION	15,869	5.2	0.8		0.9	9.2	16.9	26.2	31.3	14.7
INDIVIDUALS AND SOCIETIES	21,274	4.7	1.2	0.3	3.9	13.5	28.0	25.6	19.3	8.2
SCIENCES	20,517	4.4	1.7	1.0	11.6	23.7	18.8	15.0	14.9	13.3
MATHEMATICS	16,163	4.1	1.6	2.5	16.8	20.7	21.8	15.0	13.1	8.6
THE ARTS	3,546	4.6	1.2	0.0	0.9	15.4	35.0	24.8	15.7	7.0
INTERDISCIPLINARY	2,548	4.0	1.7	0.5	11.4	26.5	25.7	21.1	9.7	3.5
Total	97,487	4.6	1.3	0.7	6.6	15.1	23.4	24.1	19.5	9.3

Studies in Language and Literature grade distribution

Subject	Students	Mean grade	%N	%1	%2	%3	%4	%5	%6	%7
AFRIKAANS A: LITERATURE SL	14	5.1				7.1	21.4	35.7	28.6	7.1
CHINESE A: LANGUAGE AND LITERATURE HL	41	5.2					14.6	51.2	34.1	
CHINESE A: LANGUAGE AND LITERATURE SL	136	5.3	0.7				16.2	41.2	36.8	5.1
CHINESE A: LITERATURE SL	39	5.5					7.7	43.6	43.6	5.1
ENGLISH A: LANGUAGE AND LITERATURE HL	3,280	4.9	1.3	0.0	0.2	4.7	28.3	36.9	24.1	4.5
ENGLISH A: LANGUAGE AND LITERATURE SL	2,567	5.1	1.2		0.4	4.7	20.4	39.5	30.2	3.7
ENGLISH A: LITERATURE HL	979	5.2	0.9			2.2	19.9	40.4	33.4	3.1
ENGLISH A: LITERATURE SL	481	5.0	0.4	0.2	0.2	5.6	24.7	36.2	28.1	4.6
FRENCH A: LANGUAGE AND LITERATURE HL	36	4.0				41.7	36.1	11.1	5.6	5.6
FRENCH A: LANGUAGE AND LITERATURE SL	76	4.6	1.3		2.6	14.5	31.6	25.0	19.7	5.3
FRENCH A: LITERATURE HL	20	4.3					75.0	20.0	5.0	
FRENCH A: LITERATURE SL	22	5.3					9.1	54.5	31.8	4.5
GERMAN A: LANGUAGE AND LITERATURE HL	19	5.0	5.3			10.5	10.5	42.1	31.6	
GERMAN A: LANGUAGE AND LITERATURE SL	20	4.5	5.0		5.0	20.0	25.0	20.0	20.0	5.0
GERMAN A: LITERATURE HL	10	4.5	20.0				50.0	20.0	10.0	
GERMAN A: LITERATURE SL	15	5.0				6.7	26.7	33.3	26.7	6.7
JAPANESE A: LANGUAGE AND LITERATURE HL	153	5.1				2.6	20.3	47.7	22.9	6.5
JAPANESE A: LANGUAGE AND LITERATURE SL	116	5.2				3.4	20.7	40.5	24.1	11.2
JAPANESE A: LITERATURE HL	165	5.0	1.2			1.8	29.7	40.6	23.0	3.6
JAPANESE A: LITERATURE SL	111	4.8			1.8	7.2	21.6	51.4	16.2	1.8
KOREAN A: LANGUAGE AND LITERATURE HL	83	4.9	1.2			4.8	25.3	42.2	24.1	2.4
KOREAN A: LANGUAGE AND LITERATURE SL	25	5.1	4.0			8.0	20.0	32.0	28.0	8.0
KOREAN A: LITERATURE SL	66	5.7					4.5	31.8	56.1	7.6
PORTUGUESE A: LANGUAGE AND LITERATURE HL	142	5.1	0.7			7.0	19.0	36.6	32.4	4.2
PORTUGUESE A: LANGUAGE AND LITERATURE SL	51	5.3			2.0	2.0	5.9	49.0	33.3	7.8
PORTUGUESE A: LITERATURE HL	26	5.4	3.8				15.4	38.5	30.8	11.5
SPANISH A: LANGUAGE AND LITERATURE HL	4,895	4.7	0.8		0.3	4.9	33.5	42.2	17.5	0.9
SPANISH A: LANGUAGE AND LITERATURE SL	280	4.9	0.7		0.4	10.0	20.4	40.4	23.2	5.0
SPANISH A: LITERATURE HL	2,778	4.6	0.8	0.0	0.8	8.9	32.5	41.1	14.9	0.9
SPANISH A: LITERATURE SL	294	4.7	1.0	0.3	1.0	12.6	21.1	42.9	19.4	1.7
TURKISH A: LITERATURE HL	238	5.0	0.8			8.8	25.6	29.0	24.4	11.3
TURKISH A: LITERATURE SL	365	5.1	2.2		0.8	6.0	21.6	34.2	21.4	13.7

Language acquisition - Classical languages grade distribution

Subject	Students	Mean grade	%N	%1	%2	%3	%4	%5	%6	%7
LATIN HL	21	5.9					14.3	19.0	28.6	38.1
LATIN SL	66	5.4			1.5	9.1	16.7	19.7	27.3	25.8

Language acquisition - Language ab initio grade distribution

Subject	Students	Mean grade	%N	%1	%2	%3	%4	%5	%6	%7
ENGLISH AB. SL	49	4.4			12.2	24.5	10.2	30.6	12.2	10.2
FRENCH AB. SL	809	4.9	1.0		1.6	13.6	23.1	28.1	20.8	11.9
INDONESIAN AB SL	139	5.2				10.1	18.7	27.3	28.8	15.1
JAPANESE AB. SL	128	5.5				3.9	21.1	19.5	29.7	25.8
MANDARIN AB. SL	191	6.0	0.5			2.6	7.3	22.0	23.0	44.5
SPANISH AB. SL	1,147	5.2	0.9		0.6	4.3	20.6	31.4	29.7	12.6

Language acquisition - Language B grade distribution

Subject	Students	Mean grade	%N	%1	%2	%3	%4	%5	%6	%7
CHINESE B HL	151	6.5				0.7	1.3	6.6	29.8	61.6
CHINESE B SL	1,386	6.4	0.3			0.6	2.7	9.9	25.0	61.5
ENGLISH B HL	7,950	5.0	0.8		1.1	11.9	19.1	27.1	34.1	5.9
ENGLISH B SL	1,380	5.1	1.2		1.4	9.7	17.6	29.9	34.0	6.3
FRENCH B HL	182	5.3	1.6		0.5	9.9	12.6	24.7	35.7	14.8
FRENCH B SL	797	5.3	0.8		0.3	4.8	15.4	34.1	30.4	14.3
GERMAN B HL	571	5.1	0.7		0.5	10.5	16.5	32.6	30.8	8.4
GERMAN B SL	148	5.2	2.0		0.7	8.8	23.0	23.0	23.6	18.9
INDONESIAN B SL	24	5.3				4.2	8.3	50.0	25.0	12.5
JAPANESE B HL	31	5.9				12.9	12.9	3.2	12.9	58.1
JAPANESE B SL	174	5.5				3.4	14.4	34.5	24.7	23.0
MALAY B SL	126	5.4				4.0	23.0	24.6	24.6	23.8
SPANISH B HL	78	5.9	1.3			5.1	5.1	14.1	47.4	26.9
SPANISH B SL	183	5.5	2.7		0.5	4.4	14.2	26.8	30.6	20.8
TAMIL B SL	134	6.1	0.7			1.5	6.0	14.9	32.8	44.0

Individuals and societies grade distribution

Subject	Students	Mean grade	%N	%1	%2	%3	%4	%5	%6	%7
BRAZILIAN SOCIAL STUDIES SL	74	5.2	1.4			8.1	20.3	31.1	27.0	12.2
BUS MAN HL	3,402	4.8	1.3	0.3	2.5	14.0	25.2	24.9	22.2	9.7
BUS MAN SL	2,145	4.4	0.6	0.1	3.7	18.2	33.7	24.5	12.8	6.4
DIGITAL SOC. HL	754	4.5	1.1	0.4	1.5	15.0	29.8	41.5	9.8	0.9
DIGITAL SOC. SL	818	4.4	0.4		0.4	14.9	41.8	33.5	8.8	0.2
ECONOMICS HL	2,089	5.3	2.2	0.1	3.0	7.9	17.0	20.8	29.4	19.6
ECONOMICS SL	1,143	5.2	2.2	0.3	5.9	8.5	13.7	19.9	31.8	17.7
GEOGRAPHY HL	663	5.3	2.3		1.4	7.5	14.3	28.7	30.9	14.9
GEOGRAPHY SL	303	5.1	0.3	0.3	5.6	7.9	17.5	26.1	24.8	17.5
GLOB. POL HL	699	5.0	1.1		0.4	5.9	25.9	36.3	23.6	6.7
GLOB. POL SL	389	4.6	1.8		2.6	10.8	26.7	42.2	12.9	3.1
HISTORY HL	4,727	4.1	1.0	0.3	6.3	19.3	40.7	21.3	9.0	2.2
HISTORY SL	1,788	4.3	0.7	1.1	8.0	14.6	31.2	25.4	15.5	3.6
PHILOSOPHY HL	186	5.0			1.1	7.5	25.3	35.5	22.6	8.1
PHILOSOPHY SL	215	5.1	0.9			5.1	23.3	38.1	25.1	7.4
PSYCHOLOGY HL	1,298	5.3	1.9	0.1	0.7	6.7	12.9	28.7	35.7	13.3
PSYCHOLOGY SL	460	5.0	1.5	0.2	2.4	11.3	20.0	23.9	30.2	10.4
SOC.CUL.ANTH. HL	84	4.4	1.2	1.2	23.8	10.7	11.9	11.9	25.0	14.3
SOC.CUL.ANTH. SL	37	4.6		2.7	8.1	16.2	18.9	18.9	18.9	16.2

Sciences grade distribution

Subject	Students	Mean grade	%N	%1	%2	%3	%4	%5	%6	%7
BIOLOGY HL	3,448	4.6	2.5	0.6	5.9	18.3	22.9	17.8	20.1	11.9
BIOLOGY SL	4,695	3.8	1.0	0.4	12.3	33.6	24.8	14.6	9.8	3.4
CHEMISTRY HL	2,854	5.3	2.2	0.2	5.1	12.7	13.1	15.3	21.8	29.4
CHEMISTRY SL	3,042	4.0	1.0	3.1	19.5	24.3	15.7	12.6	12.3	11.5
COMPUTER SC. HL	391	4.4	3.6	0.5	11.0	24.3	17.9	14.3	12.8	15.6
COMPUTER SC. SL	349	3.4	3.2	2.6	25.8	33.2	16.6	9.5	6.0	3.2
DESIGN TECH. HL	203	4.5	2.0		3.0	17.7	27.1	30.5	16.3	3.4
DESIGN TECH. SL	143	4.0	2.1	0.7	13.3	22.4	25.2	23.1	11.9	1.4
PHYSICS HL	2,213	5.0	2.4	0.3	6.1	18.4	13.8	14.5	17.7	26.9
PHYSICS SL	2,090	3.7	1.8	1.4	24.7	30.4	13.3	10.0	9.8	8.6
SPORTS EX SCI HL	410	5.5	0.7		0.5	3.7	11.5	34.1	25.1	24.4
SPORTS EX SCI SL	676	4.0	1.2	0.6	5.6	30.8	31.2	15.2	12.7	2.7

Mathematics grade distribution

Subject	Students	Mean grade	%N	%1	%2	%3	%4	%5	%6	%7
MATH ANALYSIS HL	3,080	5.1	1.9	0.7	6.0	11.1	17.6	17.4	22.3	23.0
MATH ANALYSIS SL	7,505	3.9	1.1	1.7	20.3	20.5	22.9	14.3	12.0	7.2
MATH APPS HL	589	4.0	2.9	1.7	16.6	21.4	20.5	18.0	14.1	4.8
MATH APPS SL	4,989	3.6	1.9	4.9	18.1	26.8	22.8	14.4	9.0	2.2

The arts grade distribution

Subject	Students	Mean grade	%N	%1	%2	%3	%4	%5	%6	%7
DANCE HL	60	6.3				1.7	3.3	15.0	23.3	56.7
DANCE SL	24	4.4				16.7	37.5	33.3	12.5	
FILM HL	249	5.3	0.8	0.4	0.4	3.2	22.1	23.3	38.2	11.6
FILM SL	78	4.6	2.6			11.5	38.5	34.6	7.7	5.1
MUSIC HL	260	5.4	1.2		0.4	4.2	11.9	39.2	28.1	15.0
MUSIC SL	141	4.6	4.3			17.0	36.2	17.0	16.3	9.2
THEATRE HL	272	5.8				1.5	9.6	23.9	37.5	27.6
THEATRE SL	224	4.6	1.3		0.4	12.1	37.9	26.8	17.0	4.5
VISUAL ARTS HL	995	4.4	1.0		1.2	24.3	32.8	22.3	14.9	3.5
VISUAL ARTS SL	1,237	4.1	1.5		1.4	17.5	50.6	24.4	4.2	0.5

Interdisciplinary grade distribution

Subject	Students	Mean grade	%N	%1	%2	%3	%4	%5	%6	%7
ENVIRONMENTAL SYSTEMS AND SOCIETIES SL	2,527	4.0	1.7	0.6	11.5	26.7	25.8	20.9	9.4	3.4
LIT AND PERF SL	21	5.5	4.8				4.8	42.9	42.9	4.8

Subjects with fewer than 10 students

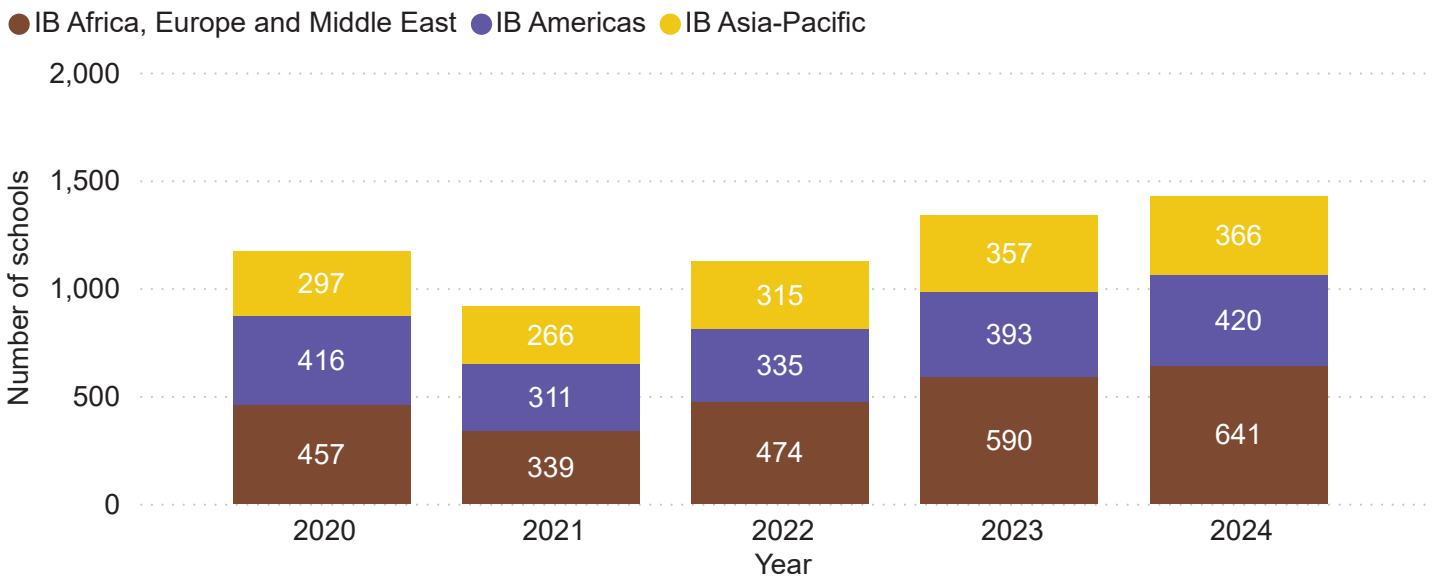
Subject	Subject group
CHINESE A: LITERATURE HL	STUDIES IN LANGUAGE AND LITERATURE
INDONESIAN A: LITERATURE HL	STUDIES IN LANGUAGE AND LITERATURE
INDONESIAN A: LITERATURE SL	STUDIES IN LANGUAGE AND LITERATURE
KOREAN A: LITERATURE HL	STUDIES IN LANGUAGE AND LITERATURE
PORTUGUESE A: LITERATURE SL	STUDIES IN LANGUAGE AND LITERATURE
SISWATI A: LITERATURE HL	STUDIES IN LANGUAGE AND LITERATURE
SISWATI A: LITERATURE SL	STUDIES IN LANGUAGE AND LITERATURE
INDONESIAN B HL	LANGUAGE ACQUISITION
NOS SL	SCIENCES
LITERARY ARTS SL	THE ARTS

Schools

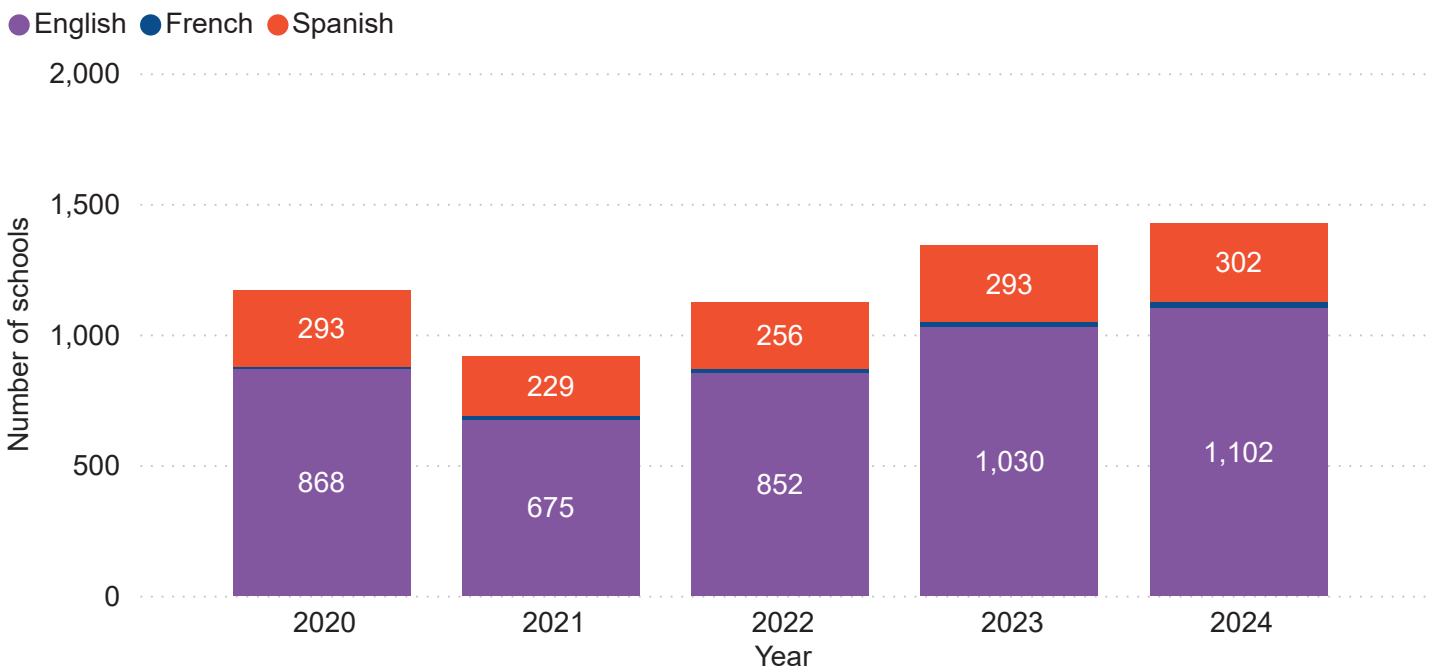
Number of schools by cohort size

Number of students	2020	2021	2022	2023	2024
<= 10	758	586	768	949	1,008
11 - 20	159	102	122	126	139
21 - 40	129	102	107	130	125
41 - 60	39	52	46	49	65
61 - 80	27	29	26	34	39
81 - 100	40	27	37	30	25
101 - 200	12	11	11	15	18
> 200	6	7	7	7	8
Total	1,170	916	1,124	1,340	1,427

Number of schools by region



Number of schools by working language



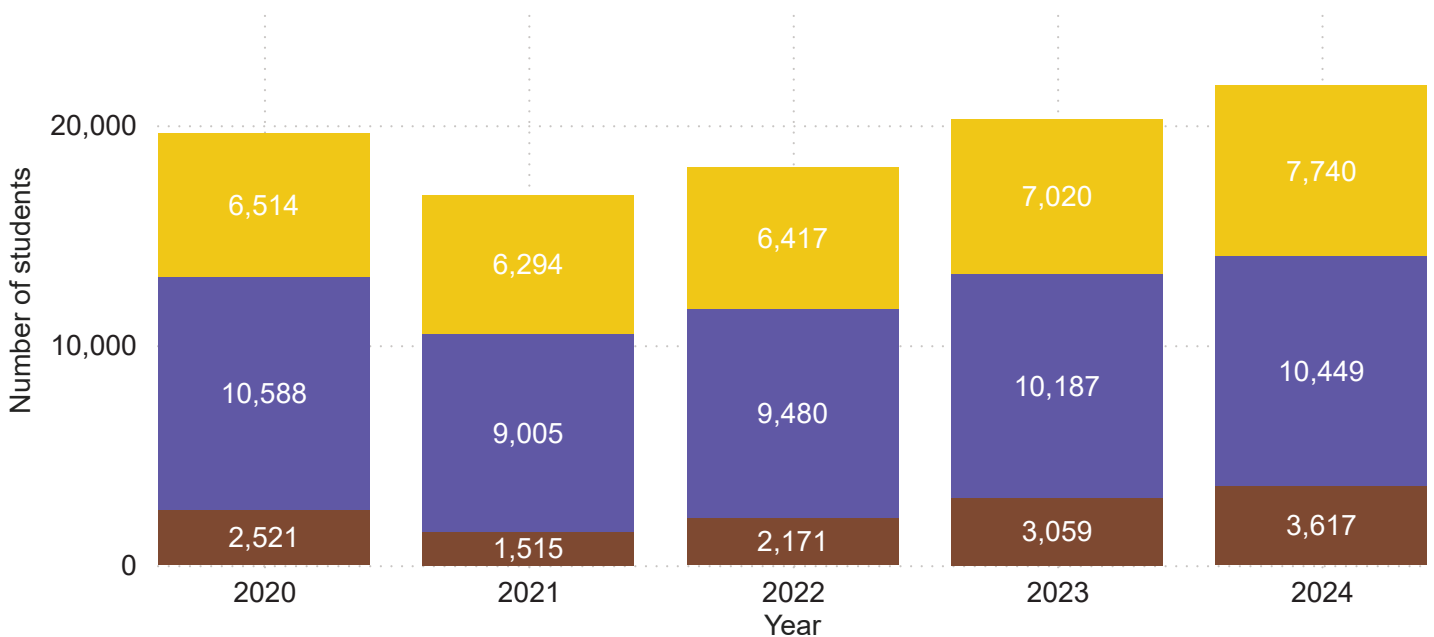
Students

Number of students by category

Categories of registration	2020	2021	2022	2023	2024
Course	3,010	2,923	3,364	3,115	3,145
DP diploma	16,613	13,891	14,704	17,151	18,661
Anticipated	1,299	855	864	946	1,132
Diploma	12,697	11,730	11,743	13,201	13,955
Retake	2,617	1,306	2,097	3,004	3,574
Total	19,623	16,814	18,068	20,266	21,806

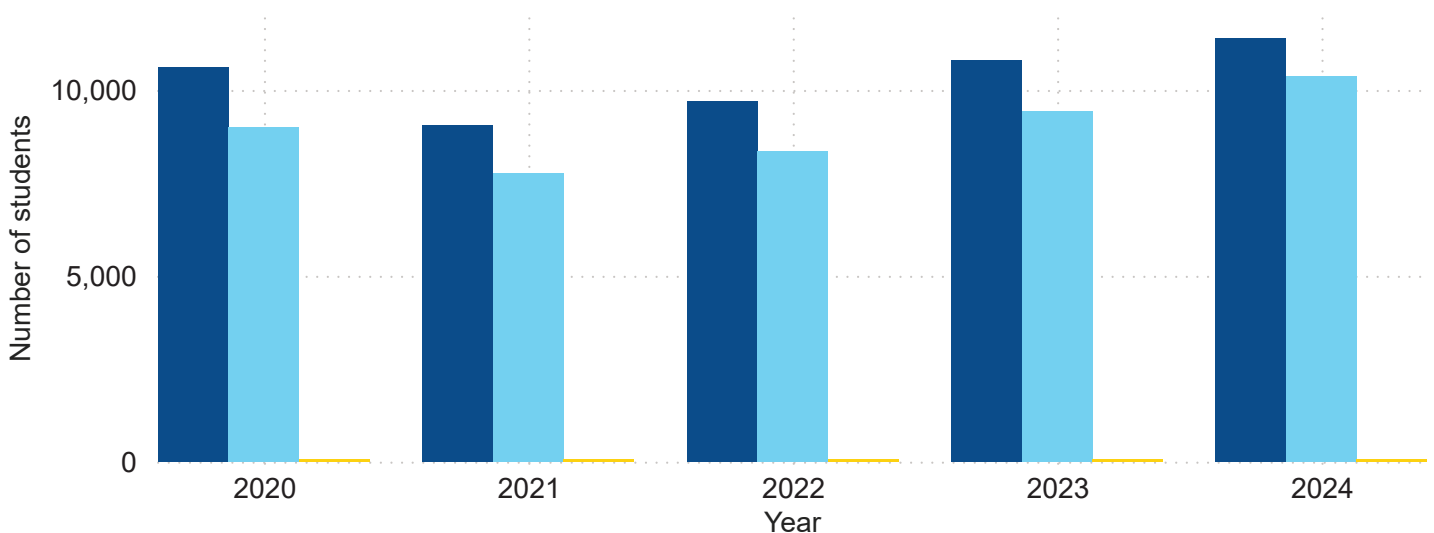
Number of students by region

● IB Africa, Europe and Middle East ● IB Americas ● IB Asia-Pacific



Number of students by gender

● F ● M ● X



Number of students by country

IB Americas

Country	Number of students
ANTIGUA AND BARBUDA	<10
ARGENTINA	1,930
BOLIVIA	132
BRAZIL	273
CANADA	56
CHILE	350
COLOMBIA	807
COSTA RICA	709
CURAÇAO	<10
ECUADOR	1,295
GUATEMALA	128
MEXICO	21
NICARAGUA	29
PANAMA	24
PARAGUAY	87
PERU	4,063
SINT MAARTEN (DUTCH PART)	<10
UNITED STATES	155
URUGUAY	383
VENEZUELA	<10

IB Asia-Pacific

Country	Number of students
AUSTRALIA	3,044
BANGLADESH	<10
BRUNEI DARUSSALAM	80
CAMBODIA	<10
CHINA	56
FIJI	27
HONG KONG	62
INDIA	484
INDONESIA	99
JAPAN	663
LAOS	<10
MALAYSIA	72
NEPAL	44
NEW ZEALAND	434
PAKISTAN	48
PAPUA NEW GUINEA	<10
PHILIPPINES	12
SINGAPORE	2,426
SOUTH KOREA	145
SRI LANKA	<10
TAIWAN	<10
THAILAND	10
VIETNAM	17

**Excludes withdrawn students.
Countries with fewer than ten students shows only <10**

IB Africa, Europe and Middle East

Country	Number of students	Country	Number of students
ALBANIA	<10	LATVIA	19
ANDORRA	<10	LEBANON	27
ANGOLA	<10	LESOTHO	17
ARMENIA	<10	LITHUANIA	21
AUSTRIA	61	LUXEMBOURG	10
AZERBAIJAN	<10	MALI	<10
BAHRAIN	<10	MALTA	13
BELGIUM	15	MAURITIUS	142
BOSNIA AND HERZEGOVINA	<10	MOROCCO	<10
BOTSWANA	36	MOZAMBIQUE	22
BULGARIA	11	NAMIBIA	<10
CAMEROON	<10	NETHERLANDS	94
CONGO (DEMOCRATIC REPUBLIC OF THE)	<10	NIGER	<10
CÔTE D'IVOIRE	20	NORTH MACEDONIA	<10
CROATIA	<10	NORWAY	88
CUBA	<10	OMAN	<10
CYPRUS	<10	POLAND	161
CZECHIA	17	PORTUGAL	63
DENMARK	50	QATAR	20
EGYPT	69	ROMANIA	17
ESTONIA	10	RUSSIA	<10
ESWATINI	135	RWANDA	11
ETHIOPIA	<10	SAUDI ARABIA	<10
FINLAND	153	SENEGAL	48
FRANCE	26	SERBIA	<10
GEORGIA	<10	SLOVAKIA	10
GERMANY	245	SLOVENIA	<10
GHANA	<10	SOUTH AFRICA	53
GREECE	33	SPAIN	330
GUERNSEY	<10	SWEDEN	48
HUNGARY	15	SWITZERLAND	94
ICELAND	<10	TANZANIA	<10
IRAN	<10	TOGO	11
IRAQ	36	TUNISIA	14
IRELAND	<10	TÜRKIYE	711
ISLE OF MAN	<10	UGANDA	<10
ISRAEL	<10	UNITED ARAB EMIRATES	121
ITALY	87	UNITED KINGDOM	215
JERSEY	<10	ZAMBIA	11
JORDAN	22		
KAZAKHSTAN	<10		
KENYA	31		
KUWAIT	<10		



International Baccalaureate®
Baccalauréat International
Bachillerato Internacional