



International Baccalaureate Organization

Diploma Programme

Statistical bulletin

May 2006
Examination session

Diploma Programme statistical bulletin, May 2006 examination session

Published in November 2006

International Baccalaureate Organization
Peterson House, Malthouse Avenue, Cardiff Gate
Cardiff, Wales CF23 8GL
United Kingdom
Phone: + 44 29 2954 7777
Fax: + 44 29 2054 7778
Web site: www.ibo.org

© International Baccalaureate Organization 2006

Statistical queries should be directed to the
management information department.

Phone: +44 29 2054 7706
Fax: +44 29 2054 7778
E-mail: statistics@ibo.org

Contents

Tables and graphs		Page
Index: key to abbreviations		3
PART A: general school statistics		4-6
1	Number of schools following the Diploma Programme 2002-2006	4
2	Number and percentage of schools following the Diploma Programme by working language 2002-2006	5
3	Number and percentage of schools following the Diploma Programme by IBO region 2002-2006	6
PART B: registration statistics		7-25
4	Number of schools registering candidates May 2002-May 2006	7
5	Number of schools registering candidates by working language May 2002-May 2006	8
6	Number and percentage of schools registering candidates by IBO region May 2002-May 2006	9
7	Number of candidates registered by category May 2002-May 2006	10
8	Number of candidates registered by gender May 2002-May 2006	12
9	Number of candidates registered by IBO region May 2002-May 2006	13
10	Number of candidates registered by category, gender and IBO region May 2006	14
11	Summary of Diploma Programme examination entries: schools with registered candidates May 1975-May 2006	15
12	Number of schools that registered a particular number of candidates May 2002-May 2006	17
13	Subject registration summary May 2006	18
14	Subject group registrations May 2002-May 2006	18
15	Additional Diploma Programme requirements: extended essay and theory of knowledge May 2006	19
16	Subject registration summary: extended essay by subject group May 2006	19
17	Subject registration summary: theory of knowledge by language May 2006	20
18	Nationalities of candidates registered May 2006	21
19	Number of countries represented by examination session May 2002-May 2006	23
20	Number of candidates registered by country May 2006	24

PART C: results statistics**26-40**

21	Analysis of examination results by subject and level May 2006	26
22	Diploma and retake candidates (D+R): distribution of points totals May 2006	34
23	Retake candidates only (R): distribution of points totals May 2006	35
24	Diploma score distribution: diploma and retake candidates (D+R) and retake candidates only (R) May 2006	36
25	Extended essay results May 2006	37
26	Theory of knowledge results May 2006	38
27	Distribution of additional points May 2002-May 2006	39
28	Mean points score worldwide May 2002-May 2006	40
29	Mean grade worldwide May 2002-May 2006	40
30	Pass rate worldwide May 2002-May 2006	40
31	Number of diplomas and bilingual diplomas awarded May 2002-May 2006	40

Index: key to abbreviations

Categories of registration

Diploma Programme candidates must register in one of five categories. These are identified by one of the following letters.

- D** **Diploma:** candidates intending to complete the requirements for the award of an IB diploma.
- R** **Retake:** previous IB diploma candidates who are seeking to improve their results. The highest grade obtained for a subject will contribute towards the IB diploma.
- C** **Certificate:** candidates taking one or more subjects who are not seeking the award of the IB diploma.
- A** **Anticipated:** candidates intending to complete the requirements for one or two standard level subjects (excluding languages *ab initio* and pilot subjects) at the end of their first year of the Diploma Programme. They must complete all remaining IB diploma requirements in the corresponding examination session in the following year.
- E** **Extra certificate:** candidates who are taking one or more subjects in addition to their designated Diploma Programme subjects.

IBO regions

Schools that are authorized to offer the IB Diploma Programme are grouped by geographical region. The abbreviations used in these tables are the codes used by each of the IBO regional offices.

IBAEM	International Baccalaureate Africa, Europe and the Middle East
IBAP	International Baccalaureate Asia-Pacific
IBLA	International Baccalaureate Latin America
IBNA	International Baccalaureate North America and Caribbean

Other abbreviations

HL	Higher level
SL	Standard level
EE	Extended essay
TOK	Theory of knowledge
PS	Pilot subjects
SBS	School-based syllabuses

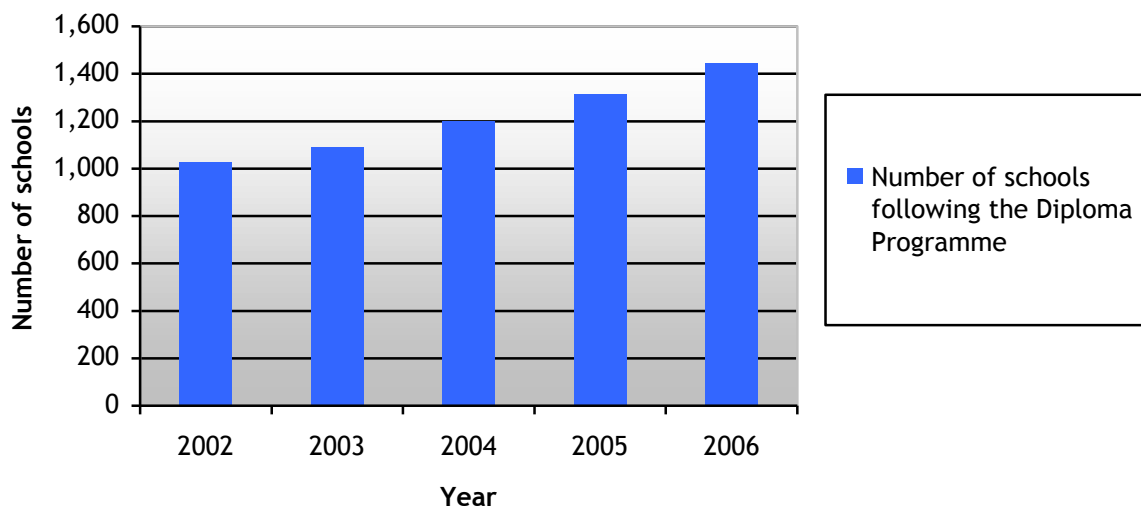
PART A: general school statistics

1 Number of schools following the Diploma Programme 2002-2006

Number of schools following the Diploma Programme*	2002	2003	2004	2005	2006
	1,025	1,092	1,199	1,315	1,443

*as of 31 May each year

Graph 1.1 Number of schools following the Diploma Programme 2002-2006

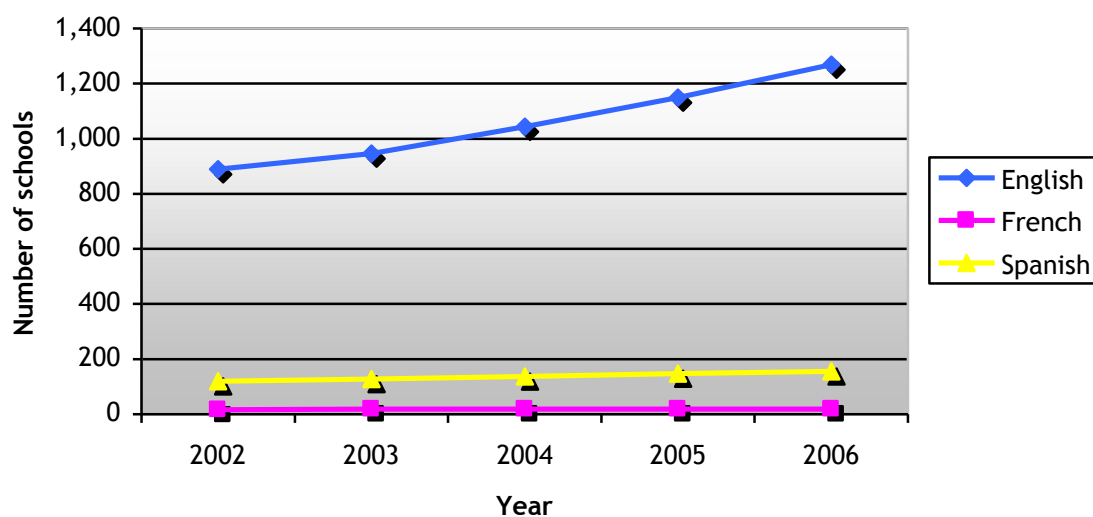


2 Number and percentage of schools following the Diploma Programme by working language 2002-2006

Number of schools following the Diploma Programme by working language*	2002	2003	2004	2005	2006
English	889	946	1,044	1,149	1,269
French	16	18	18	19	19
Spanish	120	128	137	147	155
Total	1,025	1,092	1,199	1,315	1,443

*as of 31 May each year

Graph 2.1 Number of schools following the Diploma Programme by working language 2002-2006



Percentage of schools following the Diploma Programme by working language*	2002	2003	2004	2005	2006
English	86.73%	86.63%	87.07%	87.38%	87.94%
French	1.56%	1.65%	1.50%	1.44%	1.32%
Spanish	11.71%	11.72%	11.43%	11.18%	10.74%

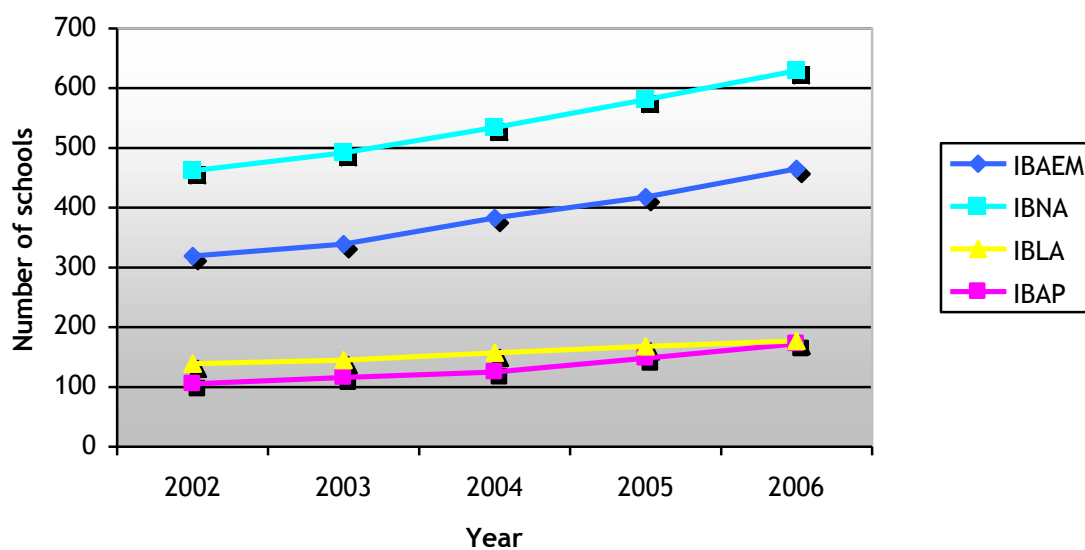
*as of 31 May each year

3 Number and percentage of schools following the Diploma Programme by IBO region 2002-2006

Number of schools following the Diploma Programme by IBO region*	2002	2003	2004	2005	2006
IBAEM	319	339	383	418	465
IBAP	105	116	125	148	172
IBLA	139	145	157	168	177
IBNA	462	492	534	581	629
Total	1,025	1,092	1,199	1,315	1,443

*as of 31 May each year

Graph 3.1 Number of schools following the Diploma Programme by IBO region 2002-2006



Percentage of schools following the Diploma Programme by IBO region*	2002	2003	2004	2005	2006
IBAEM	31.12%	31.04%	31.94%	31.79%	32.22%
IBAP	10.25%	10.62%	10.43%	11.25%	11.92%
IBLA	13.56%	13.28%	13.09%	12.78%	12.27%
IBNA	45.07%	45.06%	44.54%	44.18%	43.59%

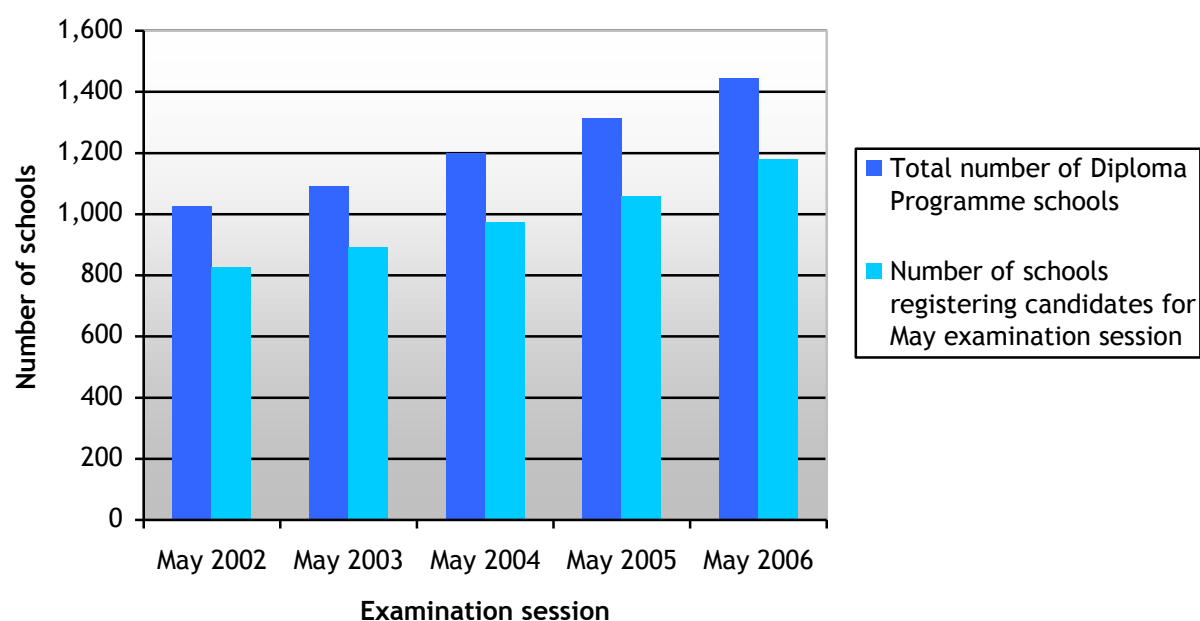
*as of 31 May each year

PART B: registration statistics

4 Number of schools registering candidates May 2002-May 2006

Number of schools registering candidates	May 2002	May 2003	May 2004	May 2005	May 2006
	825	890	974	1,059	1,178
Percentage of total number of schools	80.49%	81.50%	81.23%	80.53%	81.70%

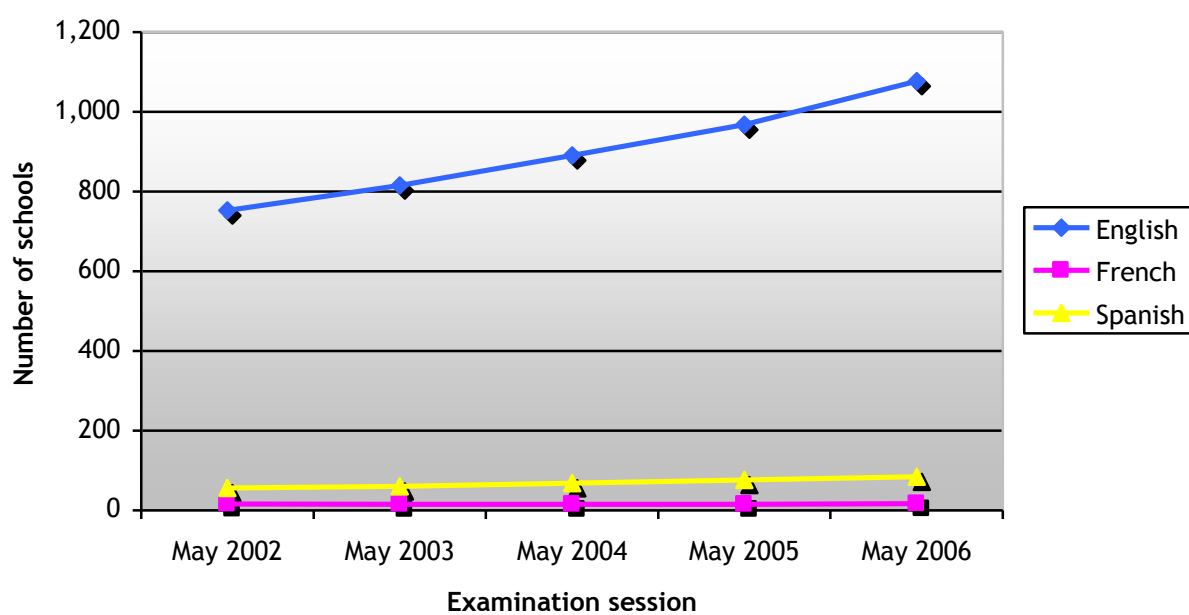
Graph 4.1 Number of schools registering candidates May 2002-May 2006



5 Number of schools registering candidates by working language May 2002-May 2006

Number of schools registering candidates by working language	May 2002	May 2003	May 2004	May 2005	May 2006
English	753	815	891	968	1,077
French	16	15	15	15	17
Spanish	56	60	68	76	84
Total	825	890	974	1,059	1,178

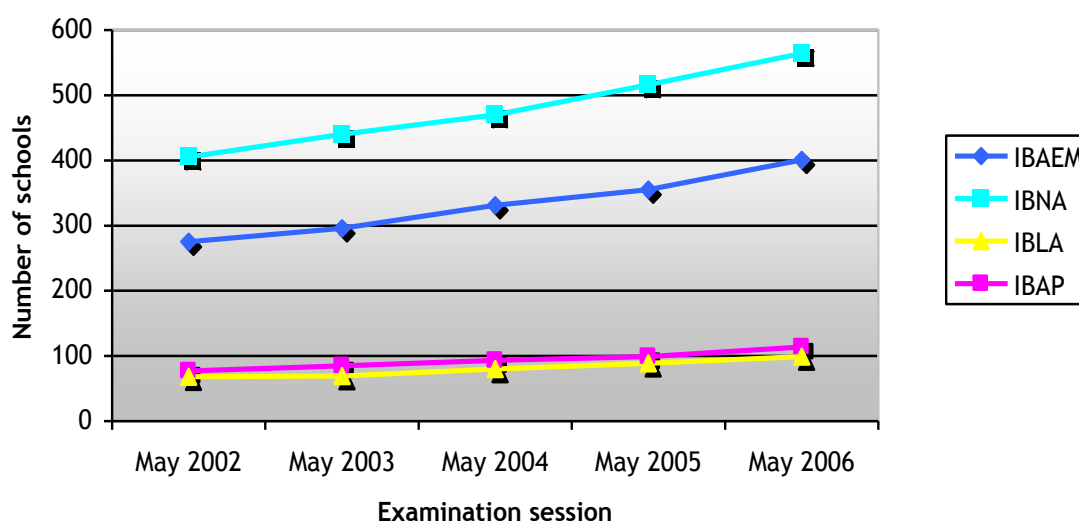
Graph 5.1 Number of schools registering candidates by working language May 2002-May 2006



6 Number and percentage of schools registering candidates by IBO region May 2002-May 2006

Number of schools registering candidates by IBO region	May 2002	May 2003	May 2004	May 2005	May 2006
IBAEM	275	296	331	355	401
IBAP	77	85	93	99	114
IBLA	68	69	80	89	99
IBNA	405	440	470	516	564
Total	825	890	974	1,059	1,178

Graph 6.1 Number of schools registering candidates by IBO region May 2002-May 2006



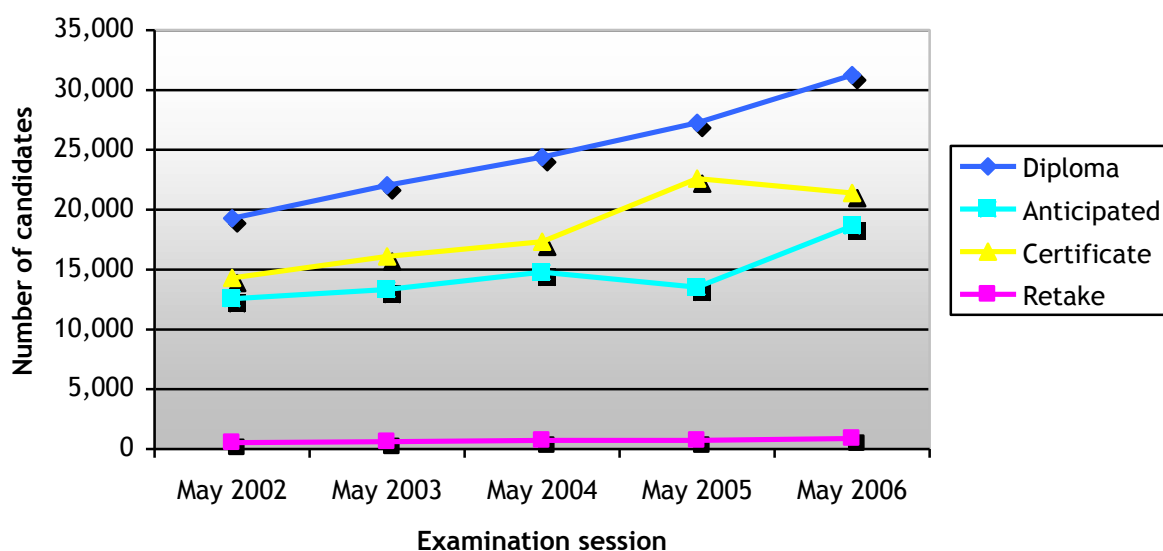
Percentage of schools registering candidates by IBO region	May 2002	May 2003	May 2004	May 2005	May 2006
IBAEM	33.33%	33.26%	33.98%	33.52%	34.04%
IBAP	9.33%	9.55%	9.55%	9.35%	9.68%
IBLA	8.24%	7.75%	8.21%	8.40%	8.40%
IBNA	49.09%	49.44%	48.25%	48.73%	47.88%

7 Number of candidates registered by category May 2002-May 2006

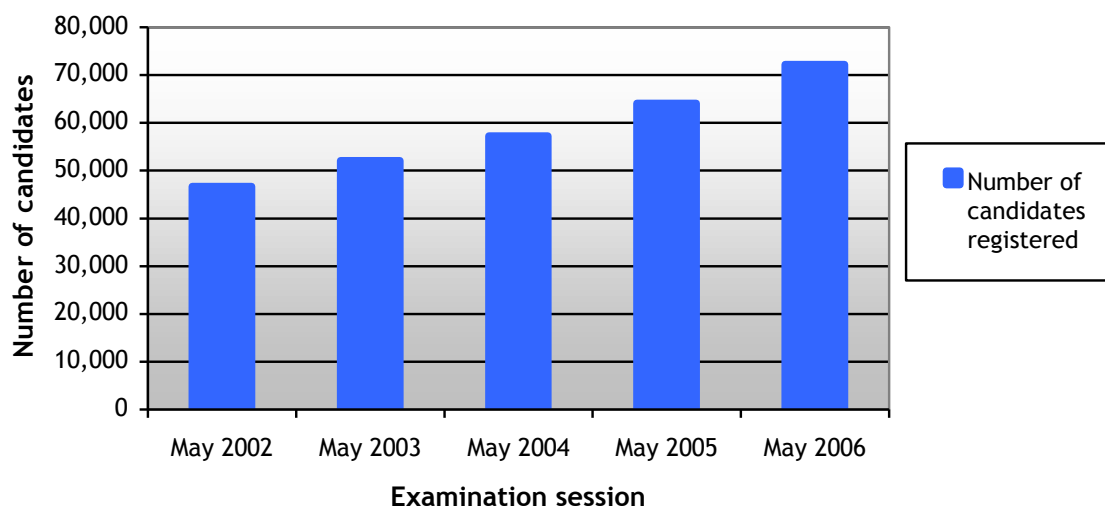
Number of candidates registered by category	May 2002	May 2003	May 2004	May 2005	May 2006
Diploma	19,270	22,045	24,388	27,249	31,249
Retake	526	617	723	722	877
Certificate	14,305	16,106	17,337	22,597	*21,401
Anticipated	12,558	13,342	14,782	13,513	*18,643
Total	46,659	52,110	57,230	64,081	72,170

* Please note: Anticipated candidates are allowed to change their category to certificate and this will affect these figures.

Graph 7.1 Number of candidates registered by category May 2002-May 2006



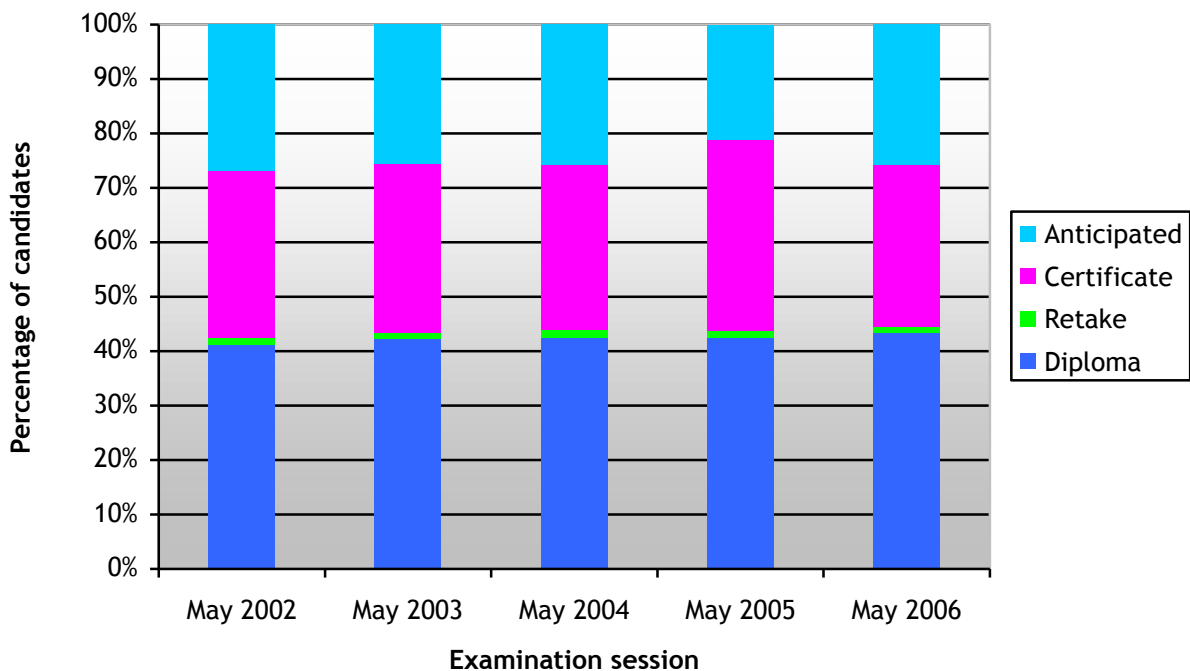
Graph 7.2 Number of candidates registered May 2002-May 2006



Percentage of candidates registered by category	May 2002	May 2003	May 2004	May 2005	May 2006
Diploma	41.30%	42.30%	42.61%	42.52%	43.30%
Retake	1.13%	1.18%	1.26%	1.13%	1.22%
Certificate	30.66%	30.91%	30.29%	35.26%	*29.65%
Anticipated	26.91%	25.60%	25.83%	21.09%	*25.83%

* Please note: Anticipated candidates are allowed to change their category to certificate and this will affect these figures.

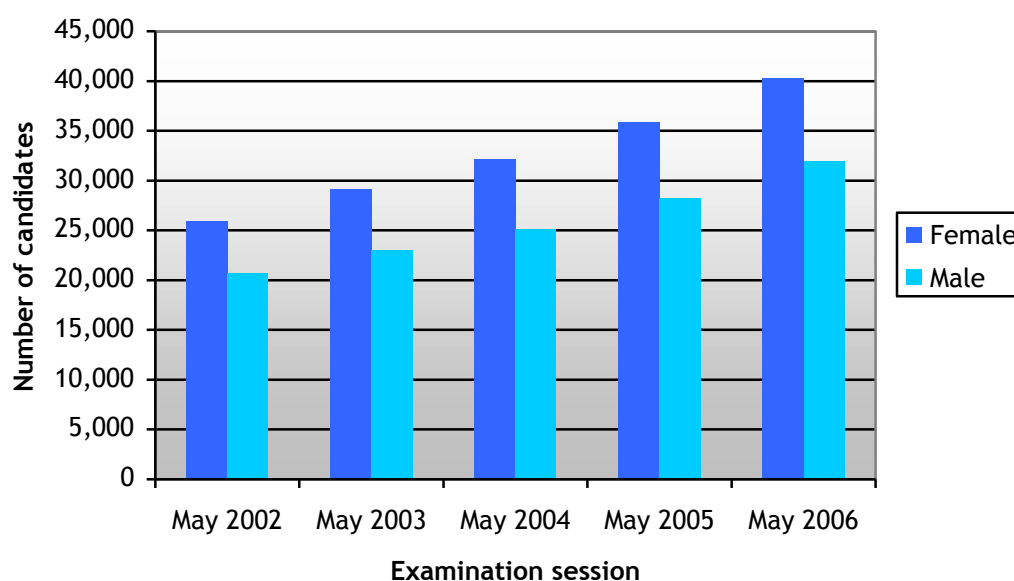
Graph 7.3 Percentages of candidates registered May 2002-May 2006



8 Number of candidates registered by gender May 2002-May 2006

Number of candidates registered by gender	May 2002	May 2003	May 2004	May 2005	May 2006
Female	25,944	29,136	32,118	35,824	40,252
Male	20,715	22,974	25,112	28,257	31,918
Total	46,659	52,110	57,230	64,081	72,170

Graph 8.1 Number of candidates registered by gender May 2002-May 2006

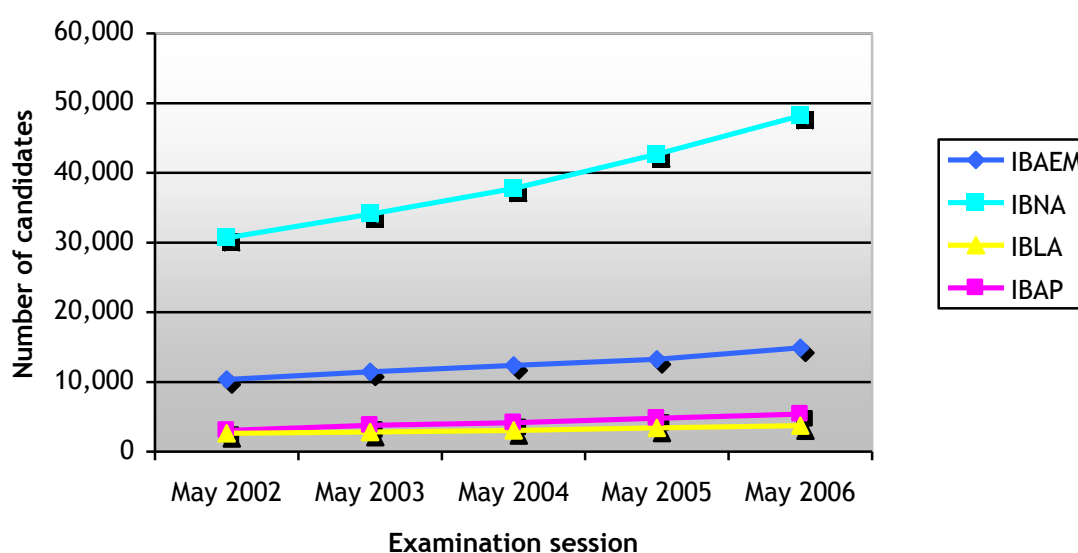


Percentage of candidates registered by gender	May 2002	May 2003	May 2004	May 2005	May 2006
Female	55.60%	55.91%	56.12%	55.90%	55.77%
Male	44.40%	44.09%	43.88%	44.10%	44.23%

9 Number of candidates registered by IBO region May 2002-May 2006

Number of candidates registered by IBO region	May 2002	May 2003	May 2004	May 2005	May 2006
IBAEM	10,366	11,458	12,347	13,221	14,884
IBAP	3,046	3,771	4,136	4,782	5,382
IBLA	2,598	2,810	3,021	3,395	3,702
IBNA	30,649	34,071	37,726	42,683	48,202
Total	46,659	52,110	57,230	64,081	72,170

Graph 9.1 Number of candidates registered by IBO region May 2002-May 2006

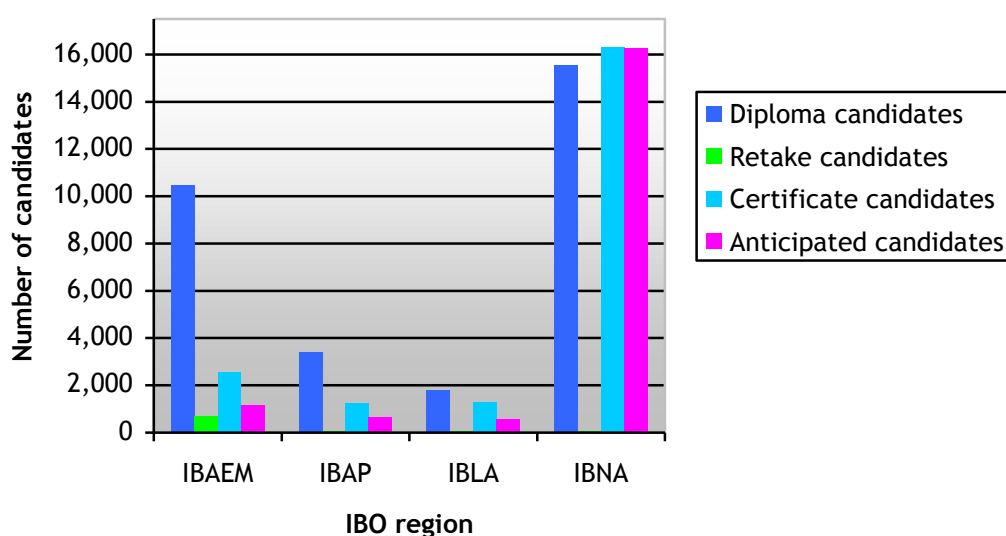


Number of candidates registered by IBO region	May 2002	May 2003	May 2004	May 2005	May 2006
IBAEM	22.22%	21.99%	21.57%	20.63%	20.62%
IBAP	6.53%	7.24%	7.23%	7.46%	7.46%
IBLA	5.57%	5.39%	5.28%	5.30%	5.13%
IBNA	65.69%	65.38%	65.92%	66.61%	66.79%

10 Number of candidates registered by category, gender and IBO region May 2006

IBO region	Category	Number of candidates registered		Total number of candidates registered
		Number of female candidates	Number of male candidates	
IBAEM	Diploma	5,626	4,867	10,493
	Retake	345	343	688
	Certificate	1,241	1,313	2,554
	Anticipated	593	556	1,149
IBAP	Diploma	1,794	1,624	3,418
	Retake	29	36	65
	Certificate	575	667	1,242
	Anticipated	320	337	657
IBLA	Diploma	905	888	1,793
	Retake	28	25	53
	Certificate	644	662	1,306
	Anticipated	266	284	550
IBNA	Diploma	9,013	6,532	15,545
	Retake	38	33	71
	Certificate	9,462	6,837	16,299
	Anticipated	9,373	6,914	16,287
Total		40,252	31,918	72,170

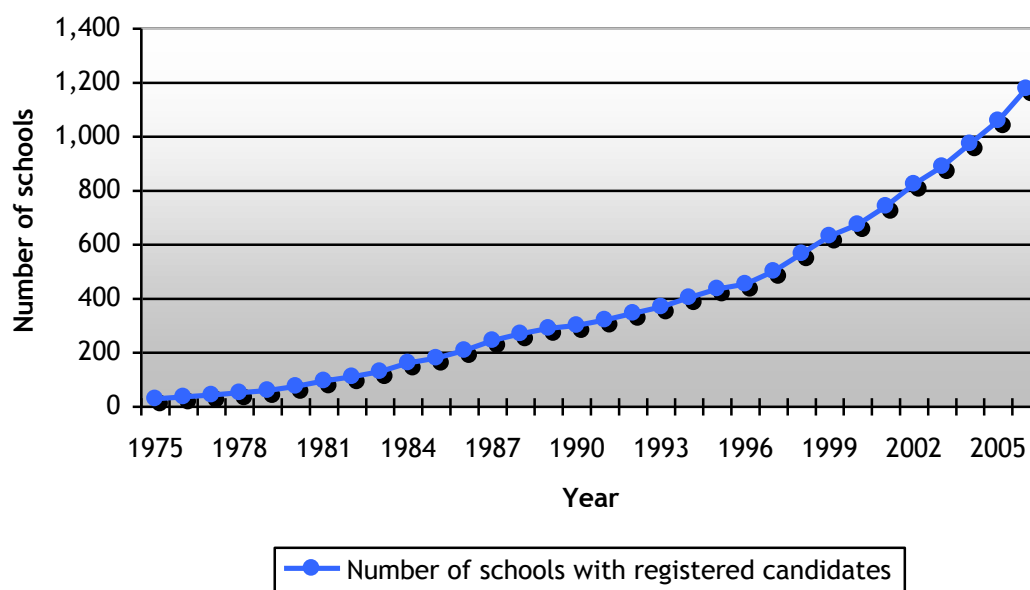
Graph 10.1 Number of candidates registered by category and IBO region May 2006



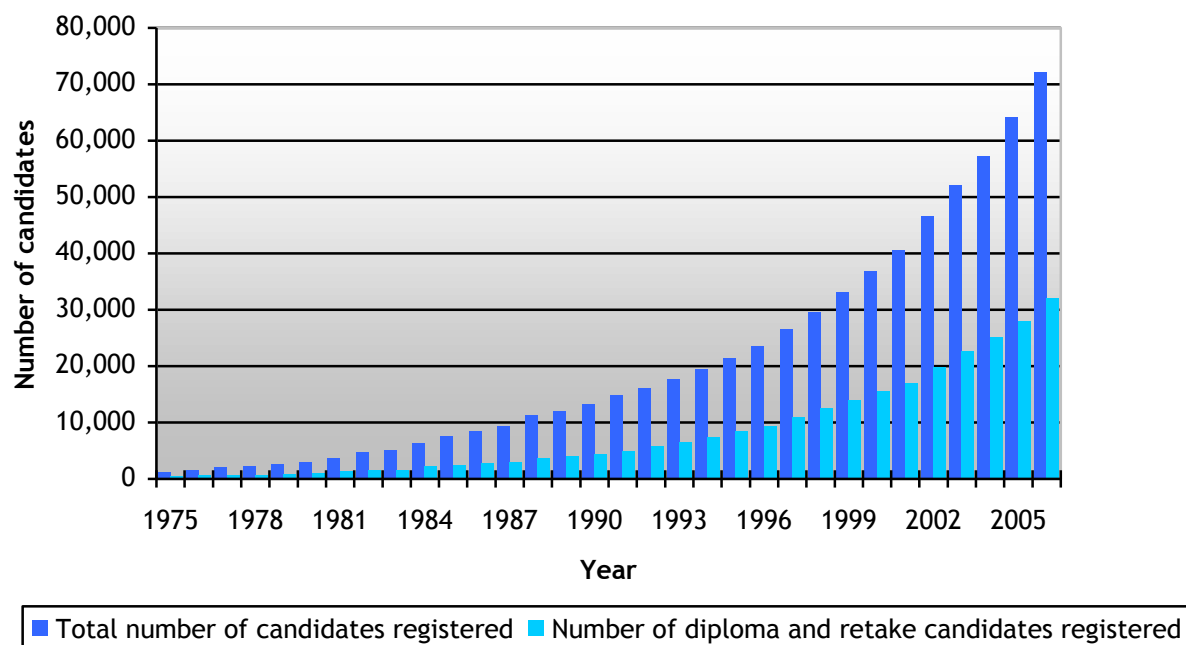
11 Summary of Diploma Programme examination entries: schools with registered candidates May 1975-May 2006

Year	Number of schools entered	Percentage increase	Number of candidates examined	Percentage increase	Average number of candidates per school	Number of diploma and retake candidates	Average number of diploma and retake candidates per school
1975	30	30%	1,217	19%	40.6	377	12.6
1976	37	23%	1,600	31%	43.2	567	15.3
1977	44	19%	1,966	23%	44.7	644	14.6
1978	52	18%	2,222	13%	42.7	680	13.1
1979	61	17%	2,479	12%	40.6	835	13.7
1980	76	25%	2,845	15%	37.4	1,005	13.2
1981	96	26%	3,719	31%	38.7	1,244	13.0
1982	111	16%	4,644	25%	41.8	1,505	13.6
1983	131	18%	5,021	8%	38.3	1,603	12.2
1984	163	24%	6,385	27%	39.2	2,183	13.4
1985	180	10%	7,606	19%	42.3	2,440	13.6
1986	209	16%	8,389	10%	40.1	2,679	12.8
1987	246	18%	9,387	12%	38.2	2,942	12.0
1988	270	10%	11,233	20%	41.6	3,564	13.2
1989	291	8%	11,946	6%	41.1	3,904	13.4
1990	301	3%	13,321	12%	44.3	4,287	14.2
1991	322	7%	14,749	11%	45.8	4,811	14.9
1992	346	7%	16,078	9%	46.5	5,693	16.5
1993	370	7%	17,552	9%	47.4	6,432	17.4
1994	405	9%	19,509	11%	48.2	7,331	18.1
1995	437	8%	21,361	9%	48.9	8,403	19.2
1996	455	4%	23,448	10%	51.5	9,396	20.7
1997	502	10%	26,570	13%	52.9	10,868	21.6
1998	567	13%	29,505	11%	52.0	12,476	22.0
1999	632	11%	33,143	12%	52.4	14,001	22.2
2000	675	7%	36,758	11%	54.5	15,592	23.1
2001	743	10%	40,579	10%	54.6	16,880	22.7
2002	825	11%	46,659	15%	56.6	19,796	24.0
2003	890	8%	52,110	12%	58.6	22,662	25.5
2004	974	9%	57,230	10%	58.8	25,111	25.8
2005	1,059	9%	64,081	12%	60.5	27,971	26.4
2006	1,178	11%	72,170	13%	61.3	32,126	27.3

Graph 11.1 Summary of Diploma Programme examination entries: schools with candidates registered May 1975-May 2006

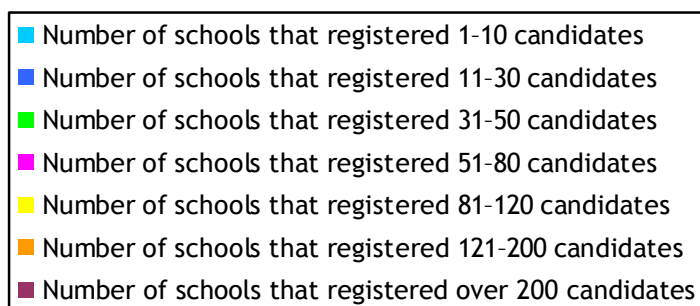
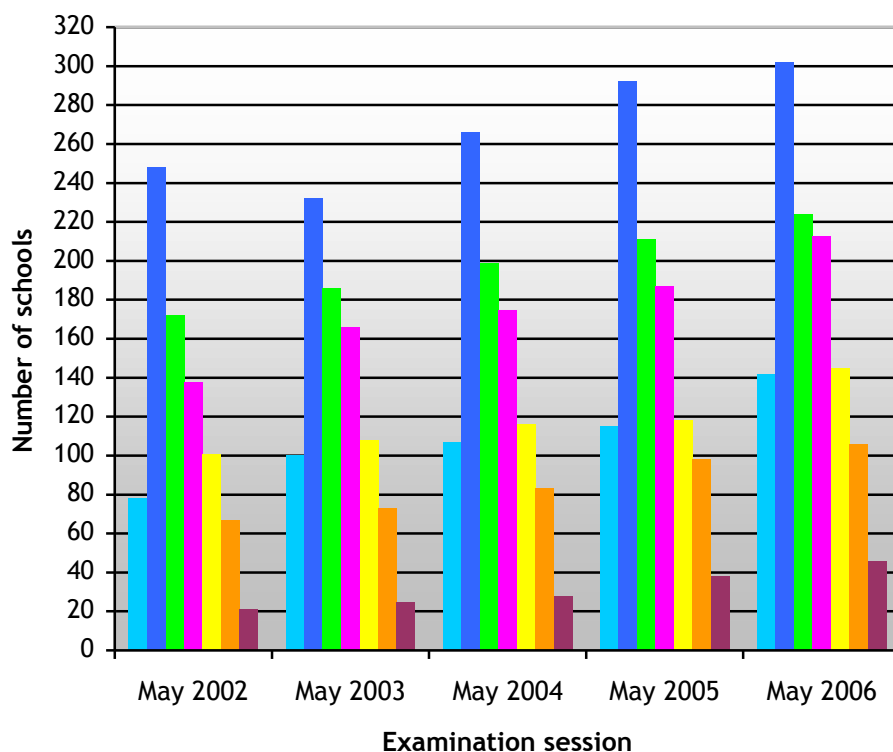


Graph 11.2 Summary of Diploma Programme examination entries: total number of candidates registered and number of diploma and retake candidates registered May 1975-May 2006



12 Number of schools that registered a particular number of candidates May 2002-May 2006

Graph 12.1 Number of schools that registered a particular number of candidates May 2002-May 2006



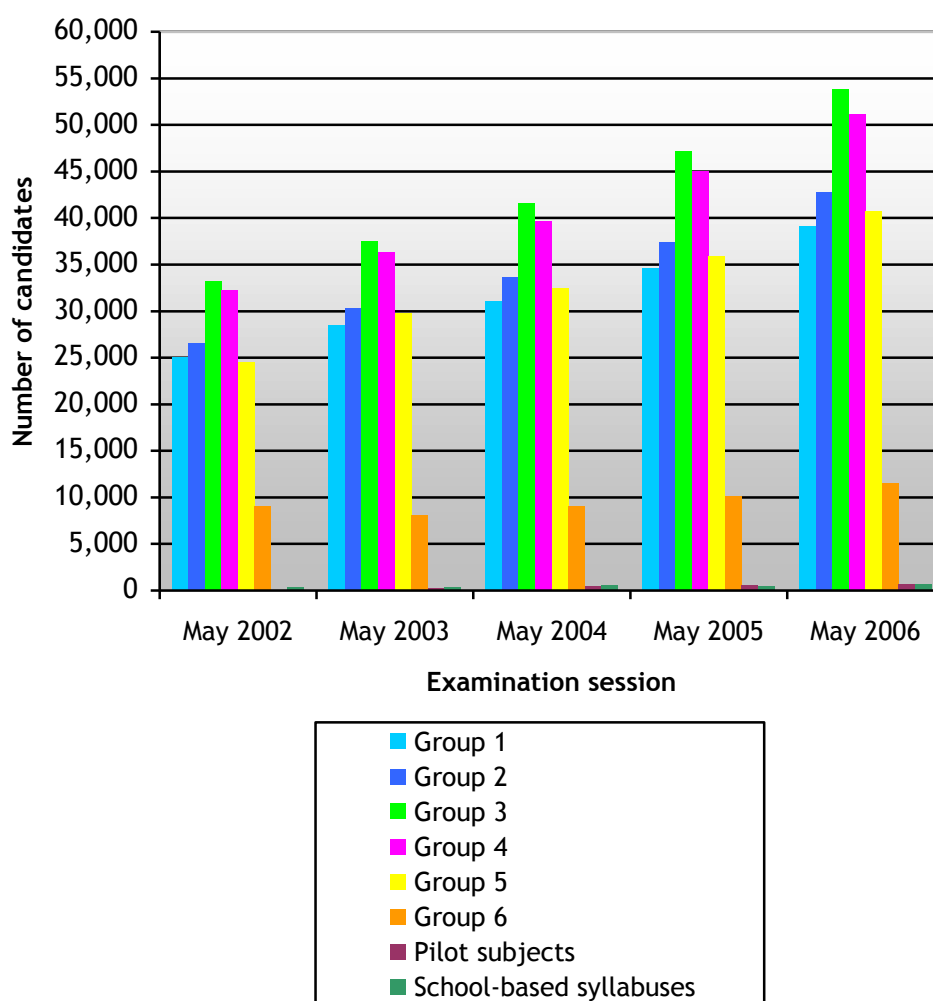
Number of schools that registered a particular number of candidates	May 2002	May 2003	May 2004	May 2005	May 2006
1-10 candidates	78	100	107	115	142
11-30 candidates	248	232	266	292	302
31-50 candidates	172	186	199	211	224
51-80 candidates	138	166	175	187	213
81-120 candidates	101	108	116	118	145
121-200 candidates	67	73	83	98	106
Over 200 candidates	21	25	28	38	46
Total	825	890	974	1,059	1,178

13 Subject registration summary May 2006

Subject group	Subject registrations				Number of subjects		
	English	French	Spanish	Total	Higher level	Standard level	Total
Group 1	-	-	-	39,151	45	66	111
Group 2	-	-	-	42,836	41	53	94
Group 3	50,955	635	2,298	53,888	13	9	22
Group 4	48,430	680	2,027	51,137	4	5	9
Group 5	38,383	530	1,841	40,754	2	4	6
Group 6	10,949	37	550	11,536	3	6	9
PS	724	-	-	724	3	5	8
SBS	632	11	11	654	-	17	17
Totals	150,073	1,893	6,727	240,680	111	165	276

14 Subject group registrations May 2002-May 2006

Graph 14.1 Number of candidates registered for subject groups May 2002-May 2006



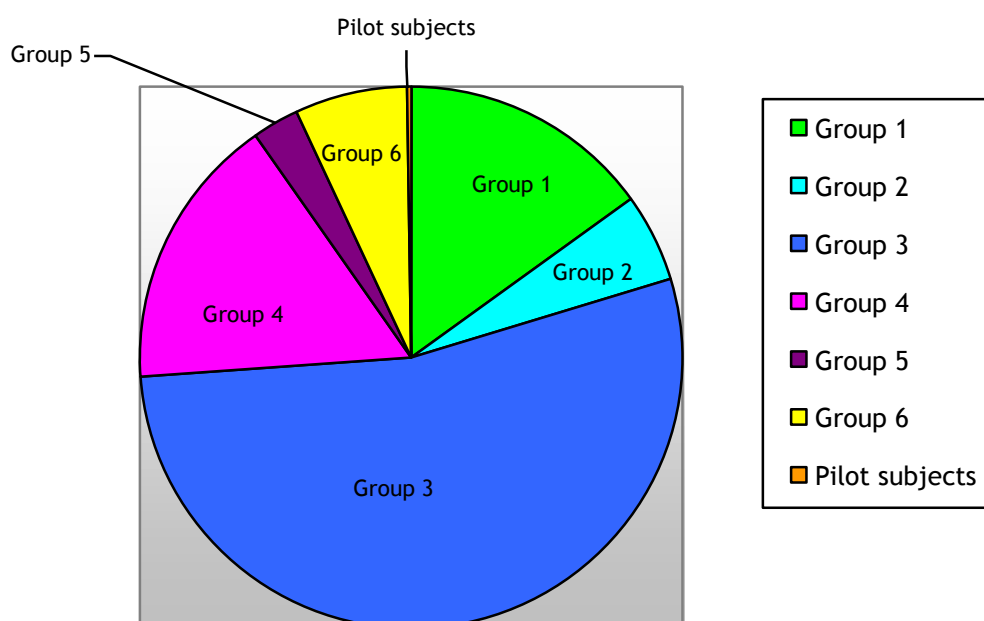
15 Additional Diploma Programme requirements: extended essay and theory of knowledge May 2006

Number of candidates registered for extended essay and theory of knowledge	May 2002	May 2003	May 2004	May 2005	May 2006
Extended essay	19,247	21,982	24,340	27,181	31,198
Theory of knowledge	19,251	21,981	24,328	27,172	31,183

16 Subject registration summary: extended essay by subject group May 2006

Number of EE candidates registered for a particular subject group	Group 1	Group 2	Group 3	Group 4	Group 5	Group 6	Pilot subjects	Total
	4,639	1,661	16,783	5,066	902	2,048	99	31,198
Percentage of EE candidates registered for a particular subject group	14.87%	5.32%	53.80%	16.24%	2.89%	6.56%	0.32%	100.00%

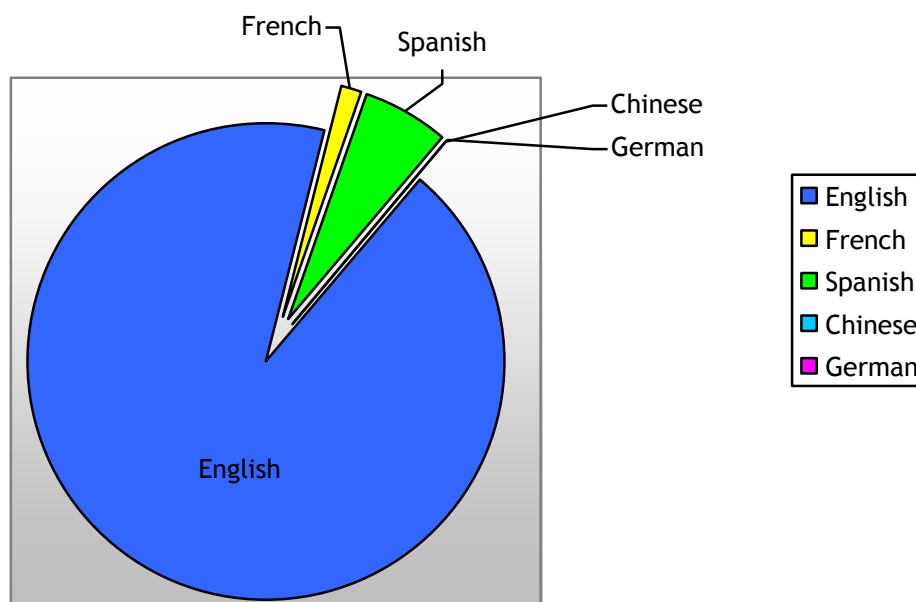
Graph 16.1 Subject registration summary: extended essay by subject group May 2006



17 Subject registration summary: theory of knowledge by language May 2006

Theory of knowledge registration by language	English	French	Spanish	Chinese	German	Total
Number of candidates registered	29,047	441	1,661	18	16	31,183
Percentage of candidates registered	93.15%	1.41%	5.33%	0.06%	0.05%	100.00%

Graph 17.1 Subject registration summary: theory of knowledge by language May 2006



18 Nationalities of candidates registered May 2006

Country name	Number of candidates	Country name	Number of candidates
AFGANISTAN	123	CUBA	57
ALBANIA	28	CYPRUS	21
ALGERIA	19	CZECH REPUBLIC	143
ANGOLA	12	CÔTE D'IVOIRE	7
ANGUILLA	1	DENMARK	321
ANTIGUA AND BARBUDA	2	DJIBOUTI	1
ARGENTINA	190	DOMINICA	4
ARMENIA	18	DOMINICAN REPUBLIC	41
ARUBA	1	EAST TIMOR	3
AUSTRALIA	452	ECUADOR	368
AUSTRIA	210	EGYPT	257
AZERBAIJAN	10	EL SALVADOR	118
BAHAMAS	27	EQUATORIAL GUINEA	3
BAHRAIN	186	ERITREA	10
BANGLADESH	80	ESTONIA	22
BARBADOS	6	ETHIOPIA	104
BELARUS	21	FALKLAND ISLANDS (ISLAS MALVINAS)	1
BELGIUM	233	FAROE ISLANDS	2
BELIZE	8	FIJI	9
BENIN	2	FINLAND	451
BERMUDA	68	FRANCE	638
BHUTAN	2	GEORGIA	7
BOLIVIA	70	GERMANY	1,380
BOSNIA AND HERZEGOVINA	71	GHANA	102
BOTSWANA	9	GREECE	436
BRAZIL	476	GREENLAND	2
BRITISH INDIAN OCEAN TERRITORY	3	GRENADA	1
BRUNEI	24	GUAM	2
BULGARIA	147	GUATEMALA	50
BURKINA FASO	3	GUINEA	4
BURUNDI	11	GUYANA	16
CAMBODIA	23	HAITI	46
CAMEROON	18	HONDURAS	136
CANADA	7,242	HONG KONG SPEC. ADMIN REGION CHINA	252
CAPE VERDE	2	HUNGARY	100
CAYMAN ISLANDS	1	ICELAND	31
CHILE	84	INDIA	1,338
CHINA	1,178	INDONESIA	288
COLOMBIA	562	IRAN	164
CONGO (DEMOCRATIC REPUBLIC OF THE)	5	IRAQ	36
CONGO (REPUBLIC OF THE)	7	IRELAND	134
COOK ISLANDS	1	ISRAEL	148
COSTA RICA	120	ITALY	573
CROATIA	97	JAMAICA	70

Country name	Number of candidates	Country name	Number of candidates
JAPAN	635	PARAGUAY	11
JORDAN	253	PERU	161
KAZAKHSTAN	41	PHILIPPINES	339
KENYA	145	POLAND	614
KUWAIT	56	PORTUGAL	207
KYRGYZSTAN	9	PUERTO RICO	46
LAVIA	79	QATAR	16
LEBANON	216	ROMANIA	138
LESOTHO	56	RUSSIAN FEDERATION	420
LIBERIA	7	RWANDA	11
LIBYA	8	SAINT VINCENT AND THE GRENADINES	1
LIECHTENSTEIN	1	SAUDI ARABIA	60
LITHUANIA	74	SENEGAL	31
LUXEMBOURG	28	SERBIA AND MONTENEGRO	61
MACAU	5	SEYCHELLES	3
MACEDONIA, THE FORMER YUGOSLAV REPUBLIC OF	38	SIERRA LEONE	14
MADAGASCAR	6	SINGAPORE	141
MALAWI	6	SLOVAKIA	78
MALAYSIA	619	SLOVENIA	65
MALDIVES	8	SALOMON ISLANDS	1
MALI	3	SOMALIA	35
MALTA	19	SOUTH AFRICA	162
MAURITANIA	1	SOUTH KOREA	861
MAURITIUS	37	SPAIN	1,238
MEXICO	2,128	SRI LANKA	90
MOLDOVA	14	SUDAN	28
MONACO	1	SURINAME	1
MONGOLIA	18	SWAZILAND	7
MONTSERRAT	1	SWEDEN	1,187
MOROCCO	79	SWITZERLAND	337
MOZAMBIQUE	2	SYRIA	36
NAMIBIA	14	TAIWAN	309
NEPAL	36	TIJKISTAN	1
NETHERLANDS	1,459	TANZANIA	87
NETHERLANDS ANTILLES	1	THAILAND	408
NEW ZEALAND	96	TOGO	20
NICARAGUA	25	TONGA	4
NIGER	3	TRINIDAD AND TOBAGO	35
NIGERIA	104	TUNISIA	12
NORTH KOREA	109	TURKEY	395
NORWAY	580	UGANDA	34
PAKISTAN	211	UKRAINE	131
PALAU	3	UNITED ARAB EMIRATES	14
PALESTINIAN TERRITORY, OCCUPIED	71	UNITED KINGDOM	3,081
PANAMA	48	UNITED STATES MINOR OUTLINING ISLANDS	5
PAPUA NEW GUINEA	2	UNITED STATES OF AMERICA	42,691

Country name	Number of candidates	Country name	Number of candidates
URUGUAY	186	YEMEN	6
UZBEKISTAN	7	ZAMBIA	30
VENEZUELA	223	ZIMBABWE	40
VIETNAM	345		
WESTERN SAHARA	56	OTHER	129
WESTERN SAMOA	5	STATELESS	3

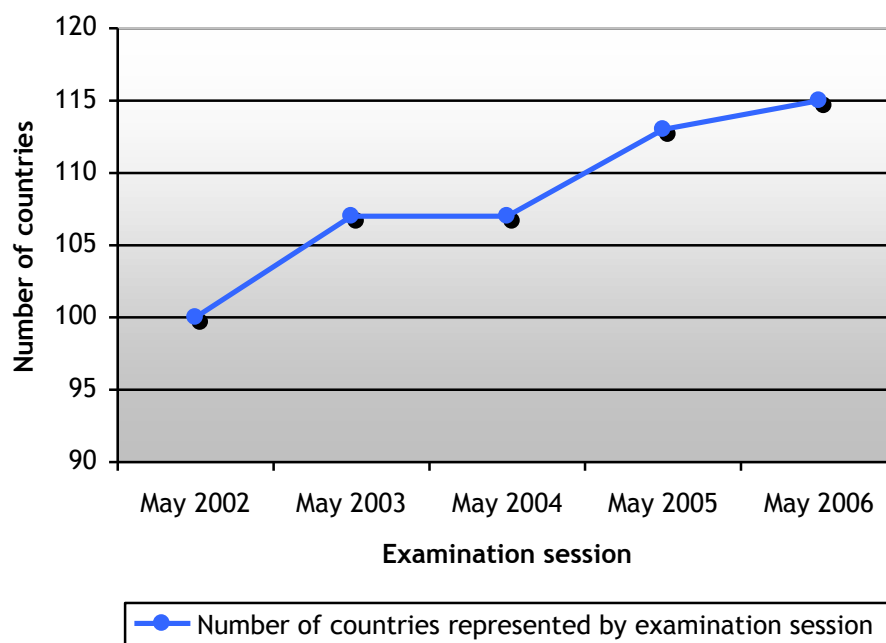
Total number of nationalities: 193

Candidates with dual nationality (included in above): 7,319

19 Number of countries represented by examination session May 2002-May 2006

Number of countries represented by examination session	May 2002	May 2003	May 2004	May 2005	May 2006
	100	107	107	113	115

Graph 19.1 Number of countries represented by examination session May 2002-May 2006



20 Number of candidates registered by country May 2006

Country name	Number of candidates registered	Country name	Number of candidates registered
ARGENTINA	99	IRELAND	20
AUSTRALIA	161	ISRAEL	16
AUSTRIA	279	ITALY	478
AZERBAIJAN	15	JAPAN	312
BAHAMAS	30	JORDAN	211
BAHRAIN	236	KAZAKHSTAN	6
OBELGIUM	278	KENYA	161
BERMUDA	83	KOREA, REPUBLIC OF	126
BOLIVIA	7	KUWAIT	97
BOSNIA AND HERZEGOVINA	25	LATVIA	41
BOTSWANA	4	LEBANON	104
BRAZIL	341	LESOTHO	64
BRUNEI DARUSSALAM	33	LITHUANIA	44
BULGARIA	23	LUXEMBOURG	88
CAMBODIA	21	MACEDONIA	17
CANADA	6,749	MALAWI	19
CHILE	61	MALAYSIA	622
CHINA	653	MALTA	25
COLOMBIA	396	MAURITIUS	19
COSTA RICA	117	MEXICO	1,689
CROATIA	43	MONACO	17
CYPRUS	19	MONGOLIA	12
CZECH REPUBLIC	149	MOROCCO	86
DENMARK	283	NAMIBIA	16
DOMINICAN REPUBLIC	12	NETHERLANDS	1,372
ECUADOR	332	NETHERLANDS ANTILLES	22
EGYPT	249	NEW ZEALAND	56
EL SALVADOR	75	NICARAGUA	4
ESTONIA	4	NIGERIA	7
ETHIOPIA	53	NORWAY	666
FIJI	2	OMAN	44
FINLAND	343	PAKISTAN	13
FRANCE	431	PALESTINIAN TERRITORY, OCCUPIED	56
GERMANY	709	PANAMA	31
GHANA	137	PARAGUAY	1
GREECE	415	PERU	79
GUAM	51	PHILIPPINES	285
GUATEMALA	3	POLAND	407
HONDURAS	118	PORTUGAL	180
HONG KONG	451	QATAR	30
HUNGARY	81	ROMANIA	36
ICELAND	29	RUSSIAN FEDERATION	97
INDIA	671	SAUDI ARABIA	152
INDONESIA	479	SENEGAL	15
IRAN, ISLAMIC REPUBLIC OF	20	SINGAPORE	413

Country name	Number of candidates registered	Country name	Number of candidates registered
SLOVAKIA	45	TUNISIA	30
SLOVENIA	66	TURKEY	319
SOUTH AFRICA	36	UGANDA	33
SPAIN	1,097	UKRAINE	35
SRI LANKA	53	UNITED ARAB EMIRATES	200
SWAZILAND	14	UNITED KINGDOM	2,402
SWEDEN	1,085	UNITED STATES	41,306
SWITZERLAND	876	URUGUAY	179
SYRIAN ARAB REPUBLIC	10	VENEZUELA	170
TAIWAN	301	VIETNAM	67
TANZANIA, UNITED REPUBLIC OF	112	ZAMBIA	51
THAILAND	600	ZIMBABWE	31
TOGO	26	Total number of candidates registered	72,170

PART C: results statistics

21 Analysis of examination results by subject and level May 2006

Subject	Level	Number of candidates	Percentage of candidates awarded grades							Mean grade
			1	2	3	4	5	6	7	
GROUP 1										
ALBANIAN A1	HL	1							100	7.00
ALBANIAN A1	SL	4						75	25	6.25
AMHARIC A1	HL	2						50	50	6.50
AMHARIC A1	SL	20				5	5	70	20	6.05
ARABIC A1	HL	112				3	47	45	5	5.52
ARABIC A1	SL	146				3	34	47	16	5.76
BELARUSIAN A1	SL	1						100		6.00
BEMBA A1	SL	1					100			5.00
BENGLI A1	SL	1				100				4.00
BOSNIAN A1	HL	24			4	17	25	38	17	5.52
BOSNIAN A1	SL	2							100	7.00
BULGARIAN A1	HL	17						29	71	6.71
BULGARIAN A1	SL	14					21	43	36	6.15
BURMESE A1	SL	1						100		6.00
CATALAN A1	HL	27				7	33	41	19	5.72
CATALAN A1	SL	10				10	70	10	10	5.20
CHINESE A1	HL	196		1		6	32	48	14	5.72
CHINESE A1	SL	204	0		1	15	35	38	10	5.36
CROATIAN A1	HL	19				5	21	58	16	5.85
CROATIAN A1	SL	20				10	30	45	15	5.65
CZECH A1	HL	62				10	61	24	5	5.24
CZECH A1	SL	8			13	25	25	25	13	5.05
DANISH A1	HL	98		1	3	18	38	32	8	5.21
DANISH A1	SL	41			2	27	27	37	7	5.20
DHIVEHI A1	SL	3						67	33	6.33
DUTCH A1	HL	43		2	2	33	40	16	7	4.87
DUTCH A1	SL	96			1	19	30	42	8	5.37
DZONGKHA A1	SL	2					50		50	6.00
ENGLISH A1	HL	24,572	0	1	5	33	42	17	3	4.82
ENGLISH A1	SL	5,131		0	4	26	38	26	6	5.04
ESTONIAN A1	SL	3					33		67	6.34
FINNISH A1	HL	111				3	21	47	30	6.09
FINNISH A1	SL	99				4	15	49	31	6.02
FRENCH A1	HL	411		0	5	22	43	26	4	5.02
FRENCH A1	SL	175			5	29	35	23	7	4.93
GERMAN A1	HL	554			0	8	36	37	20	5.74
GERMAN A1	SL	249			1	4	32	39	24	5.81
HEBREW A1	HL	9					11	11	78	6.67
HEBREW A1	SL	19					5	37	58	6.53
HINDI A1	HL	1						100		6.00
HINDI A1	SL	33					9	39	52	6.43

HUNGARIAN A1	HL	16			31		25	44	5.82
HUNGARIAN A1	SL	19		5	32	5	53	5	5.21
ICELANDIC A1	HL	1					100		6.00
ICELANDIC A1	SL	4				50	25	25	5.75
INDONESIAN A1	HL	65			2	29	46	23	5.90
INDONESIAN A1	SL	92			5	23	36	36	6.03
ITALIAN A1	HL	146		10	45	31	13	1	4.50
ITALIAN A1	SL	49	2	16	37	22	14	8	4.50
JAPANESE A1	HL	106				12	40	48	6.36
JAPANESE A1	SL	53	2		6	11	32	49	6.18
KOREAN A1	HL	70				3	30	67	6.64
KOREAN A1	SL	73				1	23	75	6.68
LATVIAN A1	HL	32			3	38	38	22	5.84
LATVIAN A1	SL	4				25	50	25	6.00
LITHUANIAN A1	HL	15				13	60	27	6.14
LITHUANIAN A1	SL	31		3		13	58	26	6.04
MACEDONIAN A1	HL	19					47	53	6.53
MACEDONIAN A1	SL	5					20	80	6.80
MALAY A1	HL	12			25	42	17	17	5.31
MALAY A1	SL	438				1	31	38	4.57
MAORI A1	SL	1					100		6.00
MODERN GREEK A1	HL	176			9	41	39	11	5.52
MODERN GREEK A1	SL	98		2	13	34	36	15	5.49
MONGOLIAN A1	SL	5				20	60	20	6.00
NEPALI A1	SL	1						100	7.00
NORWEGIAN A1	HL	227		3	15	24	36	22	5.59
NORWEGIAN A1	SL	85		4	20	45	27	5	5.14
ORIYA A1	SL	1					100		6.00
OROMO A1	SL	1						100	7.00
PASHTO A1	SL	1					100		6.00
PERSIAN A1	HL	4			75		25		4.50
PERSIAN A1	SL	19			37	37	26		4.89
PILIPINO A1	HL	8				38	50	13	5.81
PILIPINO A1	SL	3				33		67	6.34
POLISH A1	HL	149	1	9	23	39	26	3	4.93
POLISH A1	SL	215	1	5	9	39	40	6	5.30
PORTUGUESE A1	HL	72		1	36	39	21	3	4.89
PORTUGUESE A1	SL	78	3	5	13	42	28	9	5.14
ROMANIAN A1	HL	14				57	29	14	5.57
ROMANIAN A1	SL	6			33		33	33	5.61
RUSSIAN A1	HL	36			8	28	36	28	5.84
RUSSIAN A1	SL	87		1	17	44	26	11	5.24
SERBIAN A1	HL	2						100	7.00
SERBIAN A1	SL	11				18	27	55	6.37
SESOTHO A1	HL	18				56	44		5.44
SESOTHO A1	SL	20				20	70	10	5.90
SHONA A1	SL	1					100		6.00
SINHALESE A1	SL	1				100			5.00
SLOVAK A1	HL	14				14	21	64	6.44
SLOVAK A1	SL	33		3		12	30	55	6.34

SLOVENE A1	HL	39					5	54	41	6.36
SLOVENE A1	SL	6						100		6.00
SPANISH A1	HL	1,826	1	8	34	34	20	4	4	4.80
SPANISH A1	SL	353		5	24	37	27	7	7	5.07
SWAHILI A1	HL	2						50	50	6.50
SWAHILI A1	SL	12			33	33	25	8	8	5.03
SWEDISH A1	HL	393		1	9	38	39	13	13	5.54
SWEDISH A1	SL	285	0	1	8	39	41	11	11	5.53
TAMIL A1	SL	1							100	7.00
TELEGU A1	SL	2			50		50			5.00
THAI A1	HL	16				44	50	6	6	5.62
THAI A1	SL	35			6	31	57	6	6	5.63
TIBETAN A1	SL	3						100		6.00
TONGA A1	SL	1				100				5.00
TURKISH A1	HL	117		3	5	26	41	25	25	5.80
TURKISH A1	SL	117	1	2	10	25	38	25	25	5.76
UKRAINIAN A1	SL	5						80	20	6.20
URDU A1	SL	6					50	50		5.50
VIETNAMESE A1	HL	8						13	88	6.94
VIETNAMESE A1	SL	40					5	43	53	6.54
WELSH A1	SL	2						50	50	6.50
GROUP 1 TOTAL		38,448	0.00	0.72	4.47	28.27	38.97	21.66	6.26	4.97

Subject	Level	Number of candidates	Percentage of candidates awarded grades							Mean grade
			1	2	3	4	5	6	7	
GROUP 2										
ARABIC A2	HL	53					13	70	17	6.04
ARABIC A2	SL	26					4	69	27	6.23
ARABIC AB INITIO	SL	76			8	18	33	28	13	5.20
ARABIC B	HL	167			1	5	11	43	40	6.16
ARABIC B	SL	93				3	9	62	26	6.11
BENGALI B	HL	1						100		6.00
BENGALI B	SL	2						100		6.00
CANTONESE B	HL	10				20		20	60	6.20
CANTONESE B	SL	6					17	33	50	6.33
CHINESE A2	HL	51					16	63	22	6.12
CHINESE A2	SL	64					11	66	23	6.12
CLASSICAL GREEK	HL	5						20	80	6.80
CLASSICAL GREEK	SL	2				50	50			4.50
DANISH B	HL	48			2	15	17	44	23	5.76
DANISH B	SL	45			9	13	22	31	24	5.43
DUTCH A2	HL	49				16	57	22	4	5.09
DUTCH A2	SL	38			5	24	45	18	8	5.00
DUTCH B	HL	62				15	34	39	13	5.55
DUTCH B	SL	46			2	15	24	39	20	5.60
ENGLISH A2	HL	3,479			0	10	43	41	6	5.43
ENGLISH A2	SL	1,263			0	9	37	45	9	5.54
ENGLISH B	HL	3,631		0	1	8	26	53	11	5.60
ENGLISH B	SL	1,525		0	2	8	20	54	16	5.74

FINNISH B	HL	29					17	41	41	6.18		
FINNISH B	SL	30			3	3	7	43	43	6.15		
FRENCH A2	HL	204		0	0	13	37	38	11	5.42		
FRENCH A2	SL	319			0	13	49	33	5	5.30		
FRENCH <i>AB INITIO</i>	HL	816	0	3	10	15	29	30	13	5.12		
FRENCH B	HL	1,918	0	2	8	16	25	34	15	5.26		
FRENCH B	SL	7,188	0	2	9	20	35	22	12	5.02		
GERMAN A2	HL	179				1	7	23	39	31	5.97	
GERMAN A2	SL	80					9	45	40	6	5.43	
GERMAN <i>AB INITIO</i>	SL	300	0	1	10	23	24	25	16	5.06		
GERMAN B	HL	523		0	4	12	20	39	24	5.62		
GERMAN B	SL	1,163	0	0	6	25	24	31	13	5.15		
HEBREW B	SL	27		4	7	4	11	19	56	6.06		
HINDI <i>AB INITIO</i>	SL	17				6	18	24	41	12	5.40	
HINDI B	HL	47					9	43	40	9	5.54	
HINDI B	SL	118					5	17	45	33	6.06	
INDONESIAN <i>AB INITIO</i>	SL	8						38	38	25	5.93	
INDONESIAN B	HL	37					11	5	49	35	6.08	
INDONESIAN B	SL	26					4	19	35	42	6.15	
ITALIAN A2	HL	13					8	69	23		5.15	
ITALIAN A2	SL	3					100				4.00	
ITALIAN <i>AB INITIO</i>	SL	370	1	7	22	26	19	15	11	4.47		
ITALIAN B	HL	122		1	5	11	18	33	33	5.80		
ITALIAN B	SL	182		4	22	29	12	20	14	4.68		
JAPANESE A2	HL	76						20	49	32	6.18	
JAPANESE A2	SL	33					6	30	55	9	5.67	
JAPANESE <i>AB INITIO</i>	SL	249		4	14	19	25	20	17	4.90		
JAPANESE B	HL	36				14	17	8	44	17	5.33	
JAPANESE B	SL	220		2	16	28	23	18	14	4.85		
KOREAN B	HL	8				13			38	50	6.17	
KOREAN B	SL	49					2	8	41	49	6.37	
LATIN	HL	130	2	18	23	13	17	15	12	4.18		
LATIN	SL	442	5	16	14	29	18	10	8	4.01		
MALAY <i>AB INITIO</i>	SL	47				4	11	38	38	9	5.37	
MANDARIN <i>AB INITIO</i>	SL	161				4	4	27	40	25	5.78	
MANDARIN B	HL	242					2	14	52	31	6.07	
MANDARIN B	SL	404					3	14	17	32	34	5.80
MODERN GREEK A2	HL	18				11	28	33	17	11	4.89	
MODERN GREEK A2	SL	24				4	8	33	42	13	5.52	
MODERN GREEK B	SL	15						7	47	47	6.46	
NORWEGIAN A2	HL	10						10	60	30	6.20	
NORWEGIAN A2	SL	6						17	33	50	6.33	
NORWEGIAN B	HL	59				3	8	15	51	22	5.76	
NORWEGIAN B	SL	25				8	4	4	32	52	6.16	
PILIPINO A2	HL	17							18	82	6.82	
PILIPINO A2	SL	14							43	57	6.57	
PORTUGUESE A2	HL	81						27	58	15	5.88	
PORTUGUESE A2	SL	28						21	54	25	6.04	
PORTUGUESE B	HL	47						21	43	36	6.15	
PORTUGUESE B	SL	33				3	15	36	27	18	5.37	

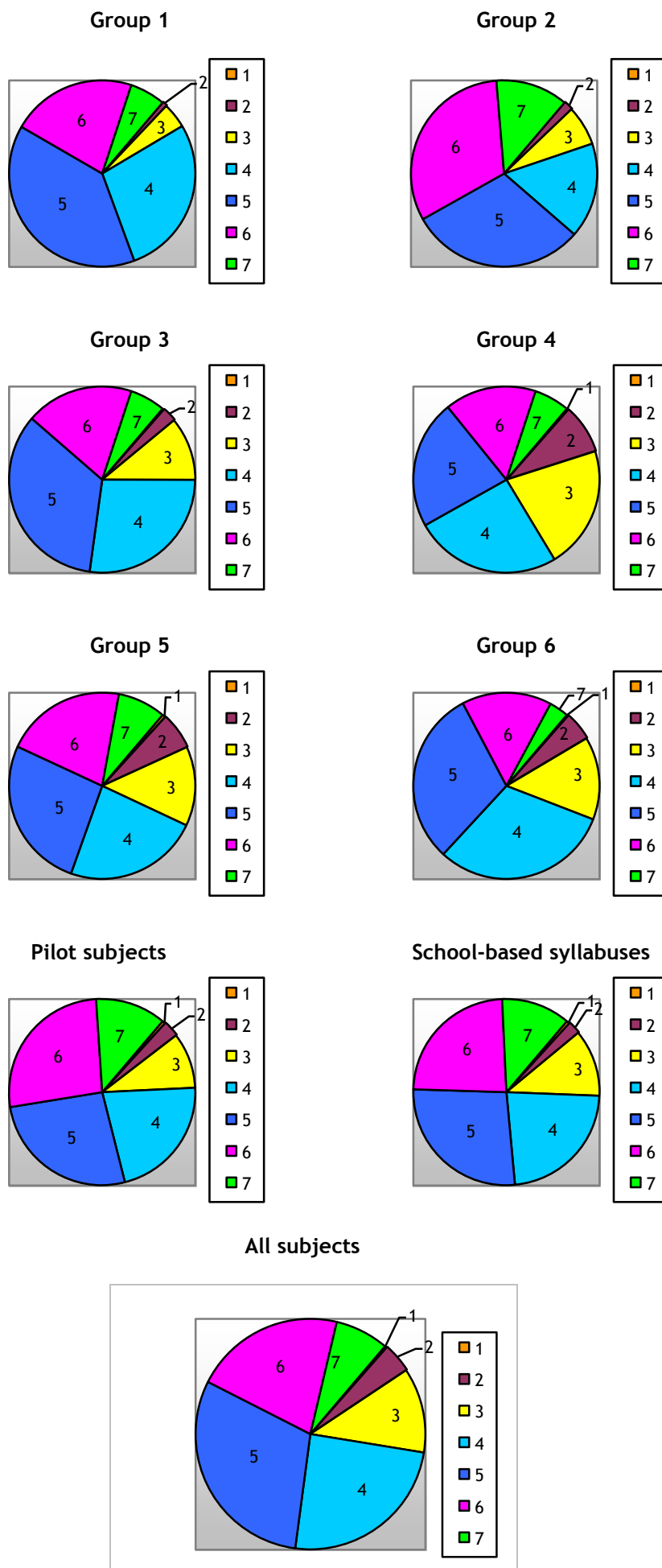
RUSSIAN A2	HL	7					14	29	57	6.43	
RUSSIAN A2	SL	6					33	50	17	5.84	
RUSSIAN <i>AB INITIO</i>	SL	35	3			23	14	46	14	5.39	
RUSSIAN B	HL	39			8	3	8	54	28	5.96	
RUSSIAN B	SL	61			5	25	21	20	30	5.50	
SPANISH A2	HL	353		1	3	20	35	34	7	5.19	
SPANISH A2	SL	194		2	11	29	19	34	5	4.87	
SPANISH <i>AB INITIO</i>	SL	1,577	0	2	9	24	28	26	12	5.07	
SPANISH B	HL	2,453	0	1	4	13	19	37	25	5.58	
SPANISH B	SL	9,451	0	3	12	23	37	19	7	4.82	
SWAHILI <i>AB INITIO</i>	SL	24		4	13	17	13	21	33	5.37	
SWEDISH A2	HL	23					13	26	48	13	5.61
SWEDISH A2	SL	19						21	68	11	5.90
SWEDISH B	HL	84		2	7	4	18	25	44	5.89	
SWEDISH B	SL	106		3	10	8	26	42	10	5.20	
THAI A2	HL	23						70	30	6.30	
THAI A2	SL	26						8	50	42	6.34
THAI B	HL	10						10	60	30	6.20
THAI B	SL	14						7	43	50	6.43
URDU B	HL	1						100			5.00
URDU B	SL	4						25	75		5.75
GROUP 2 TOTAL		41,445	0.07	1.70	6.87	16.65	30.66	31.48	12.64	5.21	

Subject	Level	Number of candidates	Percentage of candidates awarded grades							Mean grade
			1	2	3	4	5	6	7	
GROUP 3										
BUSINESS & MANAGEMENT	HL	1,841	0	3	14	28	31	20	4	4.63
BUSINESS & MANAGEMENT	SL	1,919	0	3	14	22	32	22	8	4.84
ECONOMICS	HL	4,313	0	1	9	18	34	25	15	5.26
ECONOMICS	SL	3,871	0	1	9	20	32	26	11	5.02
GEOGRAPHY	HL	1,829		2	6	26	35	21	10	4.97
GEOGRAPHY	SL	1,394	0	4	13	28	30	17	8	4.67
HISTORY OF AFRICA	HL	115		5	17	22	36	15	6	4.61
HISTORY OF AMERICAS	HL	13,192	0	2	13	33	37	13	2	4.52
HISTORY OF ASIA/ MIDDLE EAST	HL	146		1	1	16	37	36	8	5.26
HISTORY OF ASIA/OCEANIA	HL	308		0	3	17	37	30	12	5.26
HISTORY OF EUROPE	HL	7,470		1	8	23	37	23	8	4.97
HISTORY	SL	3,530		1	8	25	39	22	5	4.88
ISLAMIC HISTORY	HL	42			5	7	43	36	10	5.44
ISLAMIC HISTORY	SL	53			2	17	38	30	13	5.35
ITGS	HL	384	0	1	11	38	37	11	1	4.45
ITGS	SL	1,670		1	11	34	39	14	2	4.64
PHILOSOPHY	HL	800	0	1	6	16	31	35	11	5.26
PHILOSOPHY	SL	915		1	11	21	31	25	11	5.01
PSYCHOLOGY	HL	2,191	1	6	9	27	37	17	4	4.63
PSYCHOLOGY	SL	5,455	2	10	17	36	23	9	2	4.00
SOCIAL & CULTURAL ANTHROPOLOGY	HL	226		6	17	18	27	27	5	4.67

SOCIAL & CULTURAL ANTHROPOLOGY	SL	814	0	0	5	25	43	23	4	4.96
GROUP 3 TOTAL		52,478	0.25	2.66	10.98	27.16	34.34	18.66	6.03	4.73
Subject	Level	Number of candidates	Percentage of candidates awarded grades							Mean grade
			1	2	3	4	5	6	7	
GROUP 4										
BIOLOGY	HL	13,331	0	9	24	27	21	15	4	4.21
BIOLOGY	SL	8,158	0	7	25	27	23	13	5	4.25
CHEMISTRY	HL	6,625	0	5	16	22	24	22	11	4.75
CHEMISTRY	SL	7,163	1	13	21	22	21	15	5	4.08
DESIGN TECHNOLOGY	HL	312		5	9	20	34	25	7	4.86
DESIGN TECHNOLOGY	SL	196		6	24	26	30	11	3	4.25
ENVIRONMENTAL SYSTEMS	SL	2,772	1	7	17	27	26	17	5	4.41
PHYSICS	HL	4,798	0	6	18	25	24	17	10	4.58
PHYSICS	SL	6,583	1	11	22	28	20	14	5	4.20
GROUP 4 TOTAL		49,938	0.33	8.54	21.35	25.51	22.28	15.82	6.01	4.32
Subject	Level	Number of candidates	Percentage of candidates awarded grades							Mean grade
			1	2	3	4	5	6	7	
GROUP 5										
COMPUTER SCIENCE	HL	474	2	9	16	20	22	23	8	4.52
COMPUTER SCIENCE	SL	867	3	13	18	26	25	12	3	4.05
FURTHER MATHEMATICS	SL	89	1	17	11	19	17	18	17	4.56
MATHEMATICAL STUDIES	SL	14,381	1	6	14	28	30	18	5	4.60
MATHEMATICS	HL	6,843	1	9	14	23	24	19	10	4.57
MATHEMATICS	SL	17,022	0	5	14	20	25	24	11	4.78
GROUP 5 TOTAL		39,676	0.63	6.30	14.10	23.55	26.59	20.68	8.46	4.66
Subject	Level	Number of candidates	Percentage of candidates awarded grades							Mean grade
			1	2	3	4	5	6	7	
GROUP 6										
MUSIC	HL	580		1	12	29	28	26	4	4.78
MUSIC COMPOSITION	SL	114		1	11	25	29	26	8	4.92
MUSIC GROUP PERFORMANCE	SL	648	1	1	9	21	39	25	4	4.87
MUSIC SOLO PERFORMANCE	SL	523		2	15	29	36	16	2	4.55
THEATRE ARTS	HL	1,575		1	14	33	34	15	3	4.57
THEATRE ARTS	SL	850		10	36	30	16	6	1	3.71
VISUAL ARTS	HL	4,012	0	4	11	32	32	17	4	4.59
VISUAL ARTS OPTION A	SL	2,304	0	6	13	35	31	12	3	4.39
VISUAL ARTS OPTION B	SL	452	3	30	28	17	12	9	2	3.43
GROUP 6 TOTAL		11,058	0.18	5.05	14.59	30.98	30.39	15.49	3.28	4.46

Subject	Level	Number of candidates	Percentage of candidates awarded grades							Mean grade
			1	2	3	4	5	6	7	
PILOT SUBJECTS										
DANCE	HL	63			6	8	17	38	30	5.73
DANCE	SL	24			17	25	21	29	8	4.86
ECOSYSTEMS & SOCIETIES	SL	190	1	3	9	25	28	27	7	4.85
FILM	HL	179		4	16	25	31	12	12	4.67
FILM	SL	57		11	18	42	18	12		4.06
MATHEMATICS CASE*	HL	40	3	3	5	23	25	35	8	5.07
TEXT & PERFORMANCE	SL	74			1	15	38	36	9	5.32
WORLD CULTURES	SL	67				7	15	48	30	6.01
*CASE = COMPUTER ALGEBRIC SYSTEMS ENABLED										
PS TOTAL		694	0.45	2.93	9.60	21.93	26.35	26.41	12.33	4.99
SCHOOL-BASED SYLLABUSES										
Subject	Level	Number of candidates	Percentage of candidates awarded grades							Mean grade
			1	2	3	4	5	6	7	
ART HISTORY	SL	108		3	30	43	19	6		3.99
BEGINNERS NYNORSK	SL	13			15	15	15	8	46	5.50
CHILE & PACIFIC BASIN	SL	10				60	20	20		4.60
CHINESE STUDIES	SL	31			3	10	26	29	32	5.77
CLASSICAL GREEK & ROMAN STUDIES	SL	18					22	61	17	5.95
ELECTRONICS	SL	7				14		43	43	6.15
EUROPEAN STUDIES	SL	11				18	64	18		5.00
FOOD SCIENCE & TECHNOLOGY	SL	18	6	11	6	17	17	33	11	4.74
HISTORICAL & CONTEMPORARY BRAZILIAN STUDIES	SL	60		3	15	38	27	12	5	4.45
HUMAN RIGHTS	SL	23				13	30	43	13	5.51
PEACE & CONFLICT STUDIES	SL	57			4	12	28	33	23	5.59
POLITICAL THOUGHT	SL	17				6	18	41	35	6.05
SCIENCE, TECHNOLOGY & SOCIETY	SL	36			11	47	36	6		4.37
SOCIAL STUDIES	SL	12			25	17	33	25		4.58
TURKISH SOCIAL STUDIES	SL	71		7	23	24	15	23	8	4.48
WORLD POLITICS	SL	43		2	2	14	51	19	12	5.19
WORLD RELIGIONS	SL	100	3	1	2	8	33	36	17	5.43
SBS TOTAL		635	0.64	2.18	11.62	23.18	26.96	23.46	12.10	4.93
ALL SUBJECTS TOTAL		234,372	0.26	4.15	12.09	24.67	30.34	21.04	7.55	4.74

Graph 21.1 Grade distribution by subject group May 2006



22 Diploma and retake candidates (D+R): distribution of points totals May 2006

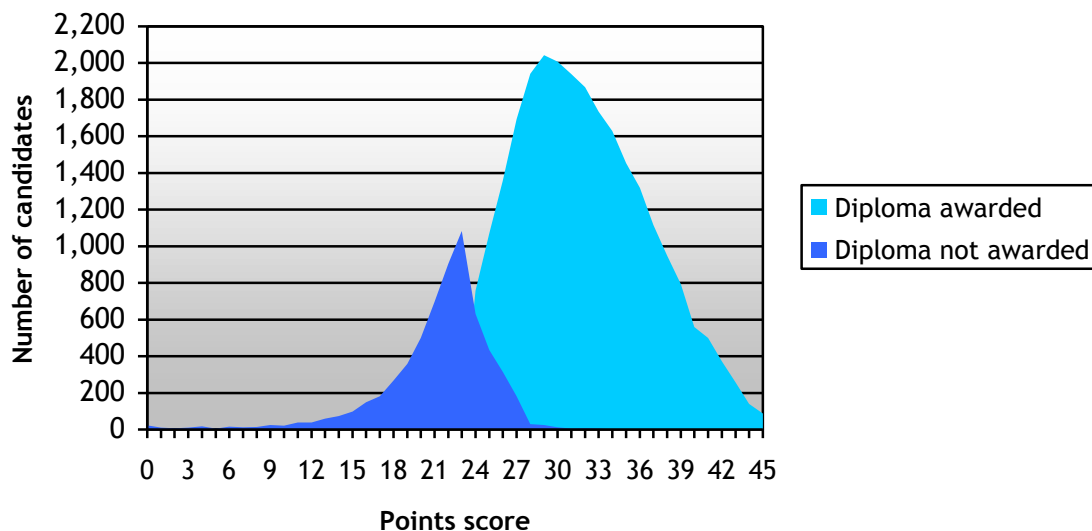
Total Points	Diploma awarded		Diploma not awarded		Cumulative
	Number of candidates	Percentage of candidates	Number of candidates	Percentage of candidates	
0			23	0.07%	0.07%
1			10	0.03%	0.10%
2			7	0.02%	0.12%
3			11	0.03%	0.15%
4			18	0.06%	0.21%
5			6	0.02%	0.23%
6			15	0.05%	0.28%
7			13	0.04%	0.32%
8			14	0.04%	0.36%
9			25	0.08%	0.44%
10			21	0.07%	0.51%
11			39	0.12%	0.63%
12			38	0.12%	0.75%
13			59	0.19%	0.94%
14			74	0.23%	1.17%
15			97	0.30%	1.48%
16			148	0.46%	1.94%
17			181	0.57%	2.51%
18			268	0.84%	3.35%
19			359	1.13%	4.48%
20			500	1.57%	6.05%
21			697	2.19%	8.23%
22			906	2.84%	11.08%
23			1,083	3.40%	14.48%
24	758	2.38%	631	1.98%	18.44%
25	1,072	3.37%	433	1.36%	23.56%
26	1,357	4.26%	315	0.99%	28.81%
27	1,693	5.32%	181	0.57%	34.70%
28	1,941	6.09%	29	0.09%	40.88%
29	2,043	6.41%	24	0.08%	47.37%
30	2,008	6.30%	13	0.04%	53.72%
31	1,939	6.09%	5	0.02%	59.82%
32	1,868	5.86%	7	0.02%	65.70%
33	1,736	5.45%	5	0.02%	71.17%
34	1,629	5.11%	2	0.01%	76.29%
35	1,454	4.56%	2	0.01%	80.86%
36	1,320	4.14%	1	0.00%	85.01%
37	1,117	3.51%	2	0.01%	88.52%
38	948	2.98%			91.50%
39	793	2.49%			93.99%
40	560	1.76%			95.75%
41	499	1.57%			97.31%
42	372	1.17%			98.48%
43	257	0.81%			99.29%
44	139	0.44%			99.72%
45	88	0.28%			100.00%
	25,591	80.34%	6,262	19.66%	31,853

23 Retake candidates only (R): distribution of points totals May 2006

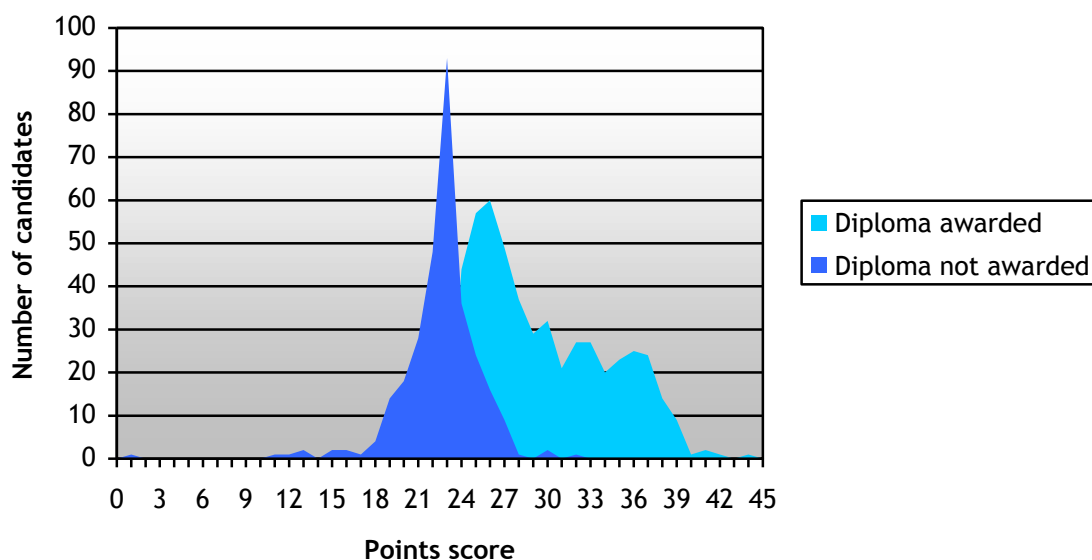
Total Points	Diploma awarded		Diploma not awarded		Cumulative
	Number of candidates	Percentage of candidates	Number of candidates	Percentage of candidates	
0					0.00%
1			1	0.12%	0.12%
2					0.12%
3					0.12%
4					0.12%
5					0.12%
6					0.12%
7					0.12%
8					0.12%
9					0.12%
10					0.12%
11			1	0.12%	0.25%
12			1	0.12%	0.37%
13			2	0.25%	0.62%
14					0.62%
15			2	0.25%	0.87%
16			2	0.25%	1.12%
17			1	0.12%	1.24%
18			4	0.50%	1.73%
19			14	1.73%	3.47%
20			18	2.23%	5.70%
21			28	3.47%	9.17%
22			48	5.95%	15.12%
23			93	11.52%	26.64%
24	44	5.45%	36	4.46%	36.56%
25	57	7.06%	24	2.97%	46.59%
26	60	7.43%	16	1.98%	56.01%
27	49	6.07%	9	1.12%	63.20%
28	37	4.58%	1	0.12%	67.91%
29	29	3.59%			71.50%
30	32	3.97%	2	0.25%	75.71%
31	21	2.60%			78.31%
32	27	3.35%	1	0.12%	81.78%
33	27	3.35%			85.13%
34	20	2.48%			87.61%
35	23	2.85%			90.46%
36	25	3.10%			93.56%
37	24	2.97%			96.53%
38	14	1.73%			98.27%
39	9	1.12%			99.38%
40	1	0.12%			99.50%
41	2	0.25%			99.75%
42	1	0.12%			99.88%
43					99.88%
44	1	0.12%			100.00%
45					100.00%
	503	62.33%	304	37.67%	807

24 Diploma score distribution: diploma and retake candidates (D+R) and retake candidates only (R) May 2006

Graph 24.1 Number of diploma and retake candidates with diplomas awarded and diplomas not awarded per points score May 2006



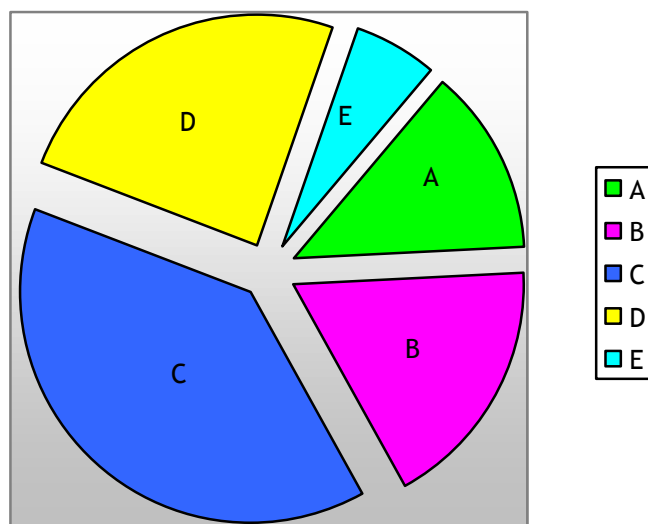
Graph 24.2 Number of retake candidates only with diplomas awarded and diplomas not awarded per points score May 2006



25 Extended essay results May 2006

EE grade awarded per subject group	A	B	C	D	E	Total of candidates awarded grade	Total of all registered candidates	Percentage of candidates awarded grade
Group 1	1,005	1,053	1,674	736	121	4,589	4,639	98.92%
Group 2	377	319	541	341	62	1,640	1,661	98.74%
Group 3	1,797	2,950	6,669	4,265	938	16,619	16,783	99.02%
Group 4	325	636	1,869	1,677	511	5,018	5,066	99.05%
Group 5	113	139	333	236	70	891	902	98.78%
Group 6	353	422	808	315	55	2,033	2,048	99.27%
PS	20	24	40	11	4	99	99	100.00%
Total	3,990	5,543	11,934	7,581	1,761			
Percentage of candidates awarded a particular grade	12.90%	17.93%	38.60%	24.52%	5.70%	30,889	31,198	99.01%

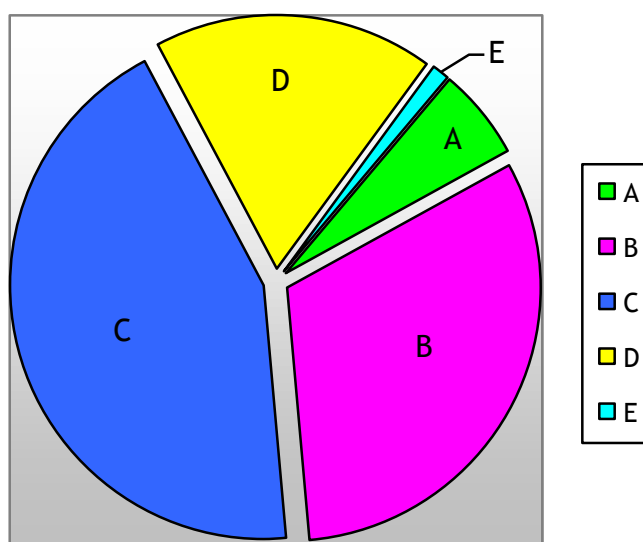
Graph 25.1 Percentage of grades awarded: extended essay May 2006



26 Theory of knowledge results May 2006

TOK grade awarded	A	B	C	D	E	Total of candidates awarded grade	Total of all registered candidates	Percentage of candidates awarded grade
Number of candidates awarded grade	1,829	9,730	13,532	5,462	367	30,920	31,183	99.16%
Percentage of candidates awarded grade	5.92%	31.47%	43.76%	17.66%	1.19%			

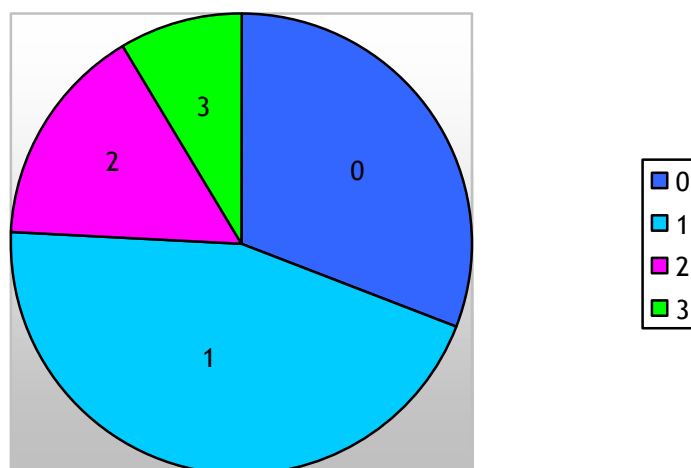
Graph 26.1 Percentage of grades awarded: theory of knowledge May 2006



27 Distribution of additional points May 2002-May 2006

Additional points		0	1	2	3	Total	Mean points
May 2002	Number of candidates awarded	5,714	8,608	3,207	1,877	19,406	1.06
	Percentage of candidates awarded	29.44%	44.36%	16.53%	9.67%	100.00%	
May 2003	Number of candidates awarded	6,873	9,699	3,581	2,033	22,186	1.03
	Percentage of candidates awarded	30.98%	43.72%	16.14%	9.16%	100.00%	
May 2004	Number of candidates awarded	7,443	10,889	3,917	2,344	24,593	1.05
	Percentage of candidates awarded	30.26%	44.28%	15.93%	9.53%	100.00%	
May 2005	Number of candidates awarded	7,884	12,478	4,329	2,683	27,374	1.07
	Percentage of candidates awarded	28.80%	45.58%	15.81%	9.80%	100.00%	
May 2006	Number of candidates awarded	9,714	14,132	4,873	2,734	31,453	1.02
	Percentage of candidates awarded	30.88%	44.93%	15.49%	8.69%	100.00%	

Graph 27.1 Distribution of additional points May 2006



28 Mean points score worldwide May 2002-May 2006

Mean score per examination session	May 2002	May 2003	May 2004	May 2005	May 2006
	30.29	30.26	30.41	30.09	29.89

29 Mean grade worldwide May 2002-May 2006

Mean grade per examination session	May 2002	May 2003	May 2004	May 2005	May 2006
	4.82	4.81	4.82	4.78	4.74

30 Pass rate worldwide May 2002-May 2006

Pass rate per examination session	May 2002	May 2003	May 2004	May 2005	May 2006
	82.37%	81.99%	83.07%	81.40%	80.35%

31 Number of diplomas and bilingual diplomas awarded May 2002-May 2006

Examination session	Number of bilingual diplomas awarded	Number of all diplomas awarded (includes bilingual diplomas)	Percentage of bilingual diplomas in all diplomas awarded
May 2002	5,025	16,185	31.05%
May 2003	5,834	18,384	31.73%
May 2004	6,493	20,621	31.49%
May 2005	7,076	22,564	31.36%
May 2006	7,906	25,592	30.89%