



IB THE **CULTURE**
4-7 of **LEARNING**
OCT **MADRID**
2012

IB Africa, Europe & Middle East
Regional Conference



International Baccalaureate®
Baccalauréat International
Bachillerato Internacional

of **LEARNING**
MADRID
2012

Global Research: Professional Development Quality Assurance

Yi-Chun Chen: Manager of Quality Assurance,
Research Department

Sue Richards: Manager of Teacher Education
Services, Professional Development Department

Research across the IB



IB Professional development

Our goals:

- To design high quality, innovative professional development for educators.
- To provide high quality, relevant, affordable professional development for educators.

IB Professional Development:

types of workshops

Face to face workshops

- 70,000 participants.
- Duration of workshop:
3 days.

Online workshops

- 5,000 participants.
- 350 workshops offered in
2011.
- Duration of workshop:
2 to 8 weeks (about 4-6
hours per week).

IB Professional Development:

number of in-person workshops

	2010	2011
DP	853	963
MYP	516	518
PYP	494	642
Continuum	27	32
Total	1890	2155
IBA	1120	1171
IBAEM	383	503
IBAP	387	481
Total	1890	2155

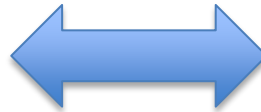
Quality Assurance

- Generally speaking, **Quality assurance (QA)** refers to the planned and systematic activities used to ensure that quality requirements for a product or service will be fulfilled
- Quality assurance framework , simply speaking, is a framework developed to achieve the goal of QA.

PD QAF: Objectives

Internal:

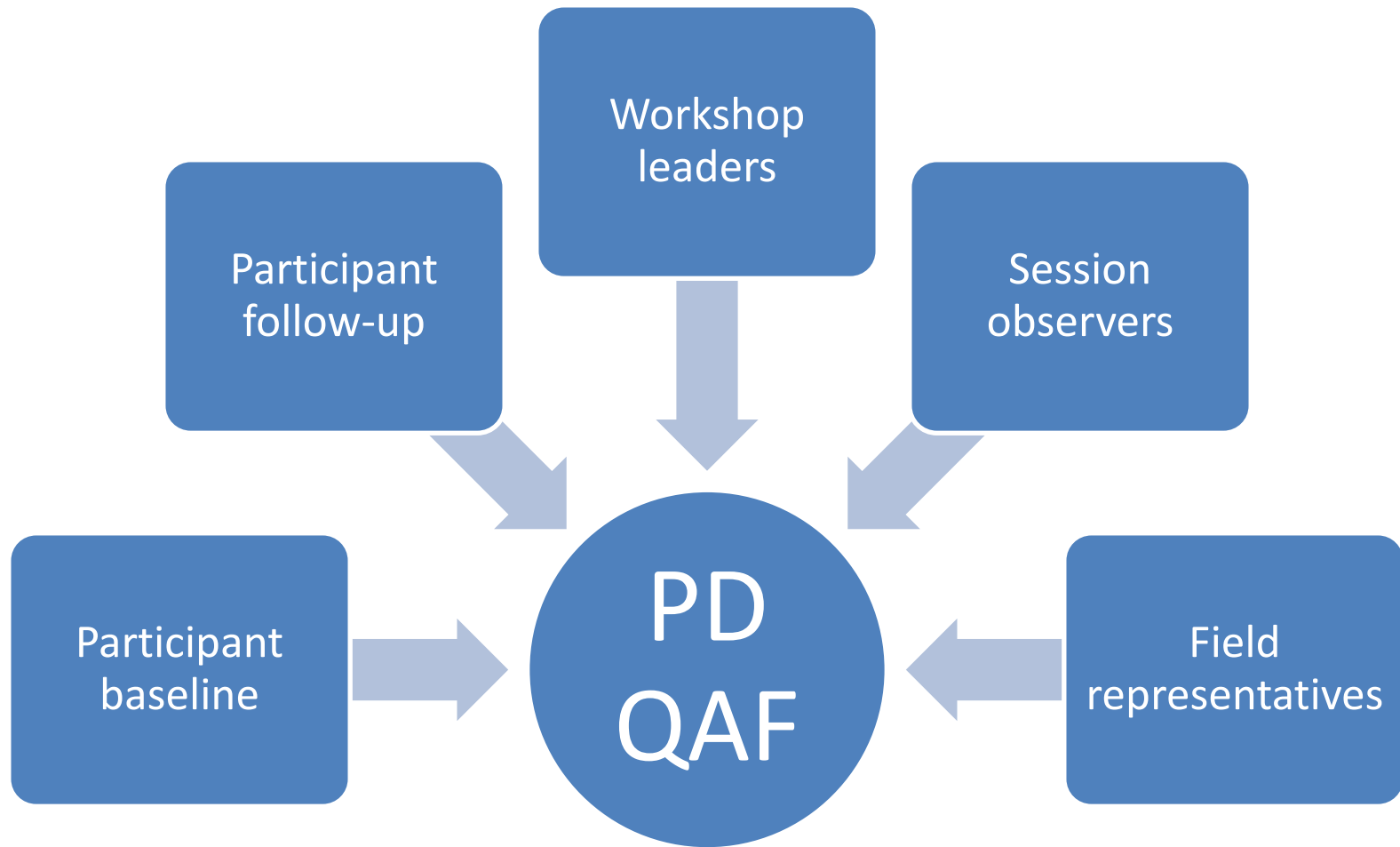
Assure quality and consistency of service and mitigate risk, leading to high quality PD, in turn promoting programme implementation, and the development of *inquiring, knowledgeable and caring young people who help to create a better and more peaceful world through intercultural understanding and respect. (IB mission)*



External:

Through observation, analysis and reflection contribute to the understanding of professional development in education

What goes into the QAF?



PD QAF: *Instruments*

1. Participant baseline survey (WPBS): launching weekly (average 800+ surveys per week)
2. Follow-up participant survey (WPFS): launching weekly, 3 months after the event
3. Workshop leader self-report survey (WLSR): launching weekly
4. Field representative survey (FR): launching according to the assignment
5. Session observer survey (SO): launching according to the assignment, in general, 28 visits per year

PD QAF

Respondents (2010-2012, June)

Number of respondents	Workshop Participant Baseline	
	Survey	Workshop Follow-Up Survey
Total	66,274	37,767
Region		
IBA	37,064	21,519
IBAEM	12,401	7,146
IBAP	16,809	9,101
Programme		
PYP	24,534	13,887
MYP	15,406	8,578
DP	25,185	14,768
Continuum	1,149	527
Category		
1	22,918	13,515
2	24,392	13,803
3	16,139	8,937
combined	2,825	1,486

PD QAF

Respondents (2010-2012, June)

Number of respondents	Field Representative (# of workshops)	Session Observer (# of sessions)	Workshop Leader Self-Report (# of workshops)
Total	2,962	581	5,637
Region			
IBA	2,015	232	3,243
IBAEM	491	192	1,235
IBAP	456	157	159
Programme			
PYP	601	186	2,184
MYP	897	149	1,298
DP	1,403	217	2,056
Continuum	61	29	99
Category			
1	1,217	200	2,198
2	889	196	1,832
3	635	145	1,271
combined	221	40	336

PD QAF

What do we do with all these responses?

Analyze the responses mainly in terms of:

- 1) the demographic information of the workshop participants (e.g. years of teaching experience, highest degree...etc)
- 2) the quality of the workshop(s) (i.e. logistics, format, content, leader(s), activities..etc)
- 3) the needs of workshop participants and leaders (i.e. open-ended survey items, such as further PD)

to help us to understand our stakeholders, monitor the quality of the workshops and plan for further professional development (i.e. data driven decision making).

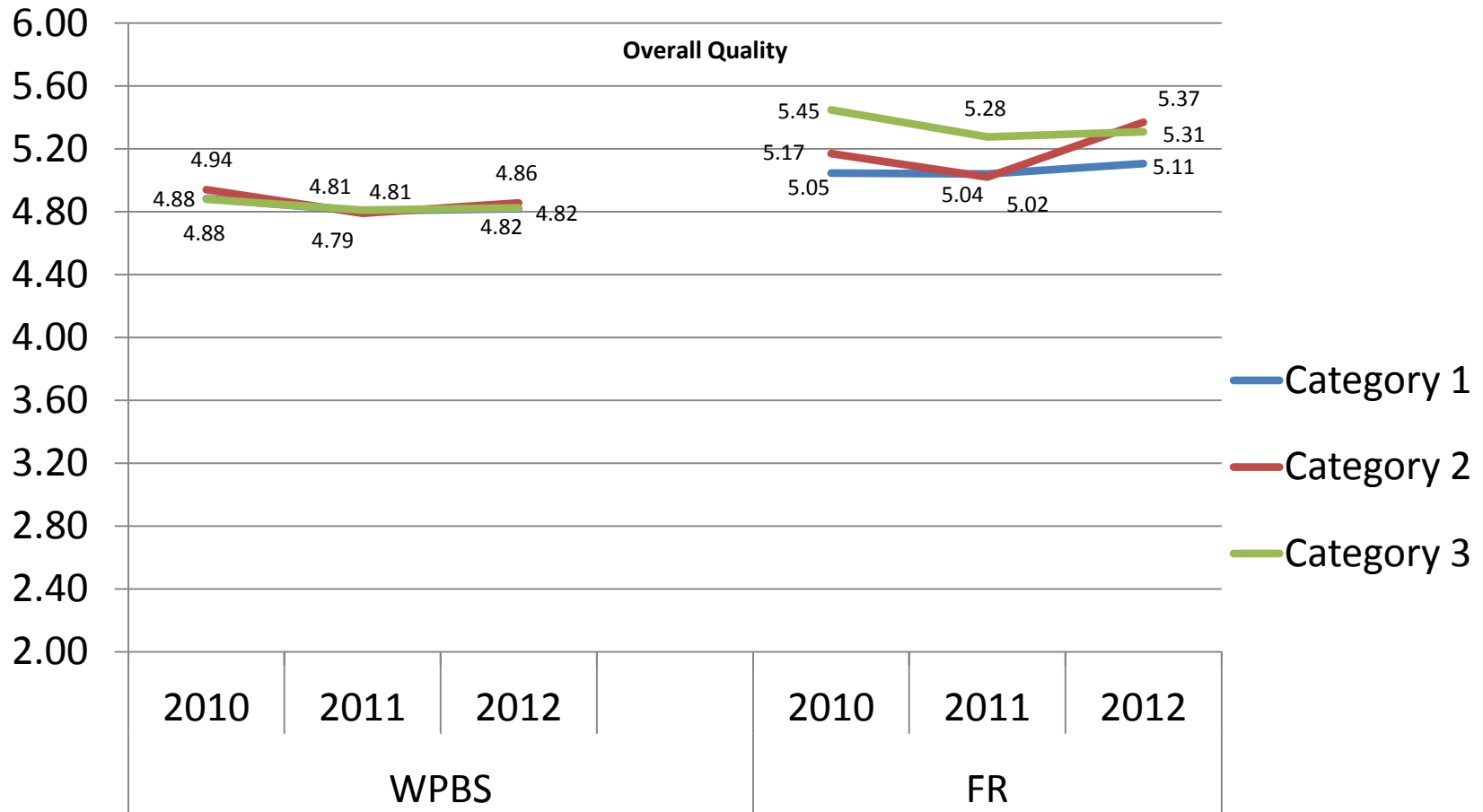
Overall quality of the workshop: *Across five instruments (2010 – June 2012)*

(1) Very poor, (2) Poor, (3) Fair, (4) Good, (5) Very good, (6) Excellent

	Participant baseline	Participant follow-up	Field Representative	Session Observer	Workshop Leader Self- Report
	Top 3 (%)	Top 3 (%)	Top 3 (%)	Top 3 (%)	Top 3 (%)
IBAEM	89.06%	86.01%	94.24%	85.03%	97.70%
All regions	90%	86%	95%	89%	98%

What we have learned from the PD QAF:

Overall quality by category and year



PD Quality Assurance

Participant Baseline Survey

Participant Baseline Survey:

Demographic information

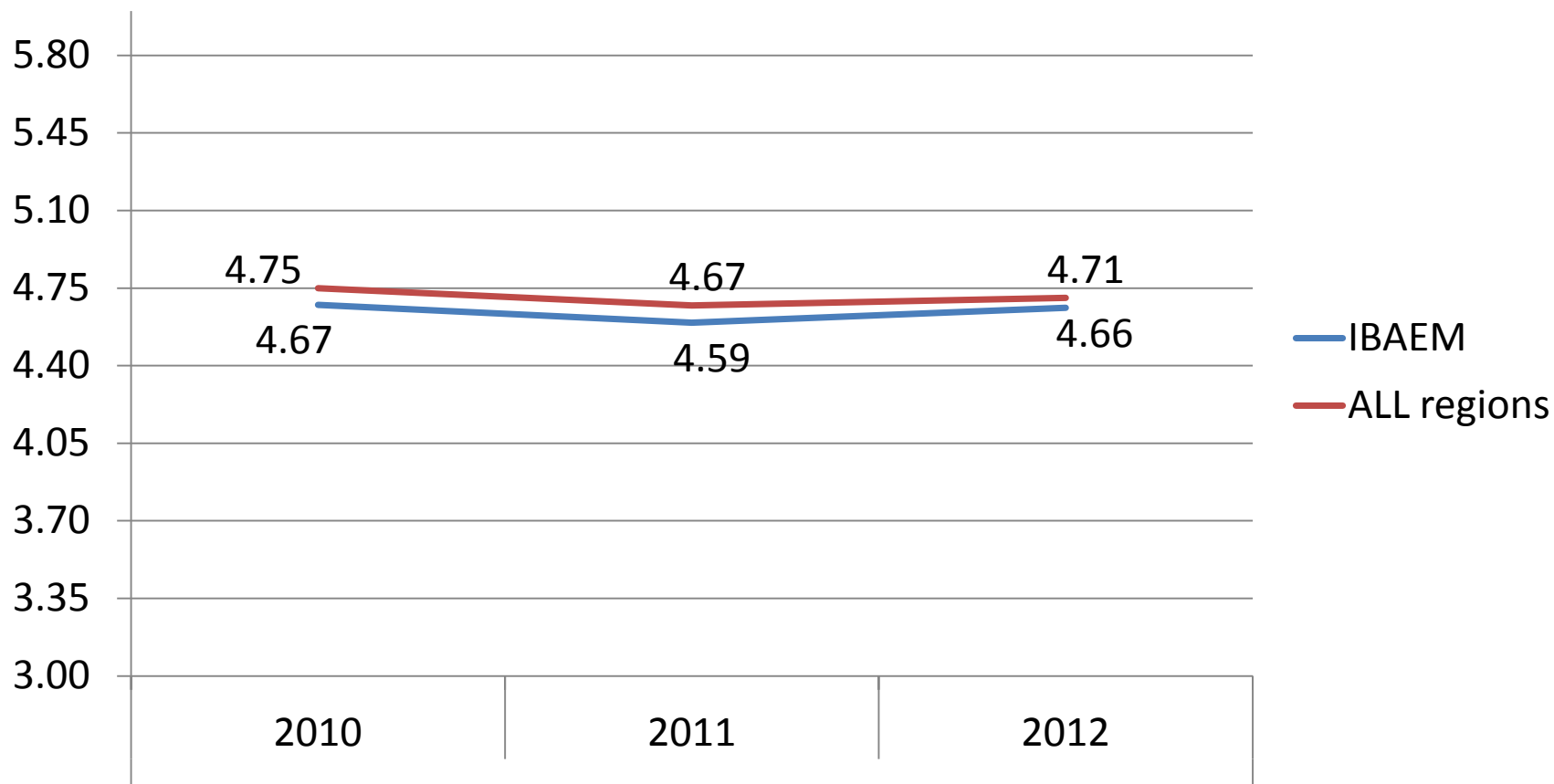
	Gender		Highest degree			
	Female	Male	High School	Associate/ Bachelors/ Certification	Masters	Doctoral/ Post-Doc
IBAEM	68.21%	31.79%	1.9%	47.92%	40.0%	4.81%
All regions	71.30%	28.70%	1.2%	45.10%	45.1%	3.41%

Participant Baseline Survey:

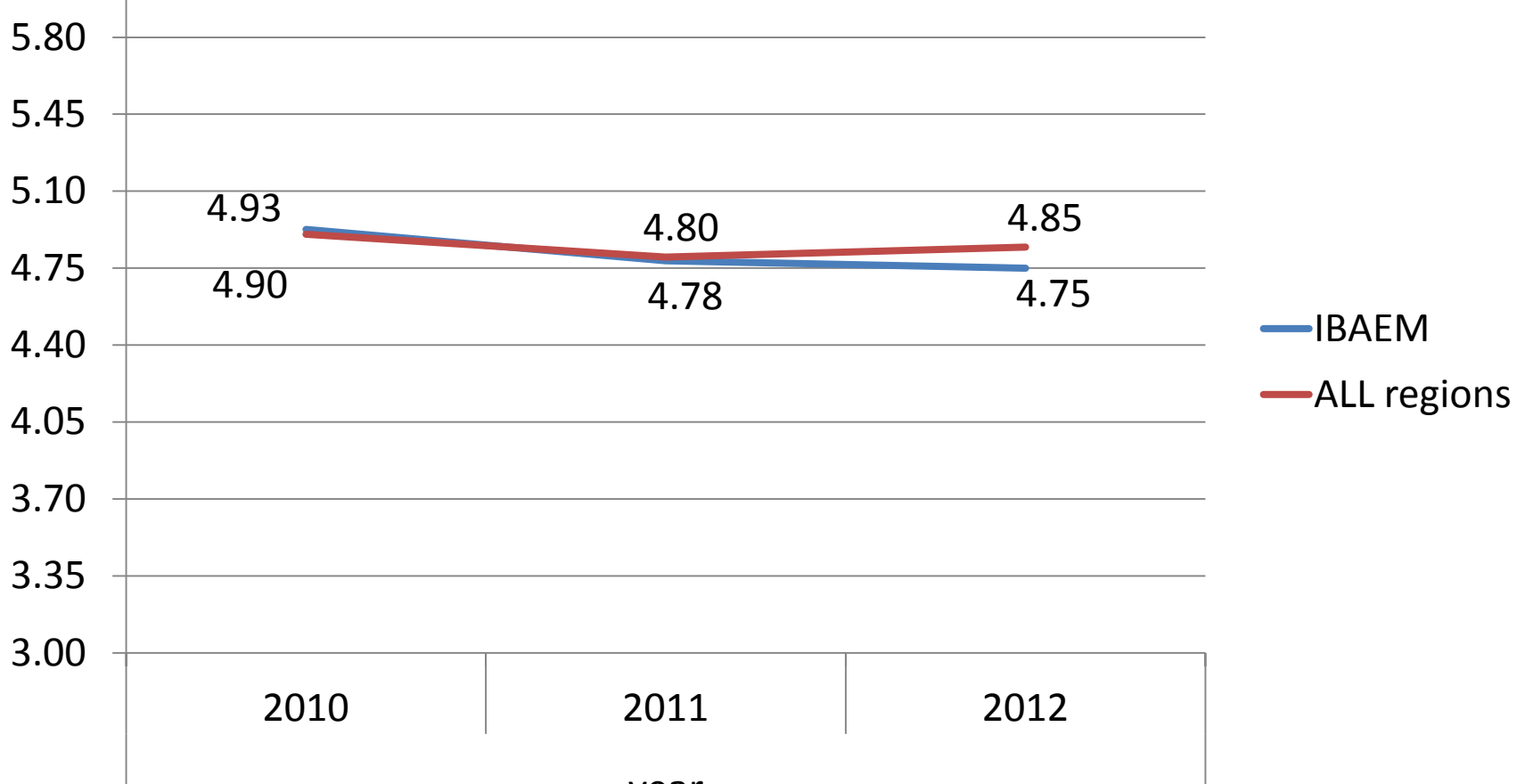
Overall rating items

6 point scale	IBAEM (N=12,401)	All regions (N=66,274)
Overall, please rate the workshop venue 1=Very poor, 2=Poor, 3=Fair, 4=Good, 5=Very good, 6=Excellent	4.63	4.70
Please rate the overall quality of the workshop 1=Very poor, 2=Poor, 3=Fair, 4=Good, 5=Very good, 6=Excellent	4.82	4.85
In general were you satisfied with the workshop 1=Very disappointed, 2=Disappointed, 3=Mildly disappointed, 4=Mildly satisfied, 5=Satisfied, 6= Very satisfied.	5.16	5.14

Participant Baseline Survey: *Overall, please rate the workshop venue (by year, IBAEM)*



Participant Baseline Survey: Overall quality of the workshop (by year, IBAEM)



Participant Baseline Survey:

Overall rating items by programme (IBAEM region only)

6 point scale	DP	MYP	PYP	Cont.
Overall, please rate the workshop venue 1=Very poor, 2=Poor, 3=Fair, 4=Good, 5=Very good, 6=Excellent	4.67	4.69	4.53	4.94
Please rate the overall quality of the workshop 1=Very poor, 2=Poor, 3=Fair, 4=Good, 5=Very good, 6=Excellent	4.92	4.64	4.75	4.68
In general were you satisfied with the workshop 1=Very disappointed, 2=Disappointed, 3=Mildly disappointed, 4=Mildly satisfied, 5=Satisfied, 6=Very satisfied.	5.25	5.01	5.08	4.83

Participant Baseline Survey:

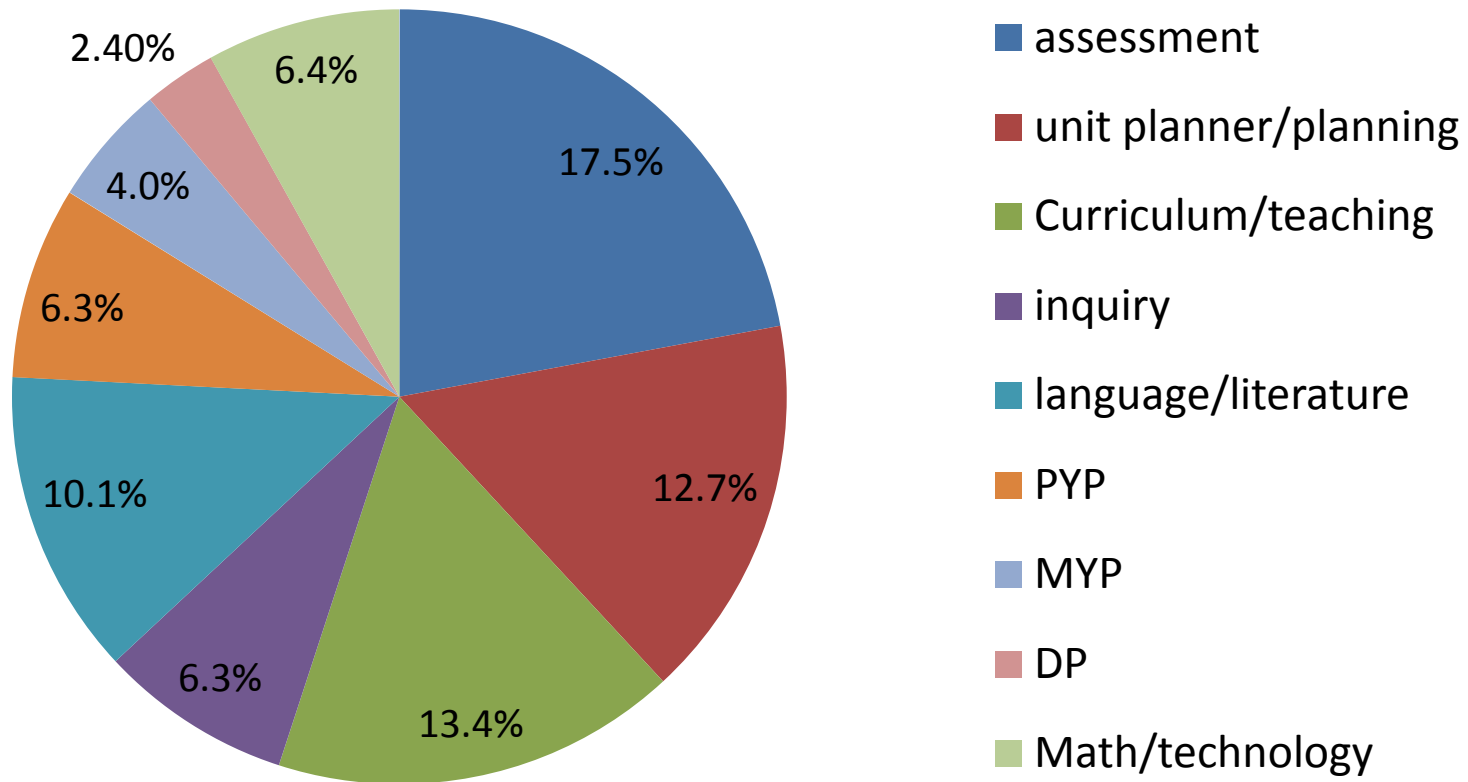
Workshop outcomes

6 point scale :

1=strongly disagree, 2=disagree, 3=somewhat disagree,
4=somewhat agree, 5=agree, 6=strongly agree

	IBAEM (N=12,401)	All regions (N=66,274)
After attending this workshop...	Mean	Mean
I became familiar with how to achieve horizontal and vertical articulation	4.33	4.35
I became familiar with how to integrate international mindedness into the delivery of the IB programme	4.79	4.85
I gained a deeper understanding of the applicable IB standards and practices	4.84	5.00
I became familiar with a variety of teaching and learning strategies appropriate to the IB	4.81	4.85
This workshop increased my depth of knowledge about the topics addressed	5.01	5.13
This workshop has helped me to grow as a professional	5.05	5.13

Participant Baseline Survey: *Future PD interests* (Most frequent phrase/concept, IBAEM)



PD Quality Assurance

Participant Follow-up Survey

Participant Follow Up Survey

6 point scale: 1=strongly disagree, 2=disagree, 3=somewhat disagree, 4=somewhat agree, 5=agree, 6=strongly agree	IBAEM (N=7146)	All regions (N=37767)
	Mean	Mean
I use inquiry based instruction in my classroom	4.95	4.96
I have successfully used resources discussed shared at the workshop	4.85	4.85
Attending the workshop helped me to improve my teaching	4.91	4.90

Participant Follow Up Survey:

IBAEM region only

6 point scale : 1=strongly disagree, 2=disagree, 3=somewhat disagree, 4=somewhat agree, 5=agree, 6=strongly agree	DP (N=3638)	MYP (N=876)	PYP (N=2585)
I use inquiry based instruction in my classroom	4.87	4.90	5.12
I have successfully used resources discussed shared at the workshop	4.93	4.64	4.80
Attending the workshop helped me to improve my teaching	4.91	4.71	4.97

Participant Follow Up Survey: *IBAEM* *region only*

To what extent have you made changes in each of the following practice areas as a result of attending the workshop?	Moderate/ Major change (%)	Major change (%)
Curriculum	77.22	20.82
Assessment	77.53	21.91
Instruction and pedagogy	76.08	15.65
Deepening content knowledge of the subject you teach	73.90	18.98
Leadership and management	73.04	19.11
Meeting diverse student populations needs	75.84	13.37

Reporting on the PD QAF Data

- Workshop leader report
 - Responses from the participant baseline surveys are delivered to workshop leaders as well as IBEN regional managers. On average, producing **166** WSL reports per month [[Sample](#)]
- Event summary report
 - Feedback from participant baseline and the workshop leader self-report surveys are provided in this report and delivered to the PD providers as well as IB staff. On average, producing **100+** reports per month. [[Sample](#)]
- Annual reports
 - Responses from all five instruments [[Sample](#)]
- Random requests / Projects (e.g. scholarly papers for publication)

What we have learned from PD QAF

The QAF helps us make important decisions about our professional development offerings, for example:

- Plan more workshops in 2013 based on the feedback on the future workshops (assessment, unit planner,....etc)
- Event reports (FR part) help us to quickly identify a potential problematic workshop (i.e.....)
- Open-ended answers from participants about workshop leaders help IBEN to manage workshop leaders...etc

Updates on PD QAF instrument(s) and Service: *Revised Participant Baseline Survey*

Add/remove some items to make the questions more aligned with standards & practices

- After attending this workshop, I feel prepared to use the IB programme framework for *teaching and learning*.

Add overall quality rating questions to WSL, Workshop category items, and Workshop activities sections

- Please rate the overall quality of this workshop leader
- Please rate the overall quality of the activities that took place in this workshop

Updates on PD QAF instrument(s) and Service: *Online reporting*

Survey vendor:

Survey Gizmo 2.6 (2010-2012)->Survey Gizmo 3.0 (2011-Sep/Oct, 2012)->Key Survey (July, 2012 - Now)

After Sep. this year, all the workshop leader reports will be delivered in an online format, which will save us a lot of time previously spent on generating and formatting the reports.

- [[Sample](#)]

Where to find research

- <http://www.ibo.org/research/>
 - <http://www.ibo.org/research/policy/programmevalidation/index.cfm>
 - <http://www.ibo.org/research/resources/>
- <http://research.ibo.org>
- <http://blogs.ibo.org/positionpapers/>
- Regional newsletters, Coordinators' Notes, OCC, etc.

Thank you.

Q & A



International Baccalaureate®
Baccalauréat International
Bachillerato Internacional

IB THE CULTURE
4-7 of LEARNING
MADRID
OCT 2012