



International[®]
Baccalaureate

**Diploma Programme Assessment
Philosophy, Principles and Plans**

Jacqueline Harris
October 2008

Philosophy and Principles

The electronic
environment



Recruiting and
training
examiners

Plans
Changes and Developments

Assessment within IB Programmes

Design and function of the assessment should be to **support** the learning process.

Assessment should **reflect** the type of learning we want to achieve.

Assessment should be **tied** to curriculum and teaching.

Assessment should **show** what has happened in terms of the learning process –

*assessment **operationalizes** educational goals.*

Assessment within IB Programmes

promotes *deep learning*
quarrying for gold not lily pad or cappuccino learning
all froth and no substance



reflection
developmental
integrative
self-directive
lifelong



Principles

- authentic performance assessment and higher-order cognitive skills
- criterion-related assessment
- balance between reliability and validity
- variety of assessment components and instruments
 - Reduces bias/addresses objectives*
 - External and internal assessment components
 - Essays, case studies, database, SAQs, MCQs, portfolios, fieldwork, projects, performances, exhibitions
- values the learning process as much as the finished product
- judged against an objective or performance standard

PLANS

Using technology to transform assessment, an enabler not a driver

IBIS (IB information System)

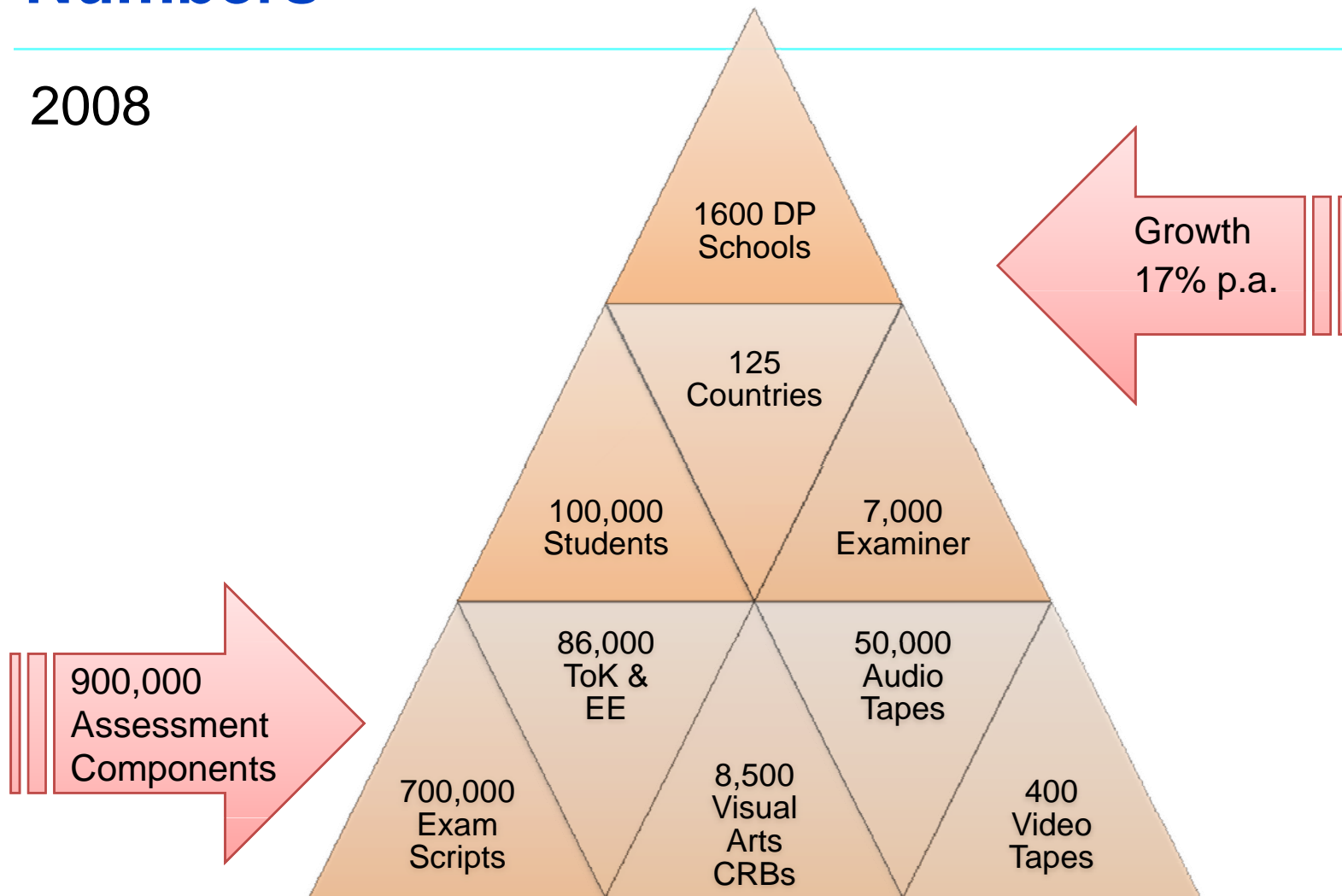
ECMS

- E-assessment
- E-marking
- E-coursework
- Examiner
 - E-recruitment
 - E-training



Numbers

2008



Diploma Assessment (Today)*



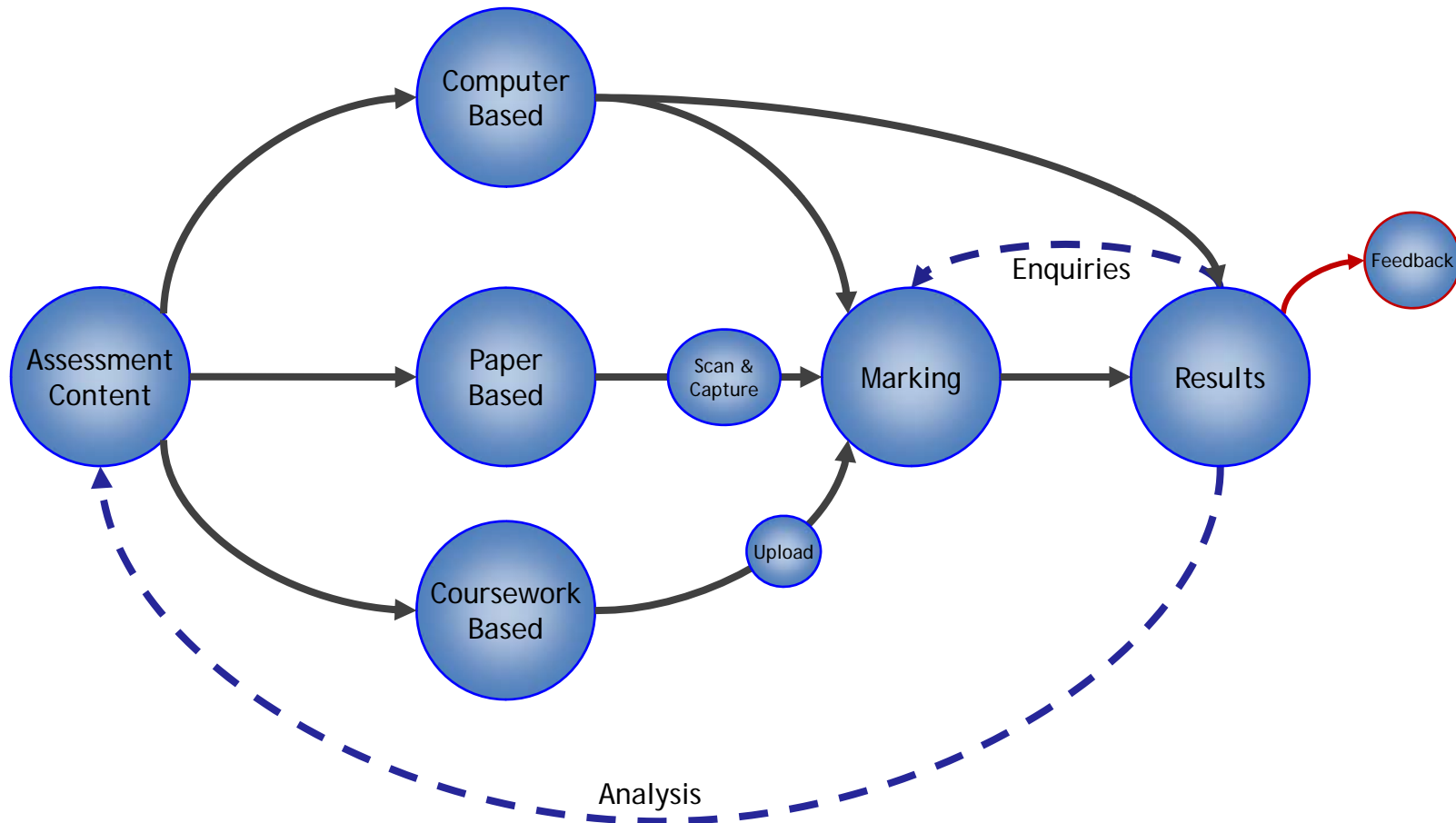
*



- 120,000 examiner allocations
- 410,000 grades to be issued
- 1,200,000 marks

- 30,000 permutations of postal routes
- 74 grade award meetings (339 participants)
- 25,000 queries to help desk

Proposed Solution Development Model



E-assessment

- Building electronic exams
- Delivered to schools electronically
- Candidates respond electronically
- Electronically marked
- 5 trials involving 80 schools since 2004
 - Biology, Chemistry, Physics, English A1, History, ITGS
- May 2008 live pilot Biology HL/SL Paper 1
 - 5 schools 50 candidates
- May 2009 10 papers Biology/History/English A1

E-coursework

- Uses
 - Text – ToK and extended essays/written assignments
 - Audio - languages
 - DVD - film
 - Candidate record books – visual arts
 - Internal Assessment

November 2008 pilot in e-coursework

- Aim is to e-mark 500 theory of knowledge essays
- Coordinators upload essays to an interface in an agreed format
- Essays downloaded by examiners for marking on-screen
- Conventional marking of the same essays will take place in parallel to ensure comparability of marking

E-marking

- Various trials since 2004
 - Scanning/Marking/Comparison of handwritten and WP scripts
- Live pilot November 2008

November 2008 pilot in e-marking examination scripts

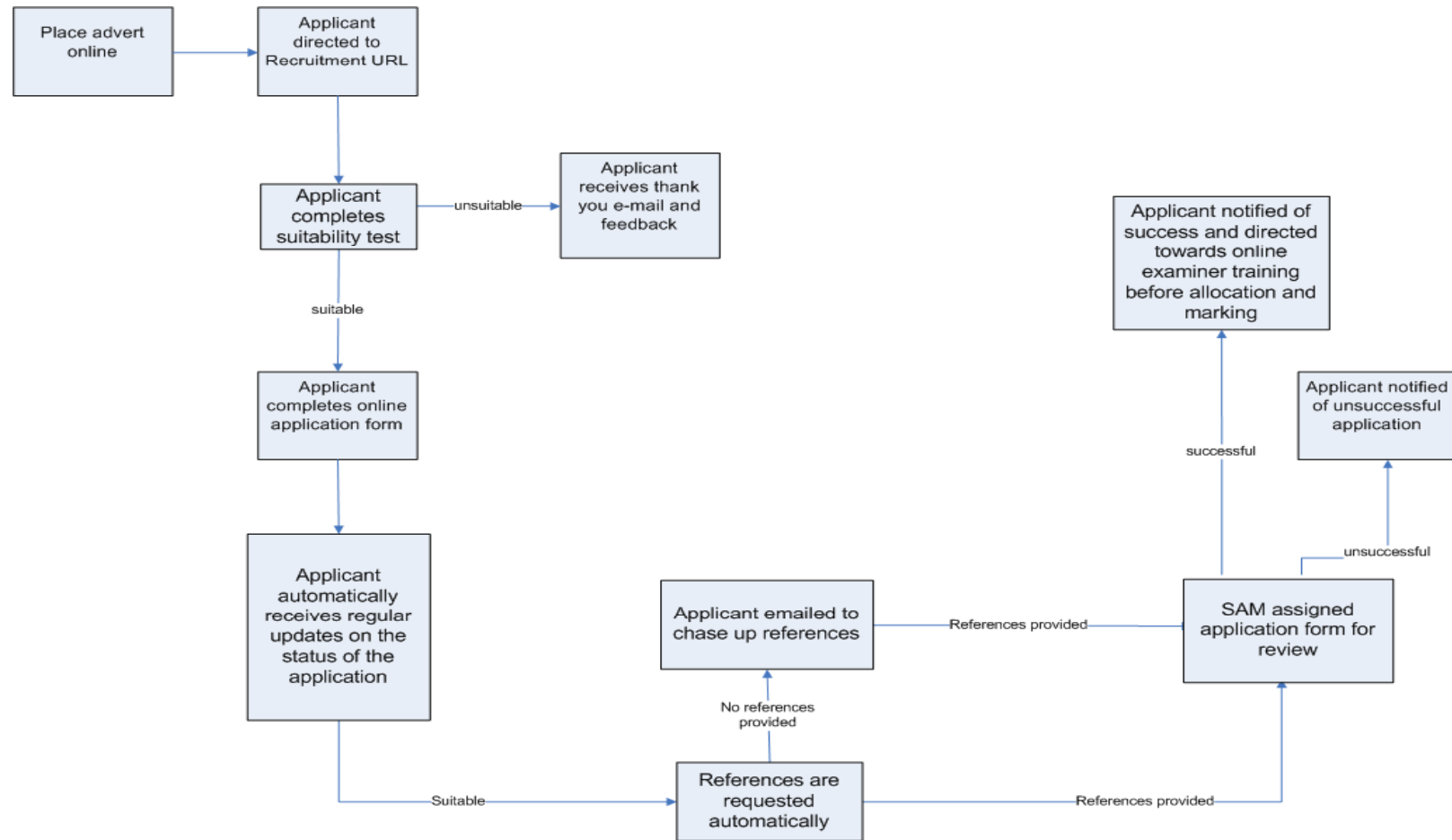
- 800 scripts -
 - Economics SL P1 and P2 Mathematics SL P1 and P2
- Schools send scripts to UK 'scanning centre'
- Scripts sent to examiners for conventional marking (hard copy) and to different group of examiners for e-marking
- Marking will be analysed to determine comparability

Examiner recruitment - Why be an IB examiner?

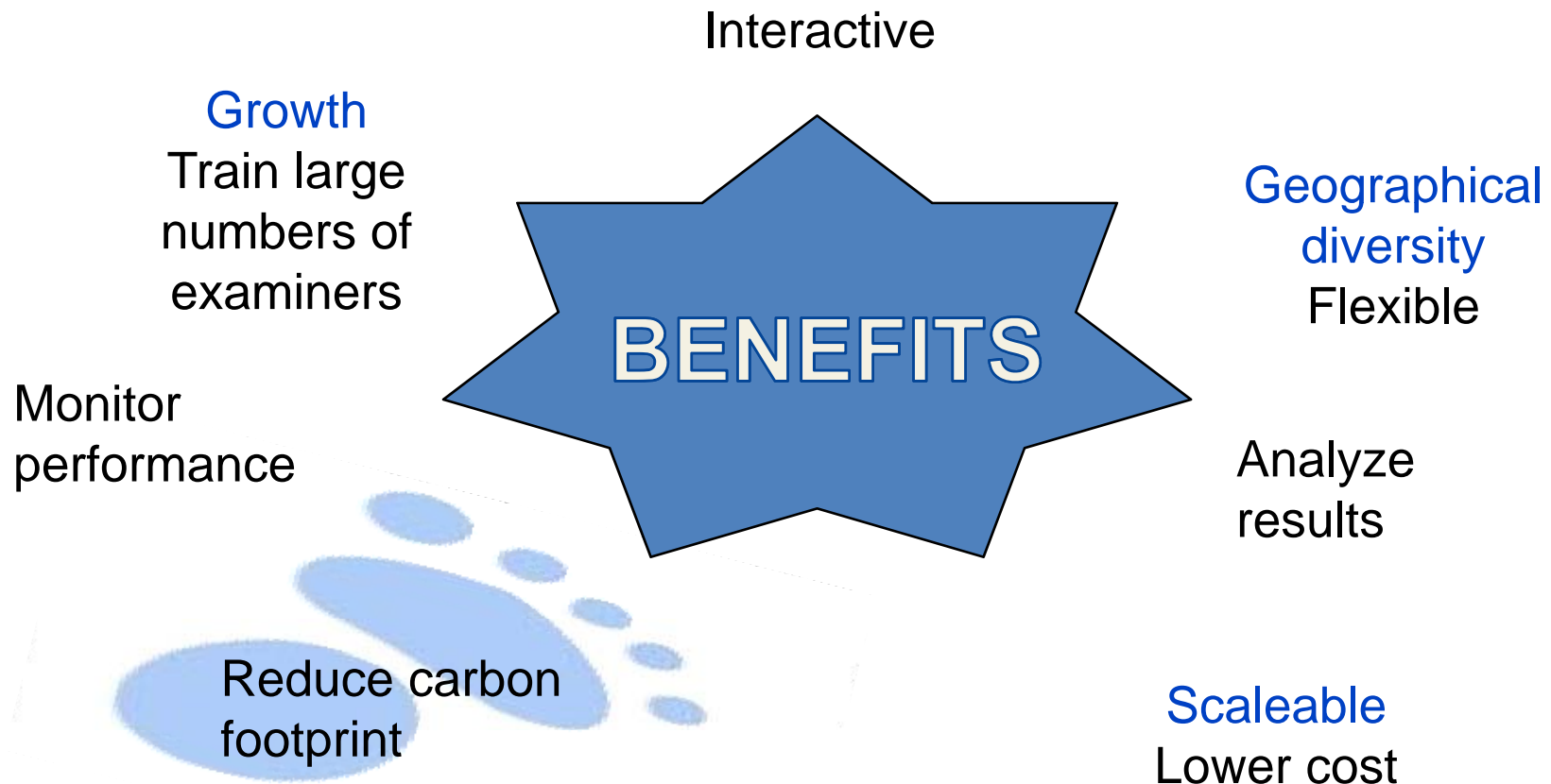
no exams papers - without senior examiners to write questions
no results - without thousands of examiners to mark

- learn about the assessment process
- enhance professional development
- support other teachers
- increase involvement with, and commitment to, international education

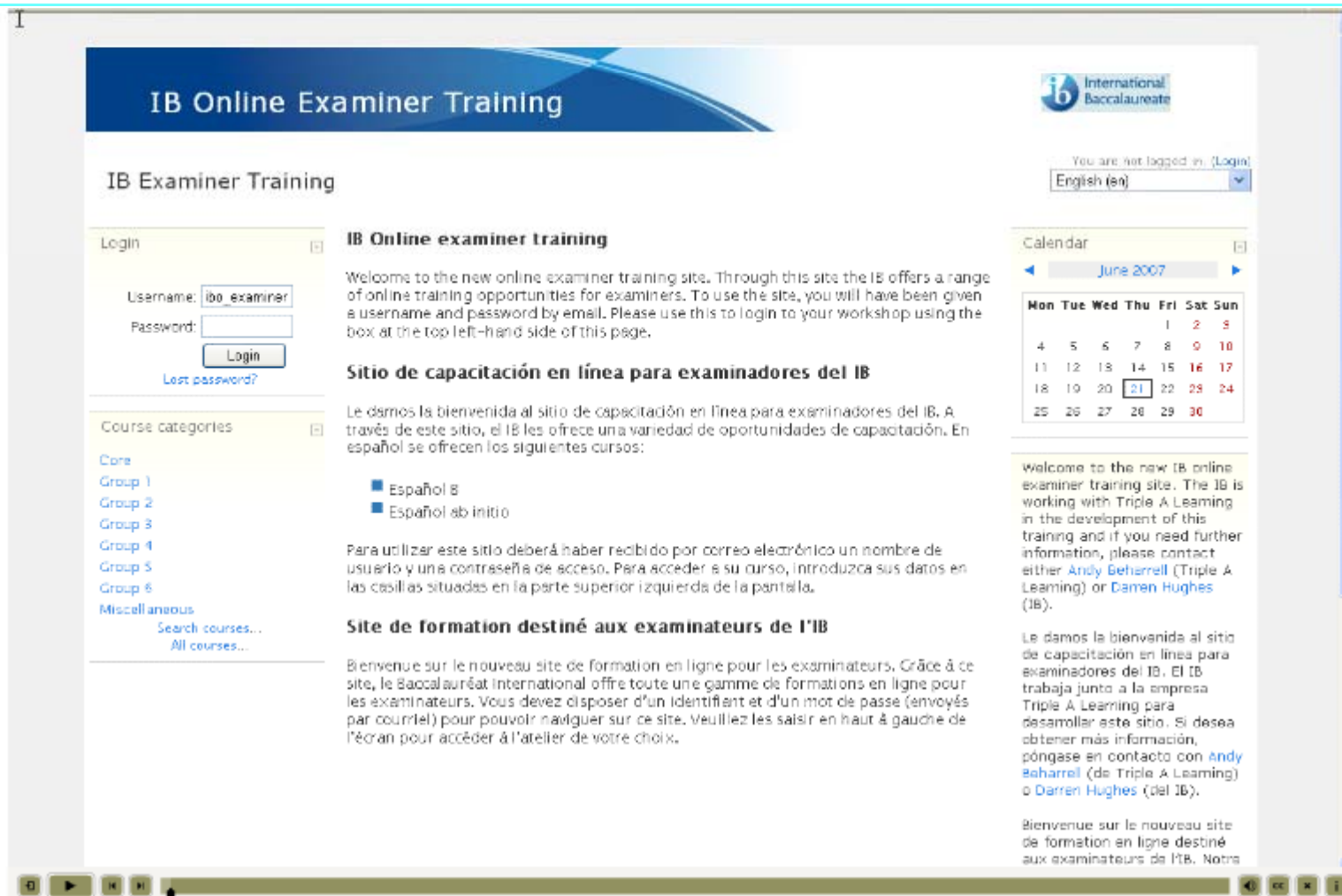
Recruitment process using Web&Flow



Examiner Training using Moodle



http://examinertraining.ibo.org



The screenshot shows the 'IB Online Examiner Training' website. The page has a blue header with the title 'IB Online Examiner Training'. Below the header, there is a navigation menu on the left with 'Course categories' including Core, Group 1 through 6, and Miscellaneous. The main content area is divided into two columns. The left column contains a 'Login' form with fields for 'Username' (pre-filled with 'ibo_examiner') and 'Password', a 'Login' button, and a 'Lost password?' link. The right column contains a welcome message in English and Spanish, a 'Site de formation destiné aux examinateurs de l'IB' section, and a calendar for June 2007. The calendar shows the dates from Monday to Sunday, with the 21st highlighted. The website also features a language selector set to 'English (en)' and a login status indicator.

Workshop homepage

Control Panel
IBO Maths Examiner Training Workshop

View
Designer Options

Course Menu

- Homepage
- Introduction module
- Training module 1
- C Training module 2
- Stage 2 Feedback
- Resource library 1
- C Resource library 2
- Calendar


C - Conditional

Homepage


IB Maths Examiner Training Course

Welcome back to the Maths examiner training workshop. Feedback for the Stage 2 marking has now been added to the workshop. Click on the **Stage 2 feedback** link below to have a look at this material.

Follow the **My Marks** link below to look back at what you entered for each marking exercise.



Introduction module




Training module 1




Training module 2
(Conditional)




Stage 2 Feedback




Resource library 1



Resource library 2
(Conditional)



Calendar



My Marks

On-screen animated demonstrations how to carry out the exercises

Control Panel IBO Maths Examiner Training Workshop

View Designer Options

Homepage > Training module 1 > Document 1D

Course Menu

- Homepage
- Introduction module
- Training module 1
- Training module 2
- Stage 2 Feedback
- Resource library 1
- Resource library 2
- Calendar
- C - Conditional

Stage 1 mark entry

Name: IB Maths Examiner Training
Start time: September 30, 2005 5:36pm
Number of questions: 28

Finish Help

Question 1 (0 points)
Candidate 001 - Question 1 - breakdown

A0 M0 A1 M1

Equation: Create equation Equation editor

Save answer

Question Status

- Unanswered
- Answered
- Answer not saved

1	2	3	4	5
6	7	8	9	10
11	12	13	14	15
16	17	18	19	20
21	22	23	24	25
26	27	28		

Once you have entered all the required information and are happy with what you have entered click the **Save answer** button

Tracks time and contributions

Control Panel
View
Designer Options

Homepage > Expanded Control Panel > Manage Course > **Track Students**

Course Menu

- Homepage
- Introduction module
- Training module 1
- C** Training module 2
- Stage 2 Feedback
- Resource library 1
- C** Resource library 2
- Calendar

C - Conditional

Track Students

Actions

Options	Organize
View some students View all students Search records Copy records Paste records	Set paging size

Student Records

For more statistics on an individual student, click the student's name.

Page: All ◀ ▶

Personal Information		Access Information			Articles	
Full Name	User ID	First Access	Last Access	Hits	Read	Posted
Jennings, Trevor	ibomaths_0414	October 9, 2005 8:11pm	March 23, 2006 10:44am	77	0	0
Gadd, Ms Lois	ibomaths_5213	October 10, 2005 12:43pm	March 19, 2006 10:52am	53	0	0
Scott, Mrs Kathryn	ibomaths_6900	October 10, 2005 12:58pm	March 17, 2006 8:24pm	80	0	0
Billson, Mrs Stephanie	ibomaths_5998	October 10, 2005 1:02pm	March 24, 2006 9:05am	45	0	0
Bannar-Martin, Mark	ibomaths_0827	October 10, 2005 3:47pm	June 10, 2006 9:36pm	84	0	0
Jones, Mr David	ibomaths_5642	October 10, 2005 8:36pm	March 19, 2006 8:56pm	58	0	0
Barton, Ms Shelley	ibomaths_3911	October 11, 2005 2:02am	March 21, 2006 8:50pm	60	0	0
Francis, Mr Alan	ibomaths_3908	October 11, 2005 10:01am	March 20, 2006 4:27pm	95	0	0
Bradfield, Mr John	ibomaths_5560	October 12, 2005 7:38am	March 20, 2006 3:33am	63	0	0
Nakamoto, Mr James	ibomaths_4723	October 13, 2005 9:56pm	March 18, 2006 5:55pm	65	0	0
McCrae, Miss Sheila	ibomaths_3593	October 14, 2005 5:36am	March 19, 2006 8:14am	79	0	0
Helme, Mr Raymond	ibomaths_7192	October 15, 2005 5:25pm	April 30, 2006 3:07pm	81	0	0
de Peiza, Mr Radford	ibomaths_4995	October 17, 2005 5:45am	May 20, 2006 4:03am	124	0	0
Shelton, Mr Philip	ibomaths_3110	October 18, 2005 1:26pm	March 18, 2006 8:49am	50	0	0

Precise data on marks awarded for each question

Control Panel IBO Maths Examiner Training Workshop

View Designer Options

Homepage > My Marks > Detail

Detail: Stage 1 mark entry

Quiz editor Submissions Detail Reports Summary

Last Name	First Name	User ID	Grade	Candidate 00...	Candidate 00...	Candid...
Nakemoto	Mr James	ibomaths_4723	29.1	View	e	View
Bradfield	Mr John	ibomaths_5560	30.1	View	e	View
Wretham	Mr Colin	ibomaths_5509	30.1	View	e	View
Manetto	Mr Luis	ibomaths_3943	0.0	View		View
Meadowcroft	Mr Frank	ibomaths_3105	28.1	View	e	View
Hall	Mrs Rebecca	ibomaths_7559	24.0	View	e	View
van der Molen	Mr Paul	ibomaths_7569	28.1	View	e	View
Hodge	Mr Peter	ibomaths_4375	18.1	View	e	View
Young	Mr Ian	ibomaths_3577	22.1	View	e	View
Oyaneder Soto	Mrs A	ibomaths_1315	28.1	View	e	View
Gape	Mr Geoffrey	ibomaths_5635	23.0	View	e	View
Francis	Mr Alan	ibomaths_3908	28.1	View	e	View
Lindsev	Ms April	ibomaths_6261	27.1	View	e	View
Barton	Ms Shelley	ibomaths_3911	24.0	View	e	View
Scott	Mrs Kathryn	ibomaths_6900	26.0	View	e	View
de Peiza	Mr Radford	ibomaths_4995	24.0	View	c	View
Shelton	Mr Philip	ibomaths_3110	22.0	View	e	View
Wynne-Jones	Mr David	ibomaths_5565	28.1	View	e	View
McCrae	Miss Sheila	ibomaths_3593	29.1	View	e	View
Gadd	Ms Lois	ibomaths_5213	30.1	View	e	View

Actions

Options: Manage Columns

Show all records

Update table

Hide/Show columns

Export quiz detail to disk

To paste student records go to [Manage Students](#) and select the student records. Return to this page, click **Paste records**.

Paste records

Options: Search

Search: All records

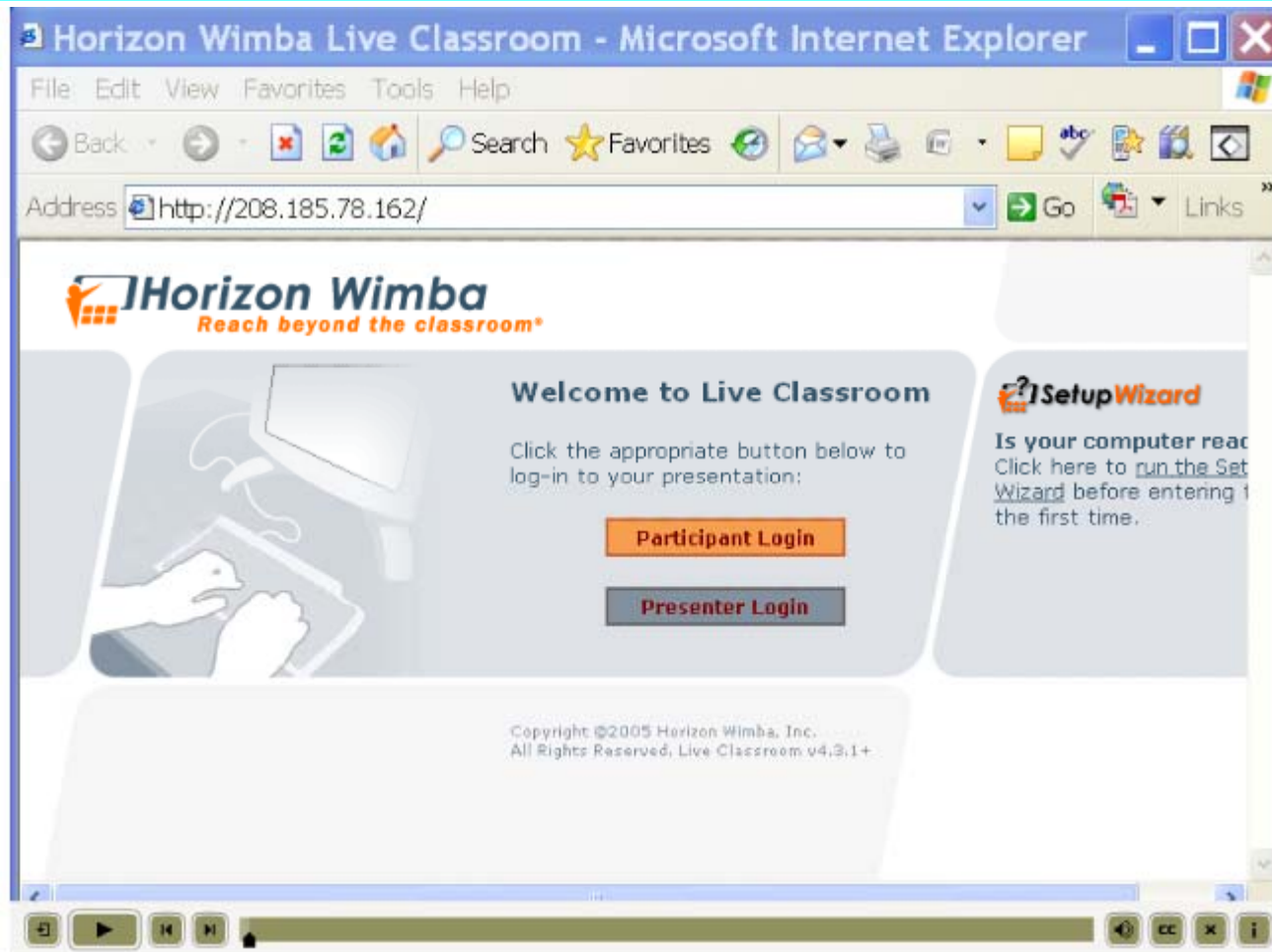
Criteria: Last Name

Comparison: Contains

Value:

Search

Live Classroom



Assessment and Technology

Human-Computer Interaction issues

- Machine versus human marking
- Role and issues of electronic coursework
- Designing records for different purposes
- Ownership
- Using technology effectively in reporting
- Potential for evaluation by teachers, school management and society.

Plans - Changes

See Samantha and Sasha on Helpdesk

- Academic honesty
- Review, reconsideration and appeal
- Changes to *General Regulations: Diploma Programme*
- *Handbook of procedures for the Diploma Programme: 2009*
- Enquiry upon results category 1 (re-mark)
- Submission of form D1: change of deadline
- The examination schedule
- School-based syllabuses: date set for written examinations
- The split session arrangement
- The IB information system (IBIS): new developments

Article 19: Enquiry upon results

- May 2009 session
 - a candidate's grade may also be lowered as a consequence of a re-mark.
- The current article states: ***Re-marking a candidate's externally assessed material may lead to a higher grade for a subject, but not to a lower grade.***
- The new wording states: ***Re-marking a candidate's externally assessed material may lead to a higher or lower grade for a subject.***

Enquiries upon results re-mark outcomes

	May 2003	May 2004	May 2005	May 2006	May 2007	May 2008
No of grades issued	217,912	239,922	270,557	308,894	337,581	374,967
No of category 1 enquiries (as % of all grades)	2,767 (1.3%)	2,910 (1.2%)	4,909 (1.8%)	6,123 (2.0%)	8,267 (2.4%)	11,274 (3.0%)
No of grade changes (as % of enquiries)	488 (18%)	586 (20%)	968 (20%)	1,103 (18%)	1,344 (16%)	1,635 (15%)
% of all grade results changed through enquiries	0.22%	0.24%	0.36%	0.36%	0.40%	0.44%

Theory of Knowledge

	May 2003	May 2004	May 2005	May 2006	May 2007	May 2008
No of category 1 enquiries	266	335	687	582	772	1,369
% of enquiries that changed grade	24%	32%	23%	15%	15%	13%
% of all ToK results that changed grade	0.3%	0.4%	0.6%	0.3%	0.3%	0.5%

Extended Essay

	May 2003	May 2004	May 2005	May 2006	May 2007	May 2008
No of category 1 enquiries	419	444	651	744	999	1,410
% of enquiries that changed grade	28%	27%	18%	20%	19%	18%
% of all EE results that changed grade	0.5%	0.5%	0.4%	0.5%	0.5%	0.6%

Enquiries upon results re-mark outcomes

	Nov 2003	Nov 2004	Nov 2005	Nov 2006	Nov 2007
No of grades issued	24,019	24,074	27,166	29,441	32,013
No of category 1 enquiries (as % of all grades)	229 (1.3%)	250 (1.2%)	543 (1.8%)	767 (2.0%)	1116 (2.4%)
No of grade changes (as % of enquiries)	35 (15%)	32 (13%)	101 (19%)	111 (14%)	167 (15%)
% of all grade results changed through enquiries	0.15%	0.13%	0.37%	0.38%	0.52%

Article 15: Award of the IB diploma

- May 2010 session a grade E in either an extended essay or theory of knowledge will be a **'failing condition'**, requiring a student to obtain **28 points** overall for a diploma to be awarded.
- The current article 15.2(c) states: ***The IB diploma will be awarded to a candidate whose total score is 24, 25, 26 or 27 points, provided all the following requirements have been met.***
 - ***(c) Grades A (highest) to E (lowest) have been awarded for both theory of knowledge and an extended essay, with a grade of at least D in one of them.***
- The new wording for article 15.2 (c) states:
 - ***(c) At least grade D has been awarded for both theory of knowledge and an extended essay.***

New Failing Condition

May 2007

- 1.4% candidates would have failed (503)
 - Of these
- 16% (79) attained E in ToK and 84% (424) in EE

November 2006

- 1 % candidates would have failed (32)
 - Of these
- 31% (10) attained E in ToK and 69% (22) in EE

Planned Research

- ToK Prescribed Titles (PTs)
 - Which PTs elicited best performance
 - Choice of PT by different candidates more and less able
 - Is there a relationship between PTs and EURs and grade changes
- Extended Essays
 - Changes in performance in science is this linked to cohort
 - Cohort changes over past 5 years
 - Performance across schools experienced v. new

Xiexie

