



Linking Professional Development and Research in the IB

Jonathon Marsh <jonathon.marsh@ibo.org>
Head, Professional Development and Research Division
IB Curriculum and Assessment Centre



Issues

Organizational focus

The point is not to value what you measure....

..... but to measure what you value!!

Various concerns

1. To support the quality claims of the IBO
2. To support and respond to the research interests of various stakeholder groups within the wider IB community.
3. To further develop our understanding of international education

A dichotomy of interests

A growing need to produce evidence of performance through statistical analysis of quantitative data collected from schools and universities.

As contrasted with

A growing interest in unpacking the expressive order values and social constructs associated with the successful development of international education and schools as professional learning communities.

The challenge of data collection

- Lack of accessible data held by universities and schools
- Disparate types of data and data structures
- Difficulty in tracking high mobility students
- Difficulty in gathering demographic data
- Inherent limitations of performance indicators
- Lack of standardised evaluation procedures
- Lack of automated data collection systems
- Etc. etc.....

Resources and resource deployment

Who will do what?

How will they do it?

How much will it cost?

Who will own the data?

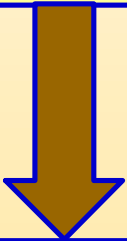
Who will have access to which data?



Evidence

Types of evidence needed

All performance indicators have inherent limitations!!



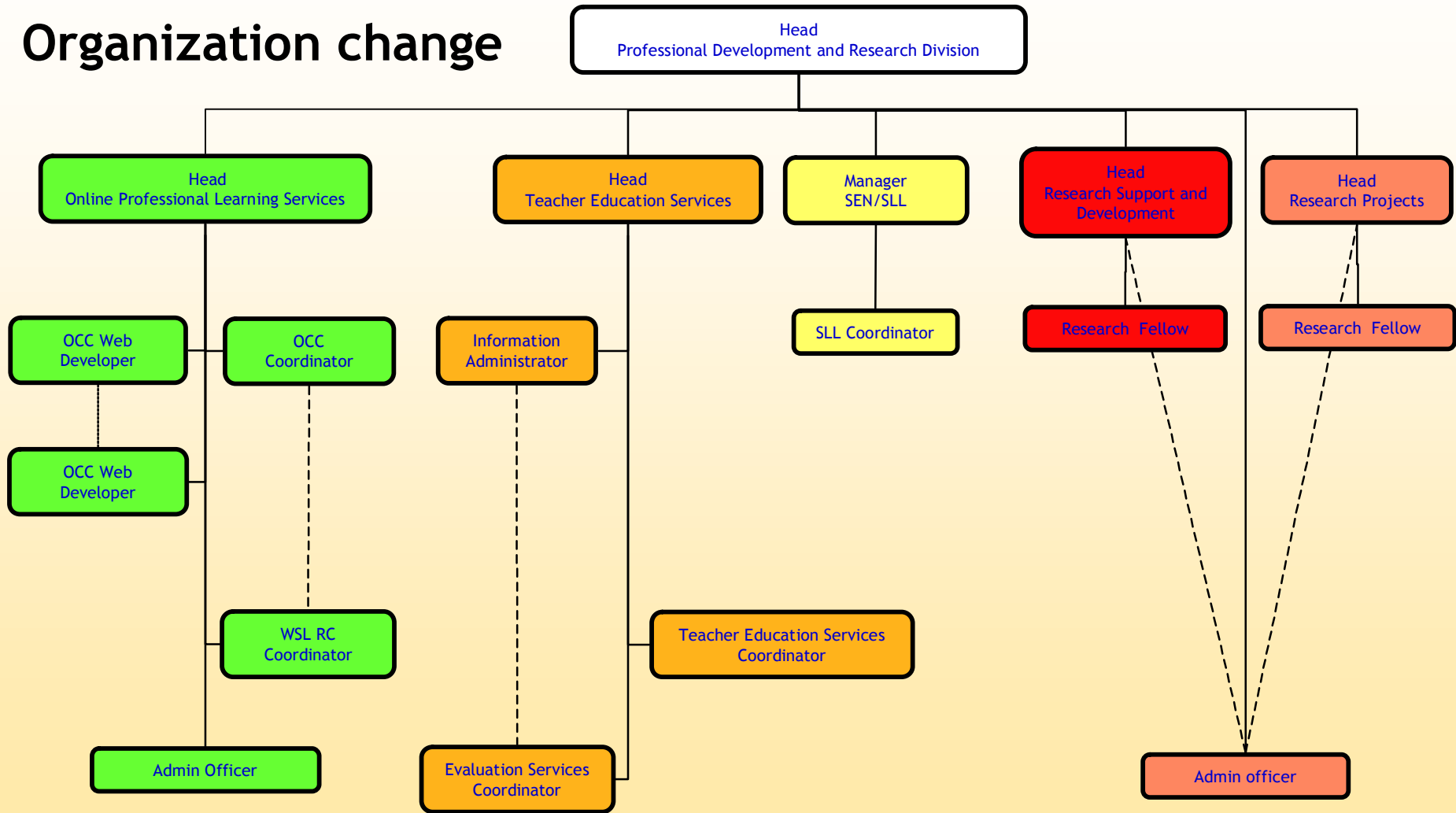
Effective selection, definition and combination is critical!!!

Exam results
Acceptance rates
Retention rates
Student progress rates
Completion rates
Value added
Observation
Employment and further study
Authorization and evaluation
Independent/external assessments
Stakeholder feedback
Etc., etc.....



Future Directions

Organization change



Linking up to professional development

The single best way to have research inform the formation of effective teaching and learning environments is through the professional development of teachers.

A horizontal flowchart consisting of four light blue rounded rectangular boxes connected by yellow curved arrows pointing from left to right. The boxes contain the text: 'Research outcomes', 'Professional development', 'Enhanced teaching', and 'Enhanced Learning'.

Research outcomes

Professional development

Enhanced teaching

Enhanced Learning

Linking up to professional development

Clarification and communication of research agenda and activities

Opportunities to engage

OCC and Web 2.0 development

Practitioner Research Project

Teacher award scheme

Access to meaningful resources and data



Revised research goals

Goal 1

To set priorities and build structures to support both institutional research (concerned primarily with validating the quality claims of the organization) and academic research (concerned primarily with improving our programmes and our understanding of international education).....

..... such that an agreed and well-understood organization-wide research strategy is in place.

Revised research goals

Goal 2

To establish and maintain a range of research related services....

..... such that effective support is given to the emerging community of researchers interested in expanding and enhancing discourse on, understanding of and response to

- i) IB programmes and practices
- ii) stakeholder needs
- ii) international education in general.



Revised research goals

Goal 3

To develop effective policies and procedures...

... such that an agreed approach to the management of research activity is established and communicated and the research efforts of all IBO offices and constituencies are well coordinated.

Operational objectives

Goal 1

To set priorities and build structures to support both institutional and academic research.

A large, solid brown arrow pointing from the Goal 1 box towards the list of objectives.

To make explicit the practical and philosophical reasons for supporting and conducting research.

To clarify the roles, responsibilities and support needs of stakeholders.

To develop a system for questions and proposals to be received and prioritized.

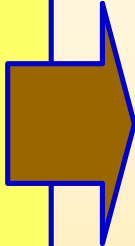
To build mechanisms for the effective reporting and dissemination of results.

To establish a system for evaluating and reviewing ongoing cost/benefit of activities.

Operational objectives

Goal 2

To establish and maintain a range of research related services

A large, solid brown arrow pointing from the goal box on the left towards the list of objectives on the right.

To conduct a needs analysis of school based practitioners and other interested groups.

To build and maintain an online directory of researchers.

To build and maintain an online inventory of relevant research questions.

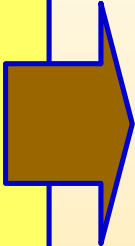
To establish effective “help line” type communications channels.

To establish support services for IBO staff with respect to the appropriate selection and application of research methods.

Operational objectives

Goal 2 cont'd

To establish and maintain a range of research related services

A large, solid brown arrow pointing from the goal box on the left towards the list of objectives on the right.

To review and rebuild the research website to include more collaborative work tools and to better align it with the IBO website.

To review and rebuild the research database to allow effective searching and tracking.

To review the provision of research related publications in order to better focus publishing resources on clearly identified user needs/interests.

To establish an effective “marketing” strategy to promote use of the variety of services on offer.

Operational objectives

Goal 3

To develop effective policies and procedures

A large, solid brown arrow pointing from the goal box on the left towards the list of objectives on the right.

To specify commonly used selection and evaluation procedures for research projects.

To establish common standards and approaches to documenting project work.

To establish standardized approaches to record keeping and archiving of research data.

To establish agreed protocols for interoffice reporting and communication around active projects.

Operational objectives

Goal 3 cont'd

To develop effective policies and procedures

A large, dark brown arrow pointing from the left box to the right box.

To build a formal system for recognizing individual research associates.

To write the terms of reference governing research partnerships with universities and other interested organizations.

To collect and communicate information on data access and copyright restrictions related to various areas of investigation.

To facilitate the selection of appropriate research methods through the provision of a typology of approaches to research.



Revised role and structure of the research committee

Membership to include regional representation

Chaired by a head of school

External representation selected on the basis of relevant expertise

Closely aligned with and complementary to the roles and responsibilities of the global research team



Thankyou
jonathon.marsh@ibo.org