

Global & Regional updates regarding recognition of IB qualifications in the United States, Australia, Canada and the United Kingdom

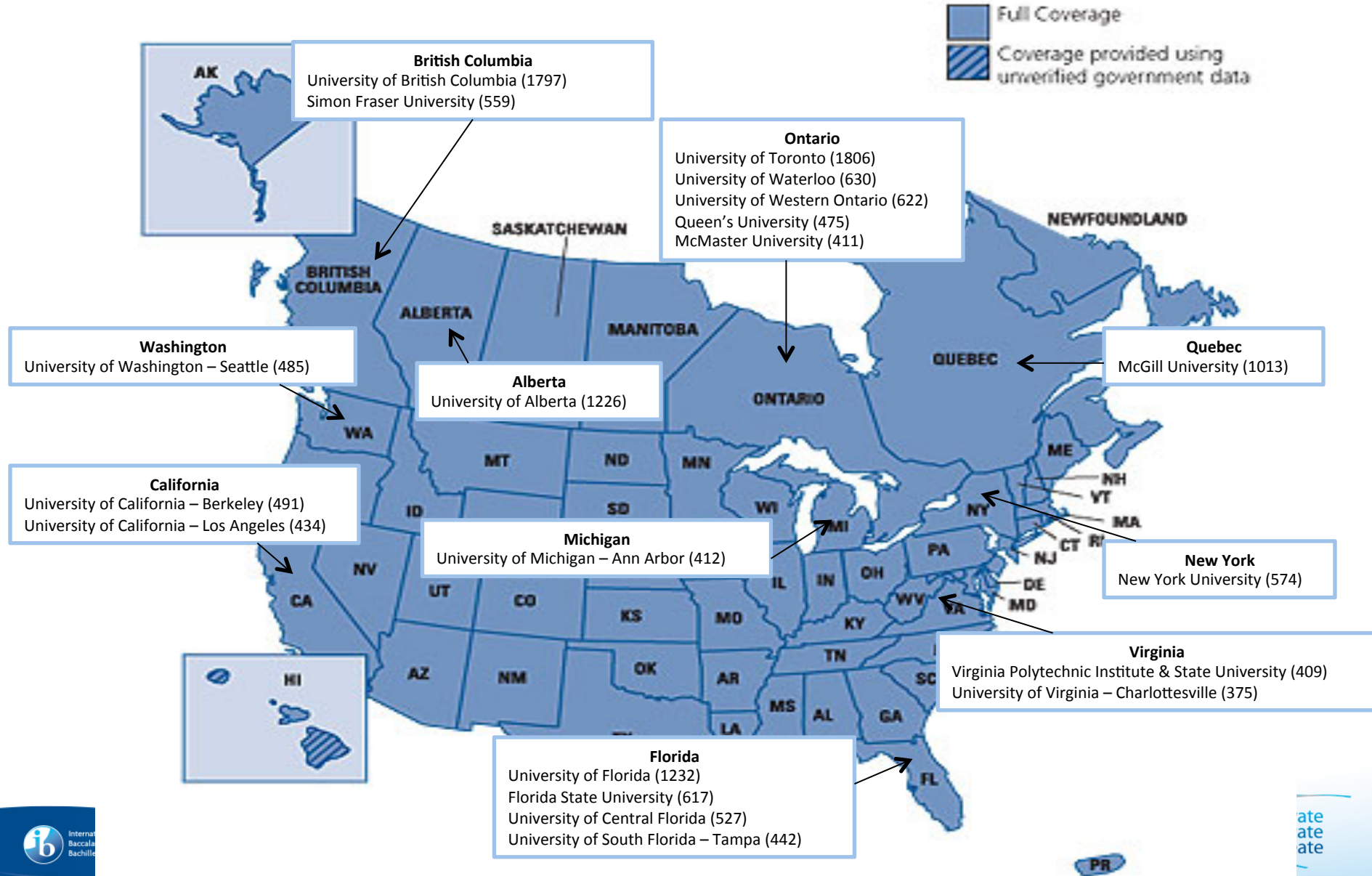
Paul Campbell and Julian Metcalf
Friday, October 25

May 2013 Exam Statistics

Number of candidates	127,210
Number of exams	466,959
Number of diplomas attempted	61,644
Number of diplomas awarded	48,638
Success rate on diplomas	79%

Number of candidates	127,210
Number of exam papers	1,034,728
Number of subject components (including IA, EE and TOK)	1,861,519

Top 20 Receiving Universities in North America (as of September 2013)



Ideal IB Policy

- Recognize the full Diploma
- Give credit for Higher Level courses individually
- Give credit for Standard Level courses individually
- Recognition for Theory of Knowledge and/or Extended Essay
- Scholarships available
- Higher placement available

How to Recruit IB Students

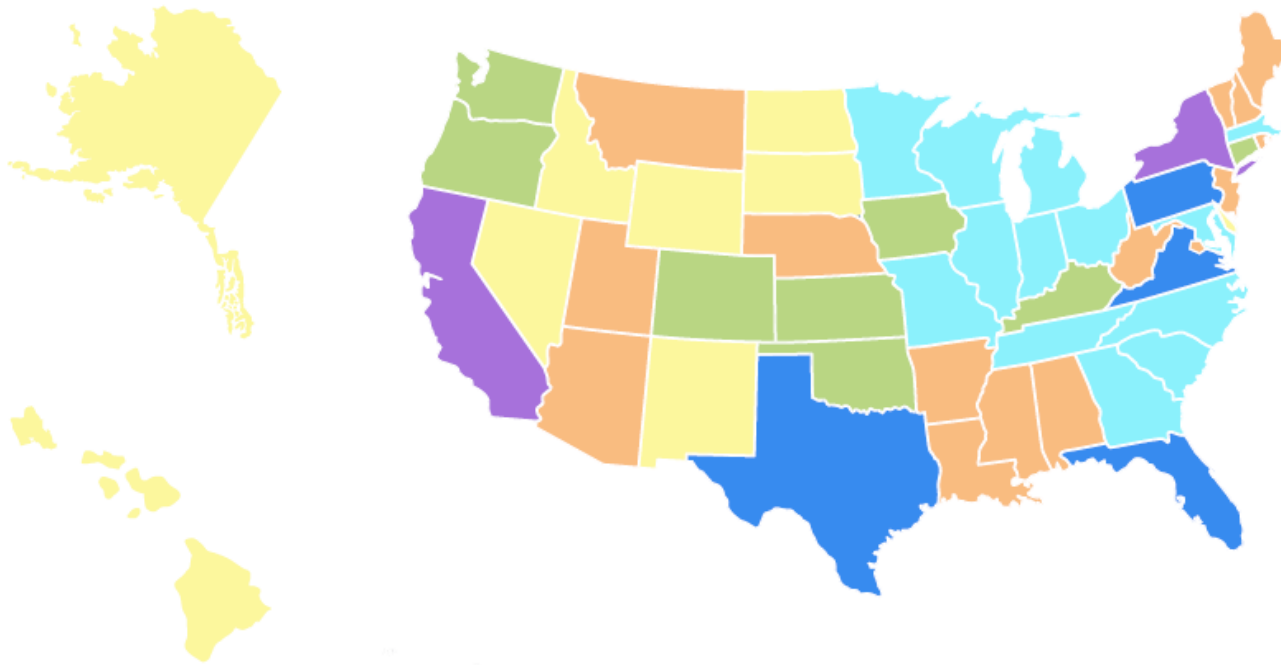
- Strong IB Policy – Credits for HL and SL, EE, TOK
- Publish IB Policy on University Website and Publications
- IB Specific Scholarships
- IB Student Registry
- IB Website
- Attend IB College Fairs – Texas, Mid-Atlantic, Ontario
- Attend IB Annual Regional Conferences:
 - Americas – Mid-July
 - Africa, Europe, and Middle East – 3rd week in October
 - Asia Pacific – 3rd week in March
- Host IB Counselor Breakfast

How to Recruit IB Students

Highlight:

- International Study Opportunities
- Trans/Inter Disciplinary Courses
- Student Centered Learning
- Small, Personalized Classes
- Engaged Faculty and Staff
- Academic Research Opportunities
- Education Beyond the Campus
- Service Opportunities

University Recognition in the US (2012)



Source : <http://www.ibo.org/recognition/resourcesanddocumentlibrary/moreresources/documents/USMap2012.pdf>

University of Florida

IB Website: Students who receive credit for scores of 4 or higher on both higher level and standard level examinations. A maximum 45 credit hours is allowed. Scores of 4 or higher on IB French B, German B, Classical Latin and Spanish B examinations fulfill the foreign language proficiency requirement for the College of Liberal Arts and Sciences, the College of Journalism and Communications, and B.A. programs in the College of Fine Arts, regardless of whether the student earned the IB diploma.

For credit information, please refer to the credit chart.

The University of Florida also offers two generous scholarships for graduates of United World Colleges.

U n i v e r s i t y o f F l o r i d a :
<https://catalog.ufl.edu/ugrad/current/advising/info/IB-examination-credit-info.aspx>

University of Florida

IB Exam	Score of 4 3 credits / exam, unless otherwise noted	Score of 5 4 credits / exam unless otherwise noted	Score of 6-7 5 credits / exam unless otherwise noted	General Education Credit
Biology	BSC 2009/2009L (4 credits)	BSC 2009/2009L and 2010/2010L (8 credits)	BSC 2009/2009L and 2010/2010L (8 credits)	B
Business and Management	GEB 2011	GEB 2011 and 0301***	GEB 2011 and 0301***	
Chemistry	CHM 1030 and CHM 0301L*** (4 credits)	CHM 1030 and 0301L*** and 2045/2045L (8 credits)	CHM 1030 and 0301L*** and 2045/2045L (8 credits)	CHM 1030, 2045, 2045L = P. No gen ed credit for CHM 0301L.
Computer Science	COP 3502	COP 3502 and CIS 0301***	COP 3502 and CIS 0301***	
Design Engineering	ETI 0301***	ETI 2410 and 0301***	ETI 2410 and 0301***	
Economics	ECO 0301***	ECO 2013 and 2023 (8 credits)	ECO 2013 and 2023 (8 credits)	ECO 2013, ECO 2023 = S. No gen ed credit for ECO 0301.
Ecosystems and Societies	EVR 2017	EVR 2017 and 0301***	EVR 2017 and 0301***	
English Language and Literature*	ENC 1101	ENC 1101 and 1102	ENC 1101 and 1102	C
English Literature*	ENC 1101	ENC 1101 and LIT 2110	ENC 1101 and LIT 2110	ENC 1101 = C; LIT 2110 = C or H
Environmental Systems	ISC 1050	ISC 1050 and 0301***	ISC 1050 and 0301***	
Film Studies	FIL 2000	FIL 2000 and 2420	FIL 2000 and 2420	
French B	FRE 1131 (5 credits)	FRE 1131 and 2220 (5 and 4 credits)	FRE 1131 and 2220 (5 and 4 credits)	
Further Mathematics (Advanced Math)	MHF 3202**	MHF 3202** and 0301***	MHF 3202** and 0301***	MHF 3202 = M. No gen ed credit for MHF 0301.
Geography	GEA 1000	GEO 2200 and 0301***	GEO 2200 and 0301***	GEA 1000 = S and N. GEO 2200 = P. No gen ed credit for GEO 0301.

Stanford University

IB Website: Stanford University awards advanced placement credit for certain Higher Level IB examinations with scores of 5 or higher. Stanford University does not consider or award credit for IB Standard Level examinations or course work. A maximum of 45 quarter units of IB, AP and/ or transfer credit combined may be applied toward the undergraduate degree. For more detailed information, including the IB chart at Stanford, please see the Office of the University Registrar website.

S t a n f o r d U n i v e r s i t y :
<http://studentaffairs.stanford.edu/registrar/students/baccalaureate-credit>

University of California

IB Website: University IB policy

The International Baccalaureate Organization (IBO) awards either a diploma or a certificate for individual IB exams. Students completing the IB diploma with a score of 30 or above will receive 30 quarter (20 semester) units total toward the UC undergraduate degree. The University grants eight quarter (5.3 semester) units for students who receive IB certificates with scores of 5, 6 or 7 on designated exams.

The IB exams for which the University grants credit are listed by campus; use the links at right to see credit granted for each exam by campus and school or major.

Designated examinations may be considered equivalent to freshman-level courses in the subject and may be used to satisfy general education or breadth requirements.

U n i v e r s i t y o f C a l i f o r n i a :

<http://admission.universityofcalifornia.edu/counselors/exam-credit/ib-credits/index.html>

University of Maryland

IB Website: Students earning scores of 5, 6, or 7 on an exam may earn from 3 to 9 college credits in most subject areas. The amount of credit awarded depends on a student's score and the exams that s/he has taken. Many departments will also exempt students from introductory and lower level courses. In order to receive credit, students should arrange to have their IB exam results forwarded directly to the University prior to summer orientation.

For complete details about credit awards and course equivalencies, please visit the website.

University of Maryland- College Park: <http://www.tce.umd.edu/apibclep.html#ib>

University of Maryland

International Baccalaureate Exams (IB)

For further information, contact the Office of Undergraduate Admissions (um-admit@uqa.umd.edu), Mitchell Building, University of Maryland, College Park, Md. 20742, (301) 314-8385, or contact the appropriate department directly.

NOTE: Academic requirements for individual programs are determined by the year in which a student begins his or her studies. The requirements listed in this catalog may differ from those in place when you began your program. Consult a faculty advisor in your department to determine which requirements apply to you.

International Baccalaureate Exams (IB)

IB Exam Title	Score	Related Course	Cr	Maj	Core	GenEd	Notes
Anthropology Higher	5, 6, 7	See Notes					Under review. Students interested in Anthropology should contact department for placement.
Art/Visual Design Higher	5, 6, 7	See Notes					Under review. Students interested in Art should contact an advisor for placement.
Biology Higher	5	Lower Level Elective	4	No	No	No	BSCI105 fills a major requirement in all Biological Sciences; also fills CORE-Lab (Life) Science requirement or GenEd-Distributive Studies-Natural Sciences Lab requirement. Contact the College of Computer, Mathematical, and Natural Sciences for placement, 301-405-2080.
	6, 7	BSCI 105 & Lower Level Elective	8	Yes	Yes	Yes	
Chemistry Either	5	CHEM131 & CHEM132	4	Yes	Yes	Yes	CHEM fills requirement in all Biological Sciences, Biochemistry, and Chemistry majors; also fills CORE-Lab (Physical) Science requirement or GenEd-Distributive Studies-Natural Sciences Lab requirement. Contact department for placement, 301-405-1791.
		CHEM131 & CHEM132 & CHEM271	8	Yes	Yes	Yes	
	6, 7	CHEM131 & CHEM132 & CHEM271	8	Yes	Yes	Yes	
		CHEM271	4	Yes	No	No	
Chinese	5, 6, 7	See Notes	3		No	No	Under review. Students interested in Chinese should contact department for placement.
Computing Higher	5, 6, 7	Lower Level Elective	3		No		Contact department for placement, 301-405-2672.
Economics Either	5	ECON 205	3		Yes	No	ECON majors must score 6 or 7 to receive credit toward the major. ECON fills one of two CORE Social/Behavioral Science requirements or the GenEd-Distributive Studies-History & Social Sciences requirement. Contact department for placement, 301-405-3286.
	6,7	ECON200 & ECON201	6	Yes	Yes	Yes	
English A/B Higher	5, 6, 7	ENGL 240	3	Yes	Yes	No	ENGL 240 satisfies CORE-Literature requirement. Contact department for placement, 301-405-3825.
Env. Studies Higher	6, 7	See Notes	3				Under review. Students interested in Environmental Science or Policy should contact an advisor for placement.
French Standard	5	FREN 203 or FREN 204	4	No	Yes	No	Standard: Students with score of 5 who wish to continue must enroll in FREN 204; with a score of 6 or 7 must enroll in FREN 250 or higher level courses. Higher: Students with score of 5, 6, or 7 may enroll in 300-level courses. FREN 203, 204, or 211 fills CORE- Humanities requirement; FREN 250 fills CORE-Literature requirement. Contact department for placement, 301-405-4034.
		FREN 204 & FREN 211	8	Yes	Yes	No	
	Higher	5	FREN 204 & FREN 250	8	Yes	Yes	
6, 7		FREN 204 & FREN 250	6	Yes	Yes	No	

University of California

The University of California awards 8 qtr/5.3 sem units of credit for each of the following International Baccalaureate Individual Certificate subject Higher-Level exams with grades of 5, 6 or 7. All exams must be at the Higher Level (HL) and not category B.

Afrikaans	Japanese
Anthropology	Latin
Arabic	Malay
Biology	Mathematics
Chemistry	Music
Chinese	Norwegian
Computer Science	Persian
Dance	Philosophy
Danish	Pilipino
Dutch	Polish
Economics	Physics
English: Literature (formerly English A1)	Portuguese
Environmental Systems	Psychology
Film	Russian
Finnish	Serb-Croat
French	Siswati
Further Mathematics	Slovene
Geography	Spanish
German	Swahili
Greek (Modern)	Swedish
Hebrew	Theatre Arts
Hindi	Turkish
History	Urdu
Indonesian	Visual Arts
Italian	Welsh

Stanford University

SUBJECT	SCORE	PLACEMENT	QUARTER UNITS	DUPLICATING COURSES
Chemistry	5 or higher	CHEM 35 or CHEM 135	8	CHEM 30, 31, 31A, 31B, 31X, 33
Computer Science	5 or higher	CS 106B or CS 106X	5	CS 105, 106A
Chinese A1*	5 or higher	Take placement exam if continuing in this language	10	CHINLANG 1, 2, 3
French (A1, A2, or B)*	5 or higher	Take placement exam if continuing in this language	10	FRENLANG 1, 2, 3
German (A1, A2, or B)*	5 or higher	Take placement exam if continuing in this language	10	GERLANG 1, 2, 3
Japanese A1*	5 or higher	Take placement exam if continuing in this language	10	JAPANLNG 1, 2, 3
Korean A1*	5 or higher	Take placement exam if continuing in this language	10	KORLANG 1, 2, 3
Mathematics	5 or higher	MATH 51	10	MATH 19, 20, 21, 41, 42
Physics	6 or higher	PHYSICS 25	8	PHYS 21, 23
	5	PHYSICS 23, 25	4	PHYS 21
Portuguese A1*	5 or higher	Take placement exam if continuing in this language	10	PORTLANG 1A, 2A
Russian B1*	5 or higher	Take placement exam if continuing in this language	10	SLAVLANG 1,2,3
Spanish (A1, A2, or B)*	5 or higher	Take placement exam if continuing in this language	10	SPAN 1, 2, 3
* A score of 5 or higher on this test fulfills the Language Requirement.				

University of Rochester

WITH INTERNATIONAL BACCALAUREATE,
YOU CHOSE TO BE

EXCEPTIONAL

You tackled one of the most demanding
high school programs in the world.



Keep choosing to be great.
Choose Rochester.

enrollment.rochester.edu/admissions/IB



UNIVERSITY of
ROCHESTER

International Baccalaureate at Rochester

The time and effort you are putting into the International Baccalaureate program isn't going unnoticed. The University of Rochester considers the IB diploma to be one of the most demanding secondary school curricula. Whether you are on the diploma track or taking a few IB courses that interest you, we understand how rigorous your coursework is, and we want to reward you for it.

We offer scholarships. The University of Rochester is the only university in the Northeast to offer a scholarship to students pursuing the IB diploma. This is one of many [merit scholarships](#) available at the University of Rochester.

Do real research. Rochester is one of the smallest top-tier research universities in the nation. Our students are encouraged to engage in a broad range of in-depth research—similar to IB students' experience with their Extended Essays.

Study what you love. Our unique open curriculum is tailor-made for IB students who bring with them an equally unique breadth of understanding across academic disciplines.

Get college credit. Students who score a 5 or better on their higher level exams will receive course credit, putting them on the right track to optimal success.

Put it on your application. We've updated our [testing policy](#) and expanded the range of scores we accept during your application process. On your application, you can now include IB scores in lieu of the traditional AP or SAT scores.

We look forward to hearing from you!

[IB Exam Credit Award Policy](#)

Get to know [Gwen Musial](#), a current Rochester student who completed the IB program in high school.

University of Rochester

(Note: This chart is for use with Higher level exams scores only.)

Subject	Score	Placement/Credit
Social Anthropology	6+	Award credit for ANT 101 after completion of any other course with a grade of C or better.
Biology	5+	Award four general Biology elective credits. Not for major. (Eligible to enroll in BIO 112 with IB score of 7.)
Chemistry	6+	Award credit for CHM 131. Place into CHM 132. Eligible to apply for CHM 171Q.
Computer Science	5+	Award credit for CSC 108.
Economics	4	Place into ECO 207. No credit awarded.
	5+	Place into ECO 207. Award credit for ECO 108.
English	6+	Award four hours of elective English credit, not for major, after completion of an English literature course with a grade of C or better.
Foreign Language (all except Latin)	5	Place into 152. Award credit for 151 after completion of 152 with a grade of B or better.
	6	Place into 200. Award credit for 151 and 152 upon completion of the 200 with a grade of B or better.
	7	Place into 200. Award credit for 151 and 152 upon completion.
Geography	5+	Award for EES 101. Place into EES 201.
History	6+	Award maximum of four hours of history elective credit .
Latin	5+	Award credit for LAT 102.
Mathematics	4+	Place into MTH 162. Award credit for MTH 161 after completion of MTH 162 with a grade of C or better.
Music		Please contact the department for credit to be awarded or placement.
Philosophy	5+	Award credit for PHL 101.
Physics	7	Place into PHY 114 or PHY 122. Award credit for PHY 113 or PHY 121 after completion of PHY 114, or PHY 122 with a grade of B- or better.
Psychology	5	Waive PSY 101 requirement. No credit awarded.
	6+	Award credit for PSY 101.
Theatre Arts	6+	Award four hours of elective English credit, not for major.
Visual Arts	6+	Award maximum of four hours in studio arts upon completion of a 100-level course with a grade of B or better.

University of British Columbia

IB Website: The admission average for an IB Diploma applicant is calculated on 3 Higher Level and 3 Standard Level subjects, including any pre-requisite subjects required by the program to which you are applying. A minimum requirement of 24 points, including additional points for TOK and EE is required to be considered for admission. However, due to limited enrolment, a higher score will be required for admission to most programs. Early admission decisions can be made based on Anticipated IB grades.

First year university credit will be awarded to students who achieve a grade of at least 5 in Higher Level Arts courses and 6 in Higher Level Science courses. University credit will be granted for select Standard Level IB courses as well.

University of British Columbia: <https://you.ubc.ca/ubc/vancouver/ib.ezc>

University of British Columbia

Subject	Minimum IB score	UBC course granted (including credit values)
Biology HL	6	BIOL 1st-year level (8), with exemption from BIOL 111, BIOL 121 and BIOL 140
Business and Management HL	5	COMM 1st-year level (3), precludes credit for COMM 100 and COMM 101
Chemistry HL	6	CHEM 121 (4) [1]
Classical Languages: Greek HL	5	GREK 200 (6)
Classical Languages: Greek SL	5	GREK 2nd-year level (3), with exemption from GREK 200
Classical Languages: Latin HL	5	LATN 200 (6)
Classical Languages: Latin SL	5	LATN 2nd-year level (3), with exemption from LATN 200
Computer Science HL	6	CPSC 1st-year level (3)
Economics HL	5	ECON 1st-year level (6). Not for credit towards Economics specializations.
English Language and Literature A HL	5	ENGL 1st-year level (6)
English Literature A HL	5	ENGL 1st-year level (6)
French A SL	5	FREN 122 (3) and FREN 123 (3)
French B HL	5	FREN 122 (3) and FREN 123 (3)
French Language and Literature A HL	5	FREN 224 (3) and FREN 225 (3)
French Literature A HL	5	FREN 220 (3) and FREN 221 (3)
Geography HL	6	GEOG 1st-year level (6)
German A SL	5	GERM 200 (3)

University of Toronto

IB Website: The IB diploma including English HL or SL is required for admission consideration. Mathematics HL or SL is required for programs requiring Calculus. Math Studies will not satisfy a math requirement. Applicants in their final year of the diploma will be considered with predicted results of 28 or higher. More competitive programs require higher predicted results.

Transfer credit towards arts, science or commerce/management programs is granted for some IB higher level subjects with a final grade of 5 or higher. For more information refer to www.adm.utoronto.ca.

University of Toronto: http://www.adm.utoronto.ca/adm_pdf_files/ibutsc.pdf

University of Toronto

University of Toronto Scarborough

Last Updated: 23-May-2013

International Baccalaureate

Course Name	Transfer Credit Given	Credit Value	Subject Area/Breadth Requirement (BR)	Exclusions	Notes
ARABIC A1	NML1**Y	1.0	(BR=Arts)		
ARABIC A2	NML1**Y	1.0	(BR=Arts)		
ARABIC B	NML1**Y	1.0	(BR=Arts)		No credit is given to native speakers
BIOLOGY	BIOA02H3 BIOA01H3	0.5 0.5			
BUSINESS AND MANAGEMENT	MGTA**Y	1.0	(BR=SocBeh)	MGTA01H3, MGTA02H3	
CANTONESE B	LGGA**Y	1.0	(BR=Arts)	LGGA60H3, LGGA61H3, LGGB60H3, LGGB61H3, LGGB62H3, LGGB63H3	No credit is given to native speakers
CHEMISTRY	CHMA10H3 CHMA11H3	0.5 0.5			
CHINESE A1	LGGA**Y	1.0	World Lit (BR=Arts)		
CHINESE A2	LGGA**Y	1.0	World Lit (BR=Arts)		
CLASSICAL GREEK	GRK1**H GRK1**H	0.5 0.5	101 (BR=Arts) 102 (BR=Arts)	GRK101H1, GRK102H1	
COMPUTER SCIENCE	CSCA08H3 CSCA48H3 CSCA**H	0.5 0.5 0.5	(BR=Quant)		If grade is 5: CSCA08H3+CSCA**H If grade is 6 or 7: CSCA08H3+CSCA48H3
DESIGN TECHNOLOGY	No credit				
ECONOMICS	MGEA05H3 MGEA01H3	0.5 0.5		MGEA02H3, MGEA06H3	
English A: Language and Literature	ENGA**Y	1.0	(BR=Arts)	ENG100H1, ENG110Y1, ENG140Y1, ENG150Y1	
English A: Literature	ENGA**Y	1.0	(BR=Arts)	ENG100H1, ENG110Y1, ENG140Y1, ENG150Y1	
ENGLISH A1	ENGA**Y	1.0	(BR=Arts)	ENG100H1, ENG110Y1, ENG140Y1, ENG150Y1	
ENGLISH A2	ENGA**Y	1.0	(BR=Arts)	ENG100H1, ENG110Y1, ENG140Y1, ENG150Y1	
ENGLISH B	No credit				
FILM	HUMA**Y	1.0			
French A: Language and Literature	FREA**Y	1.0	(BR=Arts)	FREA01H3, FREA02H3	
French A: Literature	FREA**Y	1.0	(BR=Arts)	FREA01H3, FREA02H3	
FRENCH A1	FREA**Y	1.0	(BR=Arts)	FREA01H3, FREA02H3	
FRENCH A2	FREA**Y	1.0	(BR=Arts)	FREA01H3, FREA02H3	
FRENCH B	Under review				No credit is given to native speakers

University of Saskatchewan



International Baccalaureate (IB) Diploma Programme Recognition



Prestigious
Adventurous
Curious
Studios
Ambitious
Ingenious

The University of Saskatchewan (U of S)

is a leader in recognizing the achievements of students enrolled in the International Baccalaureate (IB) Diploma Programme worldwide. Our commitment to acknowledging the excellence of IB students is reflected in our admission and transfer credit policies and in the scholarships that we have created to invest in the education of high-achieving IB students.

University of Saskatchewan

International Baccalaureate Diploma

The International Baccalaureate (IB) program focuses on the development of cognitive skills, therefore, students learn how to learn, how to analyze and how to reach considered conclusions. Students with these skills are better equipped to meet the demands of university-level course work.

Self-Assessment Tool for IB Diploma Students

Enter your IB courses below along with your predicted/anticipated or final grades for your last year of study.

Course

Select one...

Grade

0

[Add course](#)

Optional, enter predicted/anticipated grades if known:

Theory of Knowledge

Letter Grade

▼

Extended Essay

Letter Grade

▼

Bonus Points

0

Calculate

Counselors: The Next Frontier

- Local Counselor Advisory Groups
- Counselor Breakfasts
- Good News Letter
 - 2012: December 20
 - 2013: March 11, April 1, May 7, October 28
- Counselor Networking Events
- Counselor E-list or Forum
 - Chatter

Good News Letter – Short and Sweet

Web version | Update preferences | Unsubscribe




TABLE OF CONTENTS

- IBA Good News Letter March 2013
- New IB Scholarship
- Standard Level Corner

IB College Counselors

IB College Counselors, if you would like to receive this document directly please email meghan.gannon@ibo.org

IBA Good News Letter March 2013

The Good News Letter is a new initiative put together by the IBA University Recognition team to provide information to you about improved and unknown policies universities have for IB students.

Please be sure to forward this information to those who would find it valuable.

New IB Scholarship

Midwestern State University has announced a new \$8,000 scholarship for students from Wichita Falls Independent School who graduate with an International Baccalaureate Diploma. [Link](#)

Standard Level Corner

This new section will appear in each Good News Letter and will highlight some of the many universities that give IB students credit for Standard Level (SL) exams.

University of Georgia – Athens

University of William and Mary

Webinars/Self Tutorials

- To address the problem of lack of information and too many places that need it, we will be developing various presentations that will be available on the IBO website
 - Transcripts 101
 - IB 101
 - How to Use an IB Recognition Policy to Recruit Students
 - Talking to Decision Makers at Universities

Interactive Workshops for Universities

In-Service Training for New Admissions Staff

- IB 101
- How are IB courses evaluated and assessed
- **Talking points for staff about the IB**

Workshop for Recognition Policy Makers

- A review of the current policy
- Best practice examples
- Suggestions for innovative approaches to policy
- IB oriented college Fairs
- Research on the effect of the IB programme
- Other IB material

Workshops for Administrative Staff

This would include groups such as registrars, financial aid and scholarships, residential life, etc. and would be tailored information to the specific group.

Workshop for Academic Leadership and/or Faculty

- Curricular concept
- Academic content and rigor
- Subject review cycle
- Research on the effect of the IB programme

College and University Relations Committee

- IBA Annual Regional Conference
 - 10 Reasons Why – A Poster Presentation
 - The IB in Flagship State Institutions – Beyond the Cognitive Factors
 - Organizing a Great IB College Fair
 - “Under Fire” - Recognition Issues and Concerns
- Other conference presentations
- Quarterly meetings
 - Phone conference
 - In person

Global Higher Education Projects

IB Student Registry

- This project aims to create an online IB Registry that will allow IB DP diploma students to enter academic and interest information into a scalable database accessible to universities and colleges.

IB Educator Network (IBEN) University Ambassador Project

- The project seeks to identify and train 15-20 members of the higher education community as IB ambassadors to present at conferences, to meet policy-makers, and to deliver relevant content at DP Recognition workshops.

Improving Services to Stakeholders

- Recognition web pages & searches online for policy statements
- Transcript migration project
- IB World Student Conferences

Higher Education Conference

Developing Student Potential Together: Higher Education and the IB

*Supporting students today,
so they can attain their dreams tomorrow*

Oct. 9-10, 2013, Stanford University, Palo Alto, Calif.

Heighten your 'student potential quotient' with the International Baccalaureate (IB) on campus at Stanford University, widely recognized as one of the world's leading research and teaching institutions, located in beautiful Palo Alto, California. During this very special event for college admissions officers, you will join your peers from top-tier institutions of higher learning to address the following timely topics:

- How to home in on qualified, college-ready, globally aware students as they seek the academic institution best suited to their undergraduate objectives.
- How to connect with students who understand and can articulate their talents and career interests—no matter where that quest takes them.
- How to adapt to the changing landscape of college admission and develop a pipeline for the most qualified students to your campus; new data analyses illuminate future pathways to success.

IB students outperformed A-level students at higher-education institutions in the UK: Specifically, IB students were more likely to achieve a first class honours award than A-level students in nearly all subject areas. —Higher Education Statistics Agency, UK (2011)

Research

<http://www.ibo.org/research/policy/programmevalidation/>

Postsecondary educational attainment of IB Diploma Programme Candidates from US high schools (2013)

Key Findings:

1. Postsecondary enrollment

Overall, 92% of the DP candidates graduating from US high schools in 2005 enrolled in US postsecondary institutions between May 2005 and November 2011 (Table 1). Seventy-seven percent enrolled directly from high school (before 31 January 2006).

2. Postsecondary destinations

Overall, DP candidates enrolled at 487 four-year institutions in 49 US states (all except North Dakota) and the District of Columbia immediately after graduation.

3. Retention rates at four-year institutions

The rate of first-year retention of DP students enrolled at four-year institutions was 98%, while the rate of two-year retention was 97% of initial enrollment. By comparison, the first-year retention rate at all U.S. four-year institutions was 75% (NCHEMS 2013).

4. Graduation rates at four-year institutions

Overall, 74% of the DP graduates who enrolled at four-year institutions graduated within four years. These results account for student transfers across institutions. By comparison, at the national level, 38% of the students who enrolled full-time at four-year institutions in 2004 graduated within four years (Knapp, Kelly-Reid, Ginder 2012a).

Postsecondary educational attainment of IB Diploma Programme Candidates from US high schools (2013)

Table 1. Overall and immediate enrollment rates

	All		Diploma result				Gender			
			Diploma received		Diploma not received		Female		Male	
	N	Percent	N	Percent	N	Percent	N	Percent	N	Percent
Total DP candidates, 2005	11,273	100%	8,443	100%	2,830	100%	6,585	100%	4,688	100%
Overall enrollment between May 2005 and November 2011*	10,320	92%	NA	NA	NA	NA	NA	NA	NA	NA
Immediate enrollment (i.e., by January 31, 2006)	8,679	77%	6,481	77%	2,198	78%	5,114	78%	3,565	76%

*Includes frequencies of available data and blocked records

IB students' post-secondary enrollment and performance in the US (from high schools within the US and outside) (2011)

Center for Education Policy, SRI International 2011

Study Design:

- To better understand the post-secondary destinations and outcomes of IB students

Data sources

- National Student Clearinghouse (NSC)
- Integrated Postsecondary Education Data System (IPEDS)
- Carnegie Classification of Institutions of Higher Education
- IB DP student data

Samples

- US high schools: 11,653 IB certificate/12,834 diploma
- High schools outside the US: 1,919 IB certificate/diploma (75%)

IB students' post-secondary enrollment and performance in the US (from high schools within the US and outside) (2011)

- Key Findings: High Schools Within the US

Enrollment patterns

- 71% of all IB students enrolled in full-time post-secondary institutions (the US average is 56%).
- The majority (~70%) attended selective colleges and universities (more so for full diploma candidates).

Graduation patterns

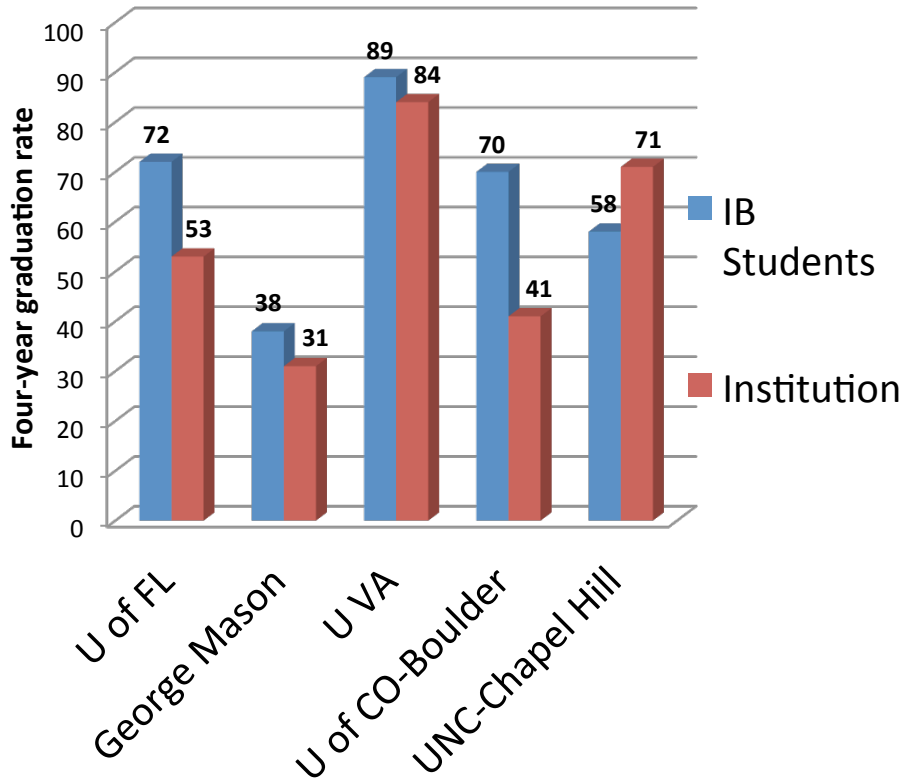
- IB students' four-year and six-year graduation rates (64% and 81% respectively) were higher than the national averages (36% and 57% respectively).
- The graduation rates were also higher than institutional averages in many cases.

IB students' post-secondary enrollment and performance in the US (from high schools within the US and outside) (2011)

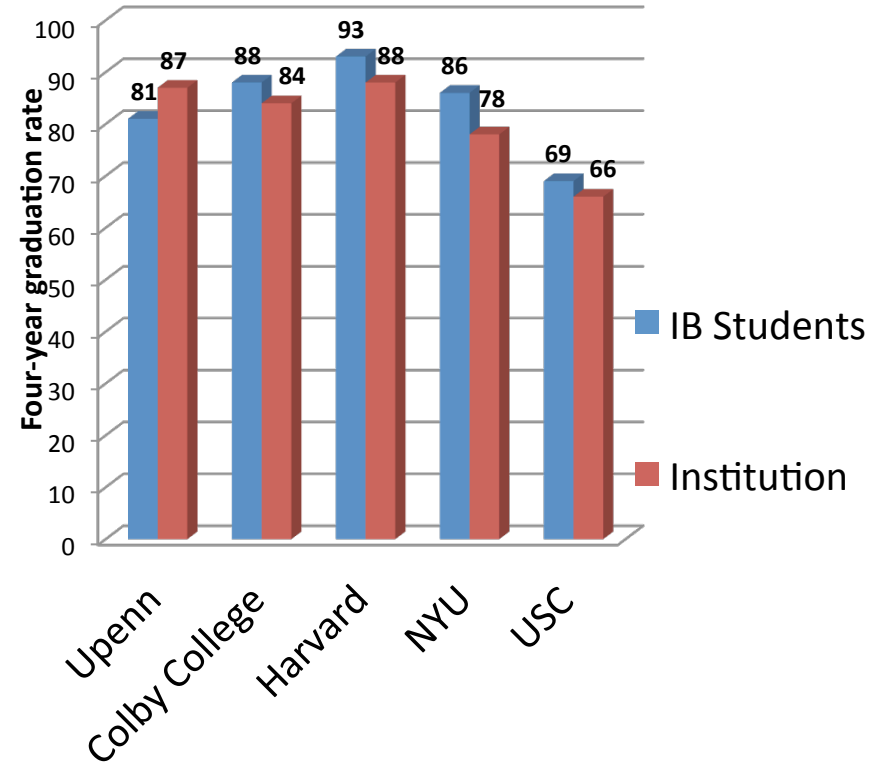
- Key Findings: High Schools Outside the US
 - High-achieving group:
 - 75% full diploma candidates; Avg 5.2 IB exams; Mean score 5.4 (global mean ~4.7); 60% of full diploma candidates scored 6 or higher on 3 or more IB exams.
 - Majority (~84%) enrolled in selective four-year institutions.
 - Very high university graduation rates and, in the majority of cases, higher than institutional rates.
 - 75% and 85% of diploma recipients graduated within four and six years respectively.
 - 55% and 80% of certificate candidates graduated within four and six years respectively.
 - IB students' graduation rates were the same or higher at 8 out of 13 institutions with institution-wide graduation rates of at least 80%.

IB students' post-secondary enrollment and performance in the US (from high schools within the US and outside) (2011)

Four-year Graduation Rates at Top US Destinations



Top five destinations for US students



Top five destinations for international students

Resources for Universities

- **GENERAL INFORMATION**

- International Baccalaureate Organization public website: <http://www.ibo.org/>
- Interpreting IB Transcripts: <http://www.ibo.org/diploma/recognition/guide/slides.cfm>
- Diploma Validation Studies: <http://www.ibo.org/research/policy/programmevalidation/diploma/>
- Curriculum Briefs: <http://www.ibo.org/recognition/resourcesanddocumentlibrary/moreresources/index.cfm>

- **RECOGNITION POLICY**

- IBIS Account: <http://www.ibo.org/university-registration/>
- Establishing a Policy: <http://www.ibo.org/recognition/resources/>

- **CONTACTS**

- Regional Associations: <http://www.ibo.org/iba/associations/>
- IB Answers: <https://ibanswers.ibo.org/>
- Marie Vivas, IBA University Relations Manager
 - 301.202.3178
 - Marie.Vivas@ibo.org
- Maya Grodman, IBA University Relations Administrator
 - 301.202.3177
 - Maya.Grodman@ibo.org

UK Recognition and University Admissions

AEM Conference Day

Julian Metcalf

UK Associate Manager (IB)

University Admissions Manager (IBSCA)

October, 2013

Julian.metcalf@ibo.org

Julian Metcalf

UK Associate Manager

IBSCA University Liaison Officer

Assistant Head Teacher (Post-16),
Dartford Grammar School

English Teacher

Deputy Head Teacher,
The Skinners' School

IB Diploma graduate!





Quick Quiz!

- 127, 284 IB Diploma students applied to UCL in 2012
- 10, 488 Ratio of applicants to places for King's Medical School
- 1,465 % of applicants to UK universities holding A levels
- 6:1 Students who achieved A*A*A* that Cambridge rejected
- 47 Students who achieved 45 IB Diploma points in May 2013
- 1,766 IB Diploma exam candidates in May 2013
- 144 million students at university in non-domicile country
- 12:1 % UK university acceptance rate of IB students in 2012
- 87 IB applicants to UK universities in 2012
- 3.8 Total points score required by King's College, London
- 35 Ratio of applicants to places for Oxford

Agenda

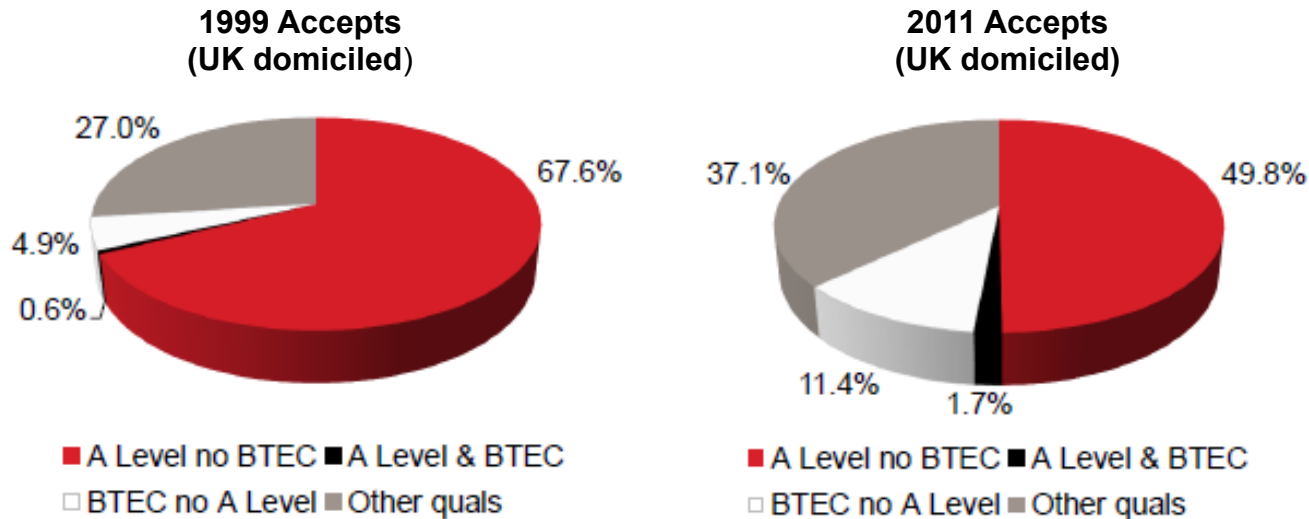
- Update on university work
- UK university admissions trends
- IB student destinations
- Further support available

Recognition for fair offers

- UK University Liaison and accreditation roles in UK
- Research : For example HESA study, Fischer Family Trust, commissioned data mining from UCAS,
- Dedicated literature for HEIs DP, MYP IBCC
- Dedicated IB section of website- area for HEIs-login to view course details-active approach to policy gathering
- Updates sent to Universities,
- Orientation sessions for admissions tutors
- Regular Institution F2F meetings
- Regular engagement with bodies: UCAS, Russell Group, HEFCE, DfE
- Recognition Ambassadors
- You, your students

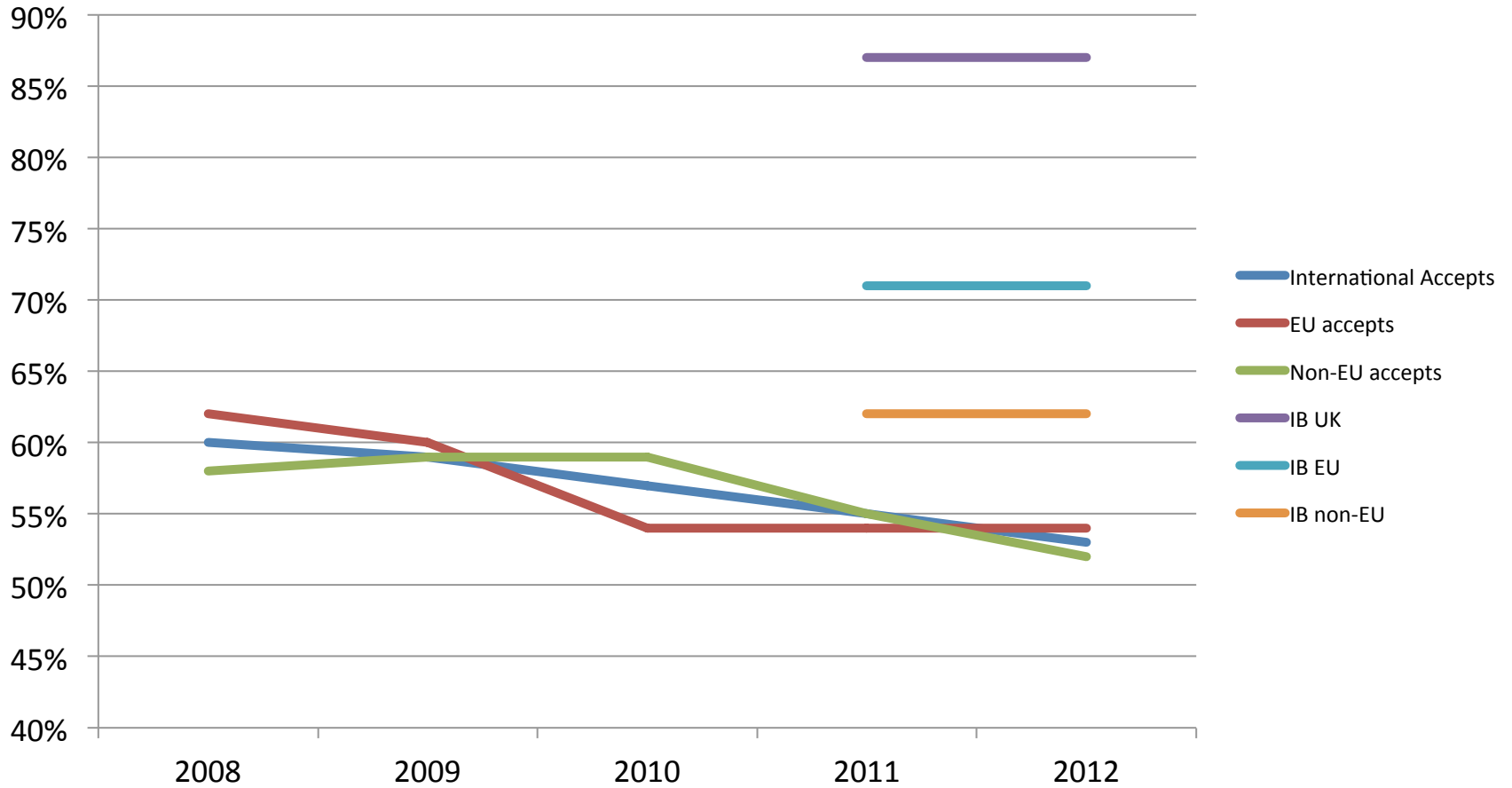
UK HEI Admissions

- 1963: 80, 000 applicants; 45.7% acceptance rate
- 2011: 700, 161 applicants; 70.3% acceptance rate
- Admissions staff face a multitude of qualifications!



• The trend is towards centralised admissions

Accepts



Offer Rate

'Is it easiest to get an offer with IB or A'levels...?'

2010	A levels 69%	IB 70%	All quals 60%
2011	A levels 68%	IB 69%	All quals 57%
2012	A levels 68%	IB 72%	All quals 57%



'Is it easiest to get accepted with IB or A levels...?'

UK Domicile Only...

All quals	Offer rate	57%	Acceptance rate	70%
A levels	Offer rate	68%	Acceptance rate	82%
IB	Offer rate	72%	Acceptance rate	87%

Competitive HEIs



Number of IB students made offers by year

• 1999/0	282	• 2006/7	545
• 2000/1	260	• 2007/8	661
• 2001/2	261	• 2008/9	718
• 2002/3	376	• 2009/0	858
• 2003/4	335	• 2010/1	664
• 2004/5	391	• 2011/2	1181
• 2005/6	507	• 2012/3	1473

Top 25 most popular for IB applications in 2012...

University College London	1,766
The University of Edinburgh	1,602
The University of Warwick	1,496
King's College London	1,226
University of Exeter	1,218
University of Bristol	1,206
Durham University	1,046
London School of Economics	1,026
The University of Nottingham	1,023
The University of Manchester	1,015
University of Southampton	941
Oxford University	893
University of Leeds	848
University of Cambridge	795
The University of York	775
The University of Birmingham	770
The University of Kent	757
Queen Mary, University of London	751
University of Bath	725
University of St Andrews	719
Imperial College London	698
The University of Sheffield	628
City University	526
Cardiff University	525
University of East Anglia	505

Oxbridge...



- 1000 IB applicants out of 17, 000 (5.8%)
- 250 IB offers made (out of 3, 500) (7.1%)
- IB offers: 38-40 points; 766 HL
- Admissions test & interview
- Perception of 'A*AA v 42+ points'
- Remember, for 2011 admissions:

A*A*A*	1465 unsuccessful applicants	(1544 successful)
A*A*A	1560 unsuccessful applicants	(593 successful)
A*A A	1756 unsuccessful applicants	(368 successful)
- Reality: 2.7 A* grades
- Interview
- Give indicator of Year 12 performance
- ***Subject passion and intellectual curiosity***

Institutions Accepting IB Courses (2011-12)

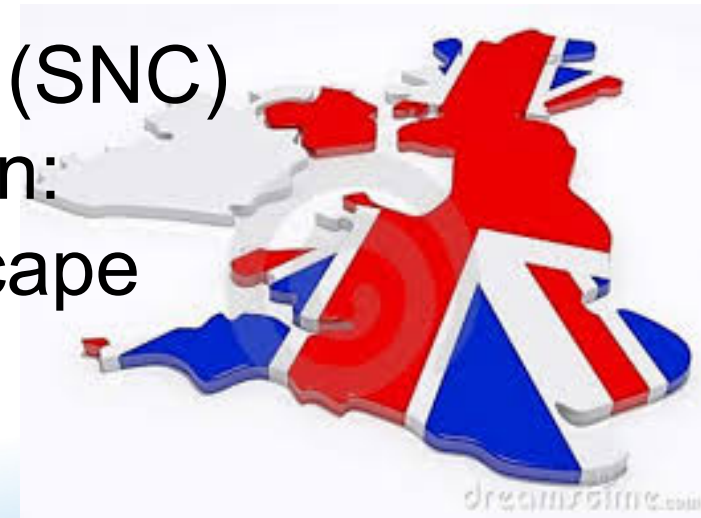
- Abertay Dundee
- Angelia Ruskin
- Bangor
- Bath Spa
- Bedfordshire
- Birmingham City
- Bolton
- Bradford
- Brighton
- Bucks New University
- Canterbury Christ Church
- Central Lancashire
- Chester
- City
- Coventry
- Cumbria
- De Montford
- Derby
- East London
- Edge Hill
- Edinburgh Napier
- Glamorgan
- Glasgow Caledonian
- Gloucestershire
- Glyndwr
- Greenwich
- Hertfordshire
- Hull
- Kent
- Kingston
- Lampeter
- Leeds Metropolitan
- Leeds Trinity
- Lincoln
- Liverpool John Moores
- Liverpool Hope
- London Metropolitan
- London South Bank
- Manchester Metropolitan
- Marjon
- Middlesex
- Newman University College
- Newport
- Northampton
- Northumbria
- Nottingham Trent
- Oxford Brookes
- Portsmouth
- Queen Margaret
- Queen Mary's
- Roehampton
- Royal Holloway
- Salford
- Sheffield Hallam
- Southampton Solent
- Staffordshire University
- St Mary's UC
- Worcester

Student Number Controls

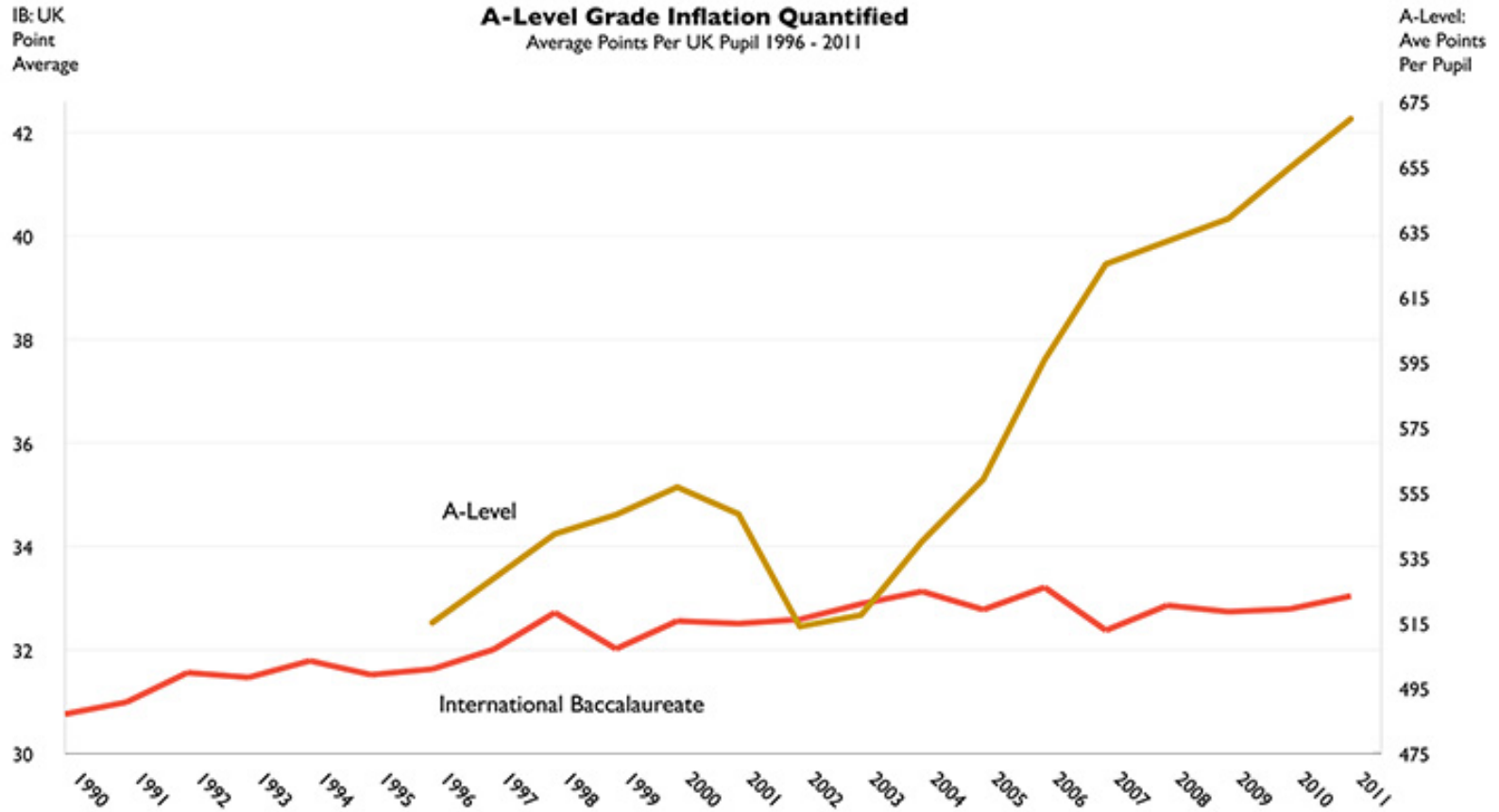
- Government policy to ‘free up student movement’ for ‘high performing’ (EU funded) students
- HEIs free to recruit as many ‘ABB’/34+ IB students as they wish (from the UK and EU)
- No caps on non-EU students (ie non-HEFCE funded)
- Number controls exist still for UK/EU IB students who:
 - Get less than 34 points
 - Are studying the IBCC or IB Courses
 - Are studying other European or International courses
- My advice: don’t worry about this! (that’s not your job!)

UK Context

- 324 HEIs (via UCAS) and over 40, 000 courses
- We're obsessed with data!
- Centralised application system (UCAS) but universities control their own entry requirements and make decisions independently
- We like to complicate things (SNC)
- The IB Diploma is well known:
 - Stable in uncertain landscape
 - No 'grade inflation'



Grade Inflation



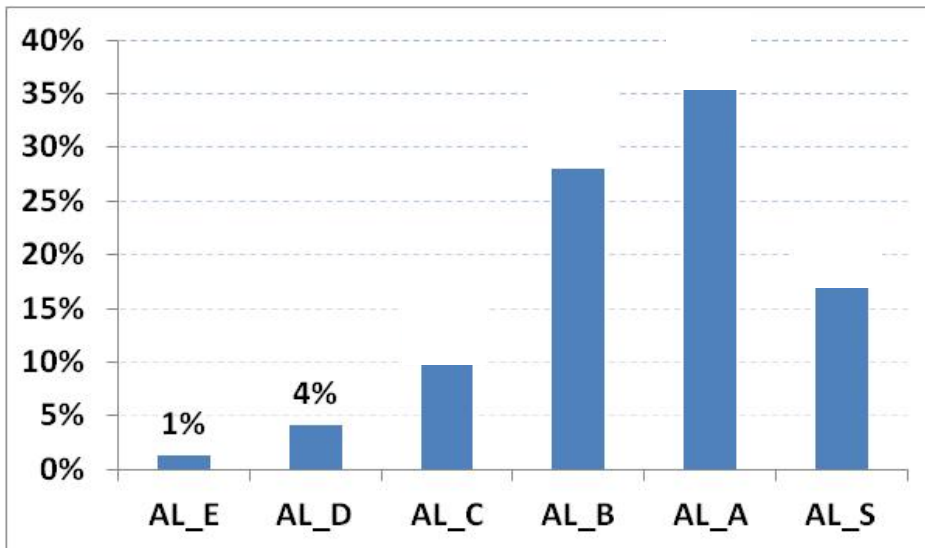
Other updates

- Impact of tuition fees
- UCAS Tariff: Extended Essay
- UCAS Tariff Review
- IBCC
 - UCAS Apply, UCAS Quals inf,
 - Guide for schools
 - Employers' Guide
- MYP
- DfE Performance Measures
- Funding in the UK State Sector
- Fischer Family Trust research on equivalence

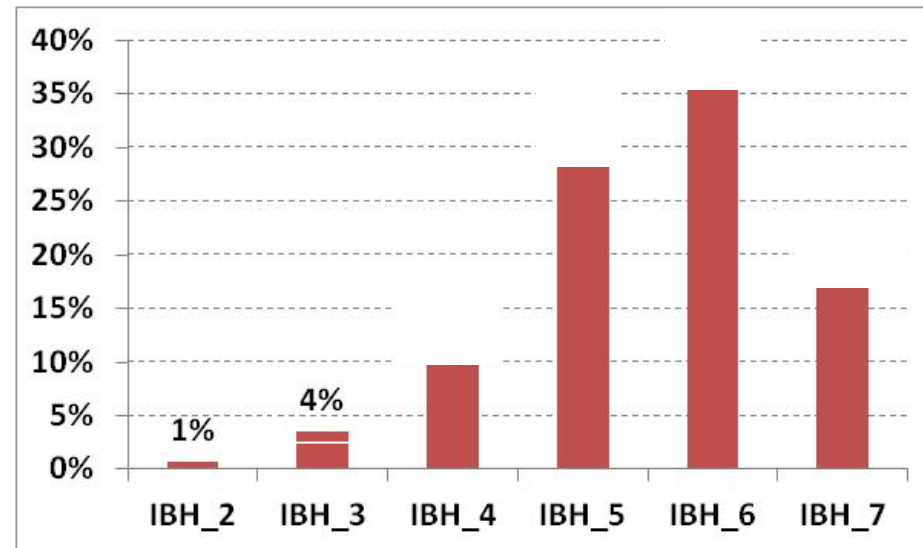
Comparing A2 and IB HL

- For students in the top 10% at GCSE:

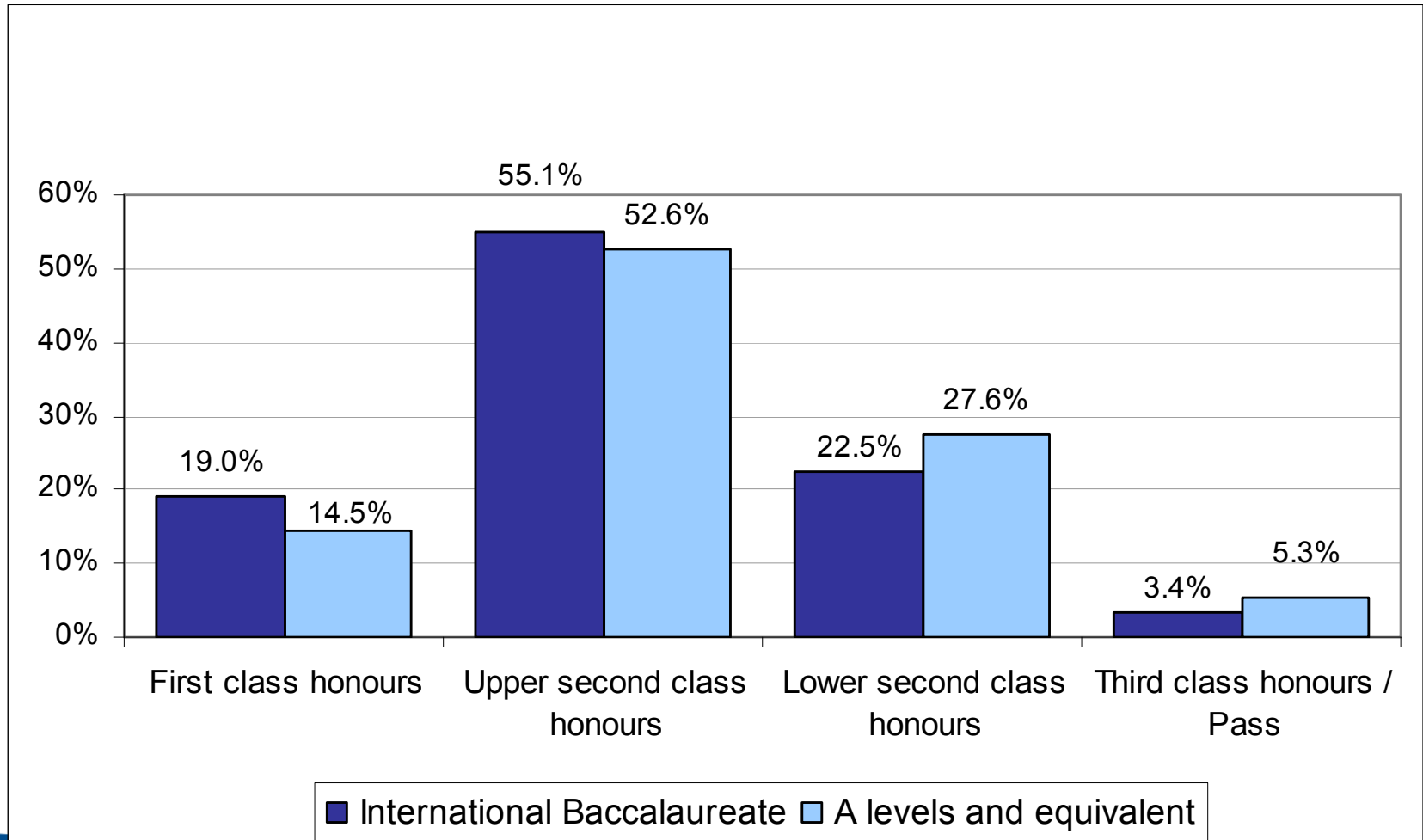
The distribution of grades achieved at A2



The distribution of grades achieved at IB HL



Full-time first degree qualifiers by class of degree



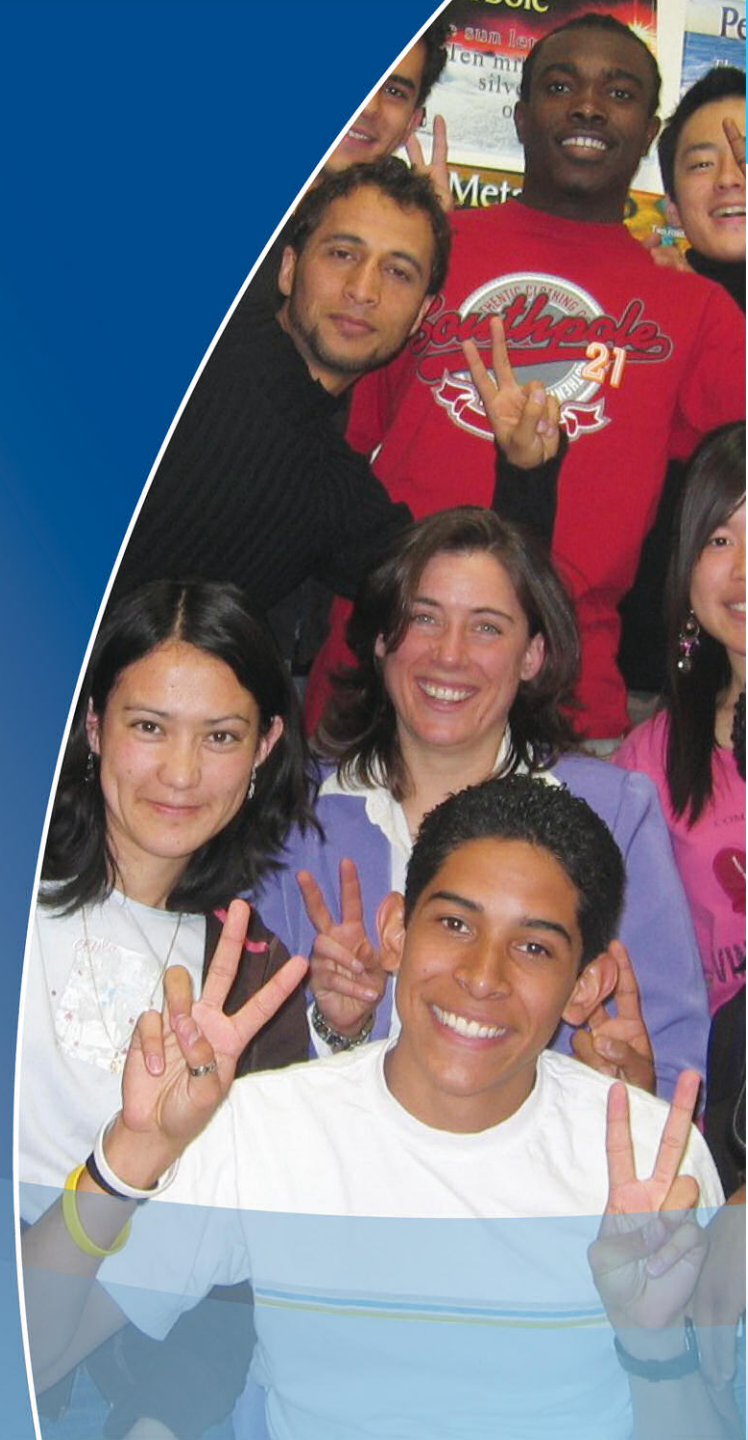
Where you can find help

- UK Manager and UK University liaison
Julian Metcalf julian.metcalf@ibo.org
- Accreditation of courses and qualifications in UK
Angela Hopkins angela.hopkins@ibo.org
- IBSCA-IB Schools and Colleges Association
www.ibsca.org.uk
- The Hague Recognition Team
Eleni Kanava eleni.kanava@ibo.org
- IB has representation Africa, Middle East, Spain

IB Recognition in Australia



International
Baccalaureate®



Admissions

- Changes by state
- Assumes that a student has achieved the full Diploma
- Based on marks/grades only
- International students generally apply directly to the university of their choice
- Check university website for:
 - Location (state)
 - Entry requirements including prerequisites
 - The method of application -- direct application or through a Tertiary Admissions Centre eg. UAC. Application deadline by end of September

Admission requirements

University Name	Minimum score for entry
Australian Catholic University	24 points
Australian National University	30 points
Bond University	24 points
Deakin University	24 points
Flinders University	26 points
Griffith University	26 points
La Trobe University	24 points
Macquarie University	27 points
Monash University	25 points
Queensland University of Technology	26 points
Royal Melbourne Institute of Technology (RMIT)	24 points
University of Adelaide	24 points
University of Ballarat	24 points
University of Canberra	24 points
University of Melbourne	24 points
University of New South Wales	24 points
University of Newcastle	25 points
University of Notre Dame	24 points
University of Queensland	24 points
University of South Australia	24 points
University of Southern Queensland	24 points
University of Sydney	24 points
University of Tasmania	24 points
University of Technology Sydney	24 points
University of the Sunshine Coast	24 points
University of Western Australia	24 points
University of Western Sydney	24 points
University of Wollongong	24 points

- Most universities require a minimum of 24 points – varies with courses
- English requirements and Credits – to check with the university as also varies
- IELTS/TOEFL/CAE is a visa requirement.

Main things to know

- Australian universities use differing mechanisms for entry depending on whether the student is a domestic (including New Zealand citizen) or international student. Some universities have direct application to university for international students and some use a tertiary admissions centre.
- Check the university website carefully for the information

Information summary

Each of these elements are true for the vast majority of situations. However, universities do sometimes make exceptions so always check with the university for the correct information.

Recognition element	Status
Use of predicted grades	No: universities do not use predicted grades for entry for domestic students. Entry is based on DP score or the conversion of the score to the local entry system ATAR. International students should check with the university.
DP Courses	No: universities do not except DP courses for domestic students and require the full Diploma. There have been few instances of universities accepting DP courses for international students.
English requirements	Depends on the university. Most require IELTS but some are starting to change.
Credits	Very few formalised methods for this to occur but it does happen on an ad hoc basis. Always check with the university.

Regulatory changes

- Australia has recently had a change in federal government as a result of the general elections. As such there is a reasonable potential for changes to:
 - Visa requirements for international students
 - Funding to government departments involved in education
 - Funding models for schools
- It should be noted that each state has regulatory control over their educational system and significant differences remain between the states.

Stefanie.leong@ibo.org

Australia, New Zealand

Paul.Campbell@ibo.org

America & Canada

Julian.Metcalf@ibo.org

UK